

ISTITUTO NAZIONALE DELLA PREVIDENZA SOCIALE

SEDE REGIONALE PER LA SICILIA

UFFICIO TECNICO - EDILIZIO



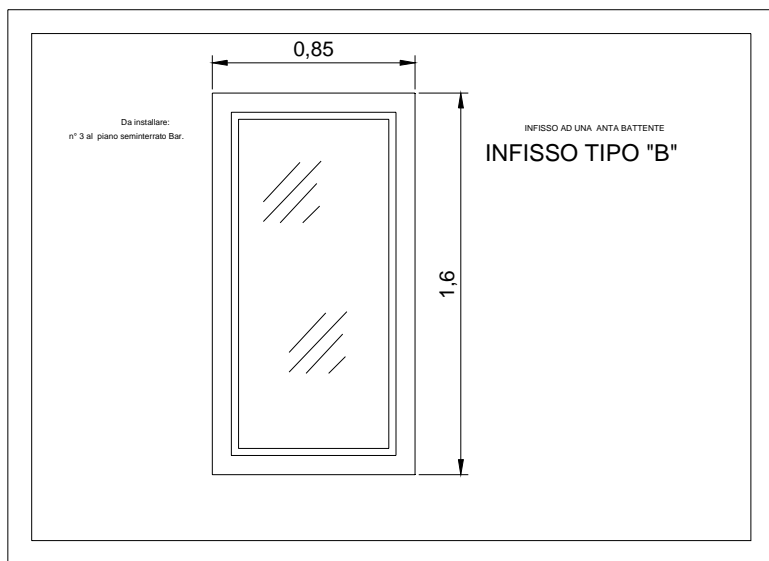
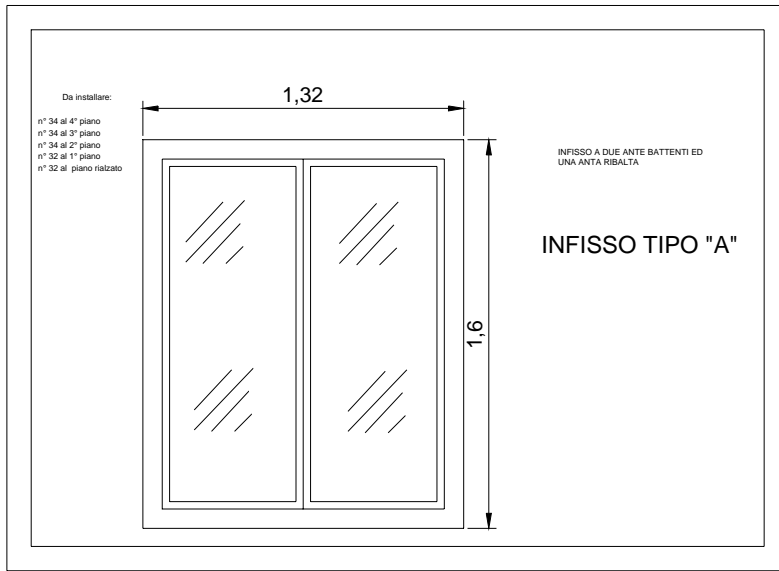
**TAVOLA "C"
DISEGNI PARTICOLARI COSTRUTTIVI.**

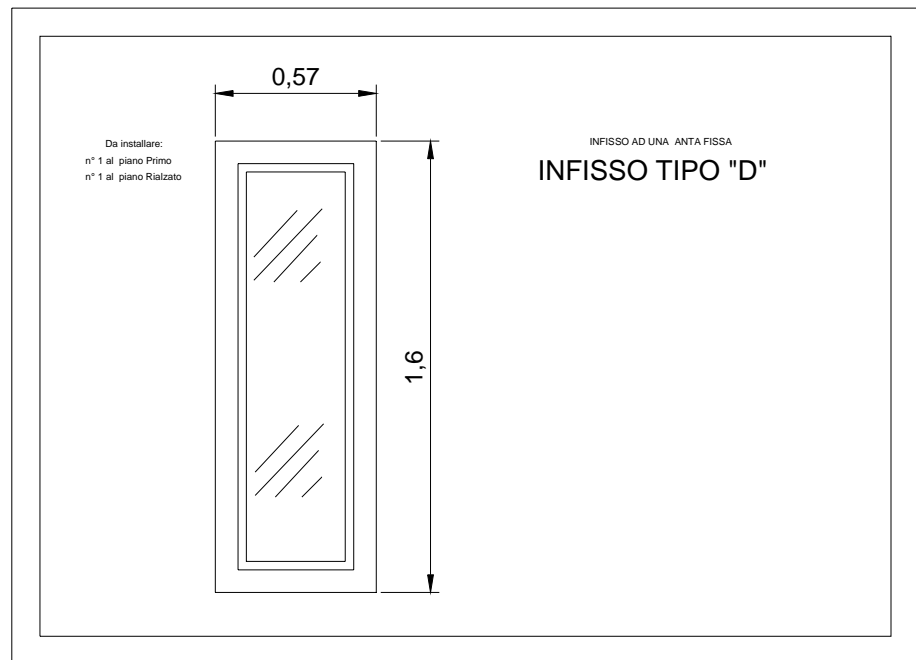
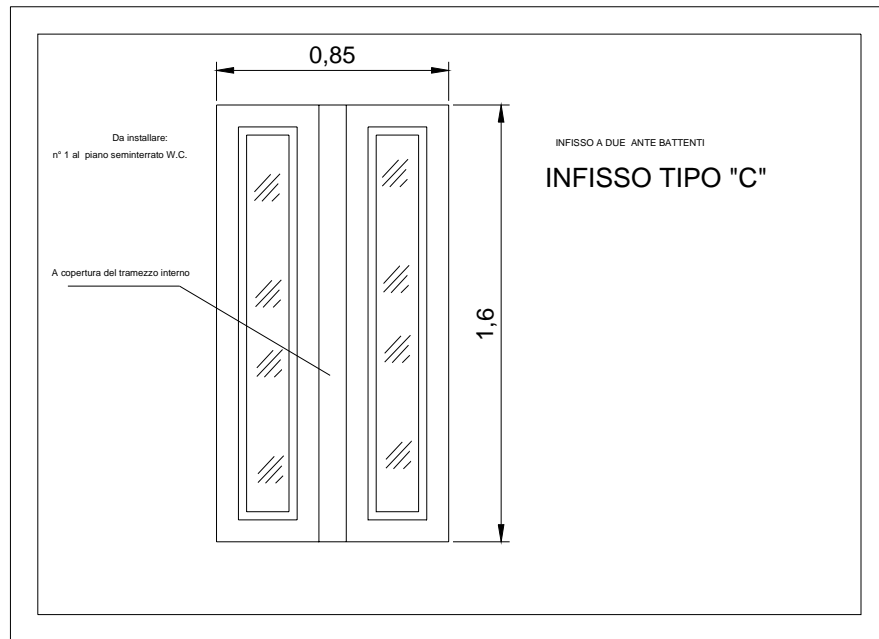
SEDE INPS DI ENNA. Viale Diaz,23

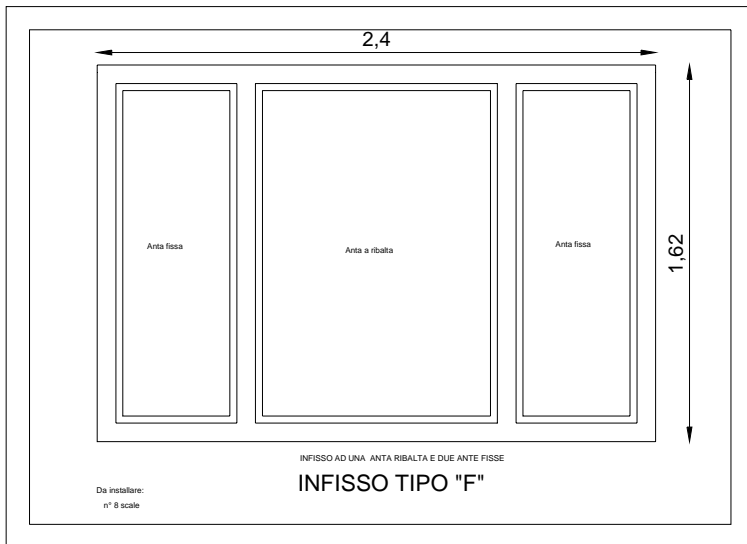
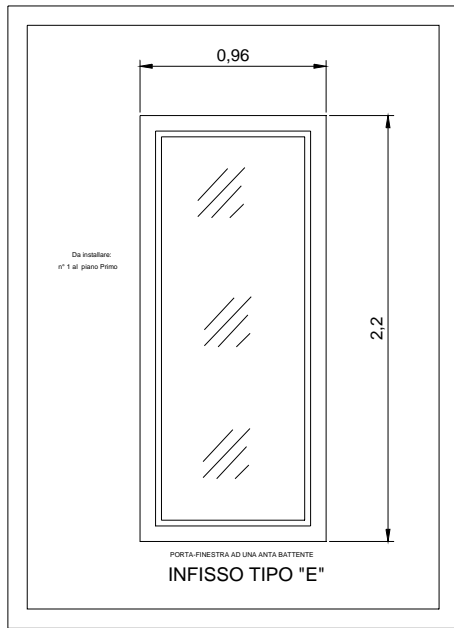
OGGETTO: LAVORI DI FORNITURA E COLLOCAZIONE INFISSI ESTERNI IN LEGNO/ALLUMINIO.

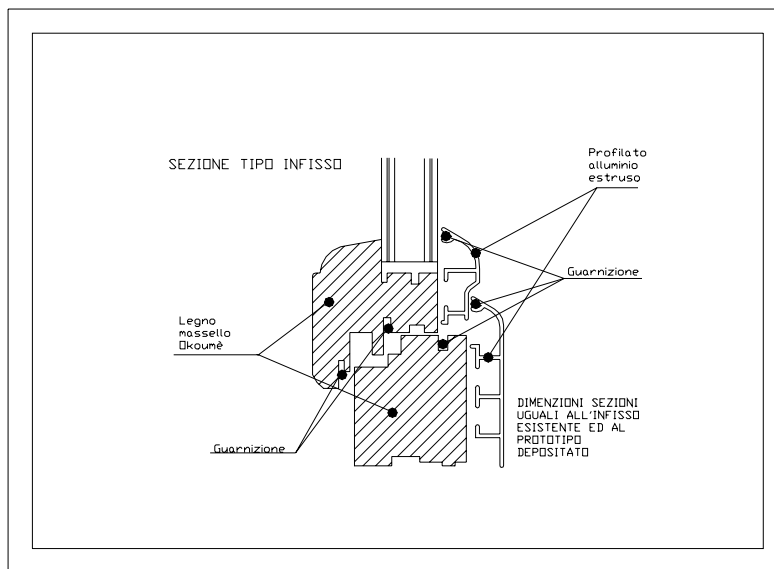
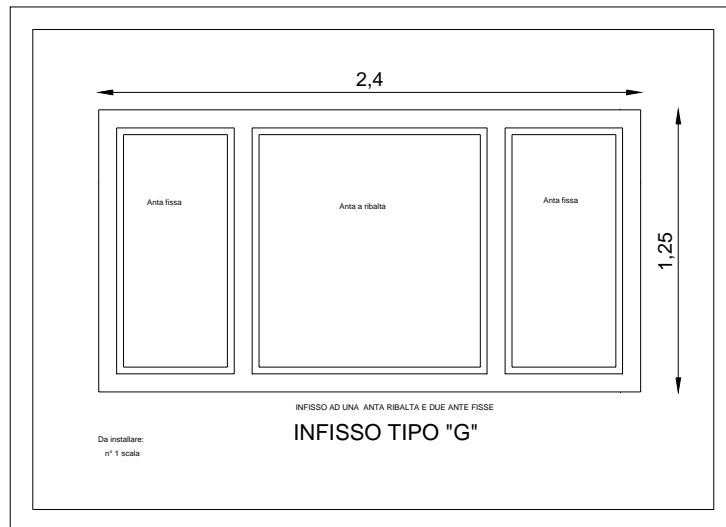
PROGETTISTA: Geom. Salvatore FARINE

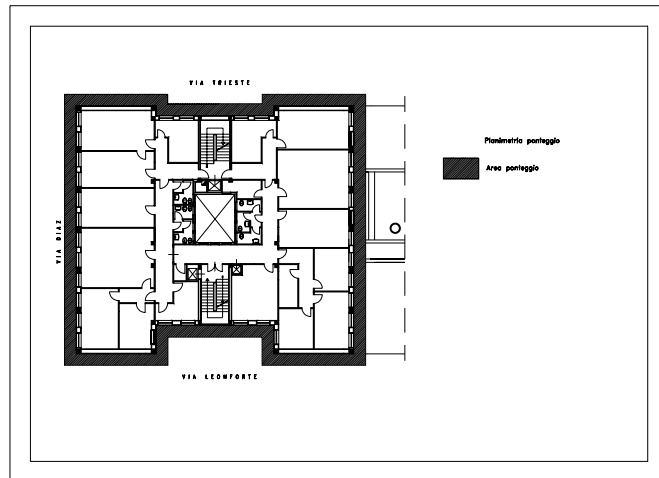
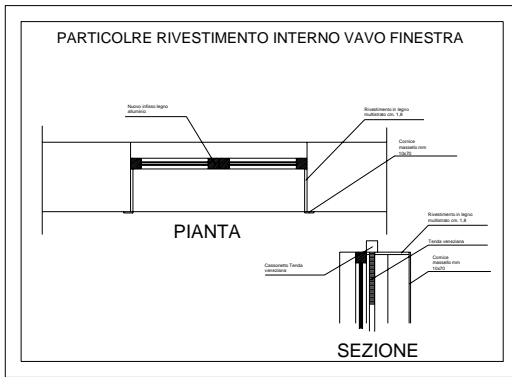
PALERMO











Planimetrie indicante le zone di intervento

