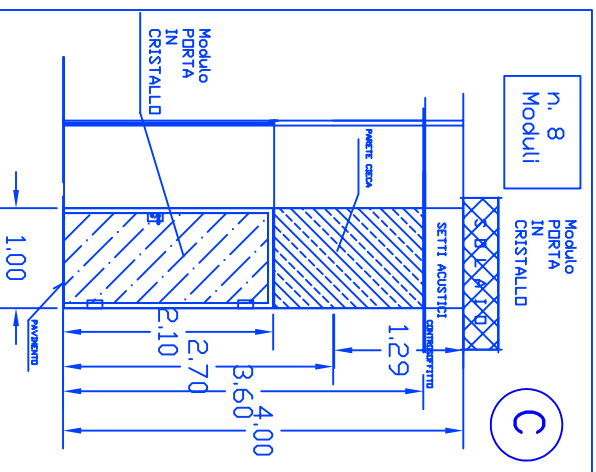
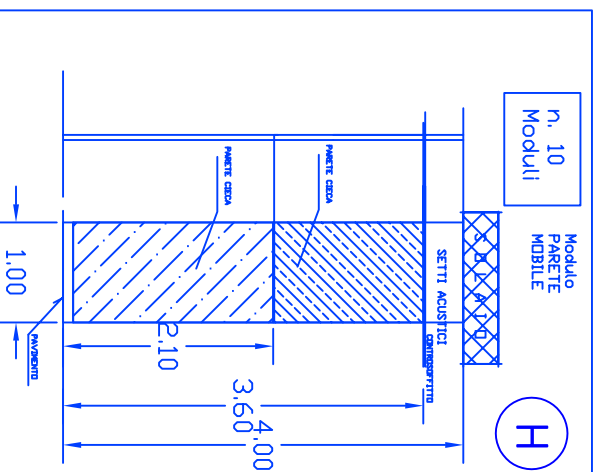
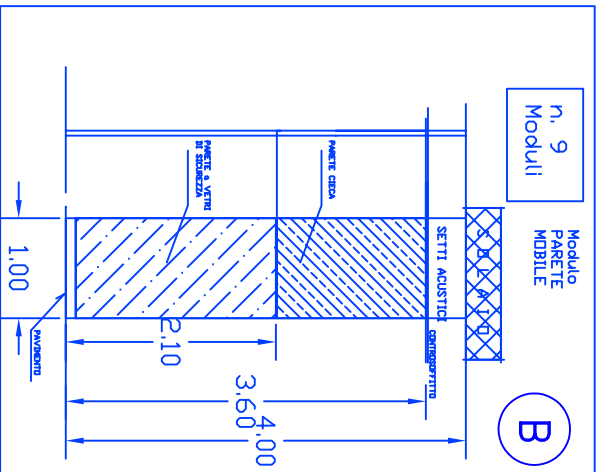
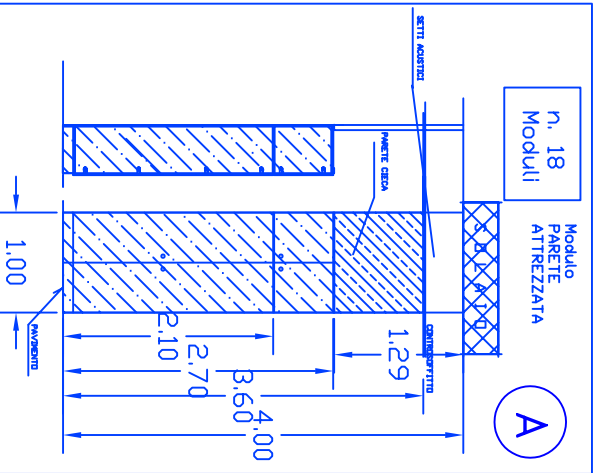
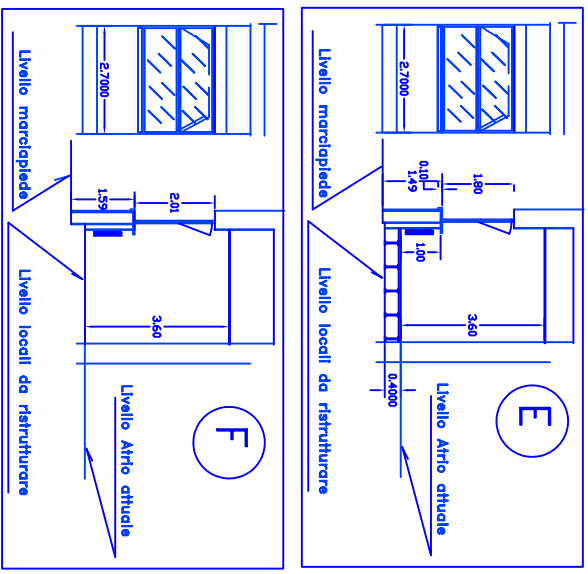
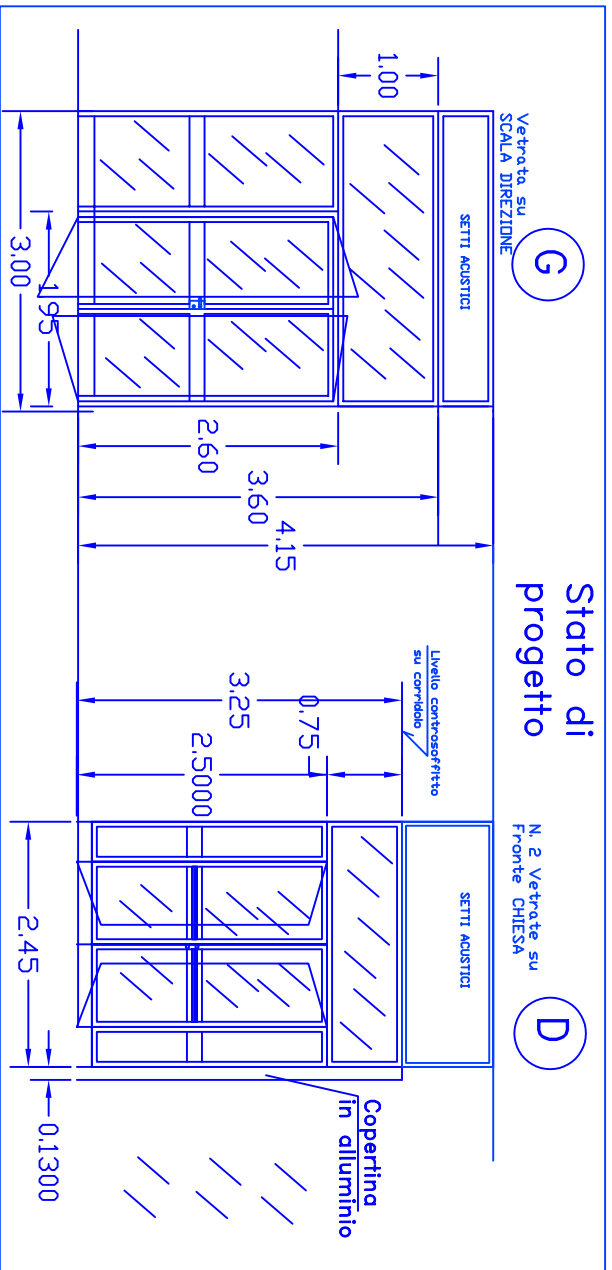


Struttura su
SCALA DIREZIONE

N. 2 Vetrate su
Fronte CHIESA

Stato di progetto



Progettato da	Arch. Bruno Colantonio	TAV. 7
Approvato da		Data
		settembre 2009
		Scala
SEDE REGIONALE FRIULI-VENEZIA GIULIA Via C. Battisti, 10/D - 34125 TRIESTE		Direzione Provinciale INPS-GORIZIA
AREA PROFESSIONALE TECNICO EDILIZIA		1° e 2° lotto - Abaco Inffissi