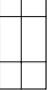







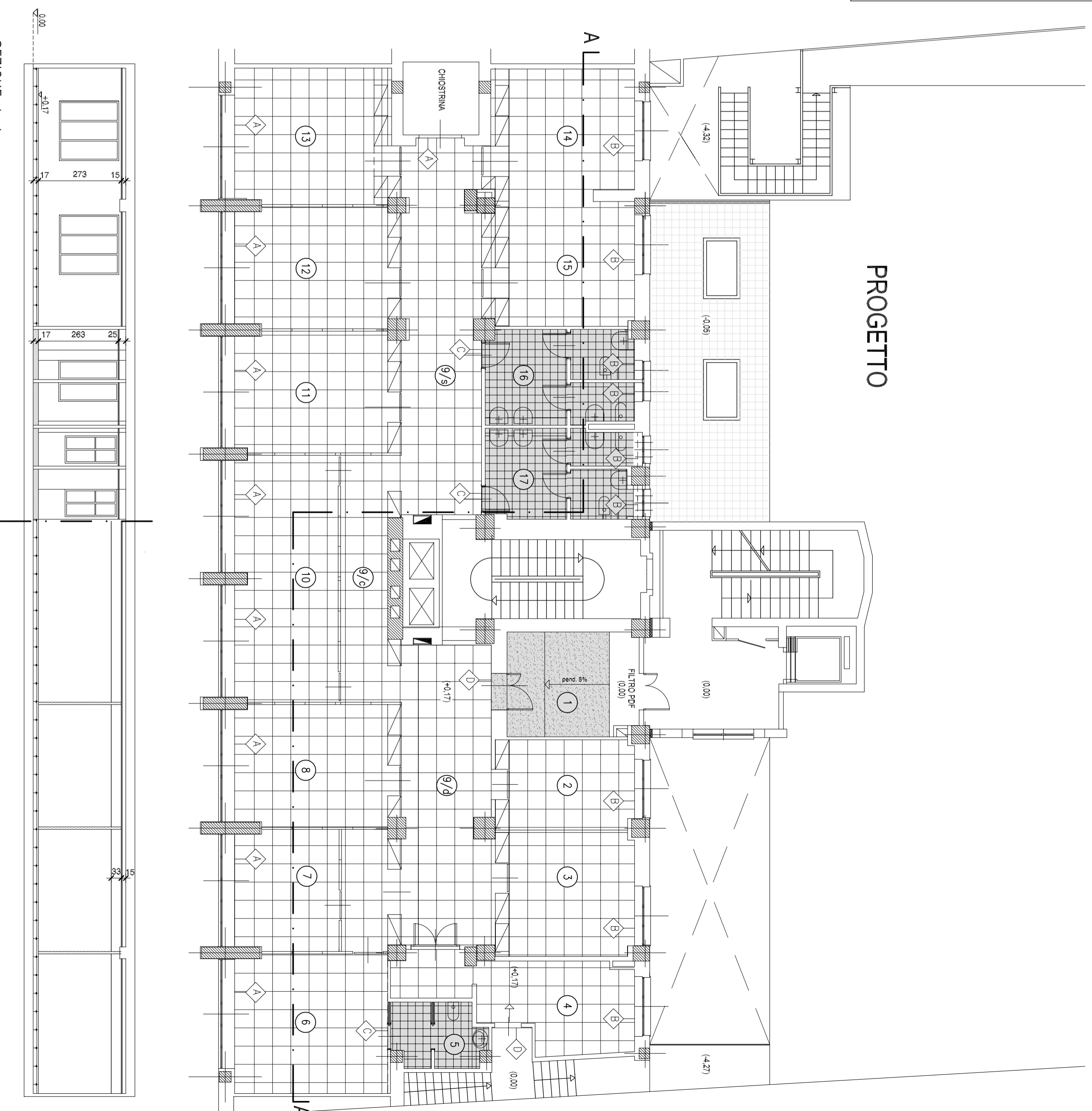


PROGETTO

- LEGENDA**
- (+...)
 QUOTA PAVIMENTO FINITO
 - 
 PAVIMENTO SOPRAELEVATO
 - 
 PAVIMENTO E RIVESTIMENTO IN
 PASTRELLE SMALTATE DI GRES
 - 
 PAVIMENTO IN LASTRE DI SIENITE GRIGIA
 - 
 MASSETTO ALLEGGERITO
 CON ARGILLA ESPANSA
 - 
 SOGLIE IN LASTRE DI PIETRA AURISINA
 - 
 SOGLIE IN LASTRE DI REPEN CHIARO
 - 
 SOGLIE IN LASTRE DI PIETRA LAVICA
 - 
 SOGLIE IN LASTRE DI SIENITE GRIGIA



SEZIONE A-A

