




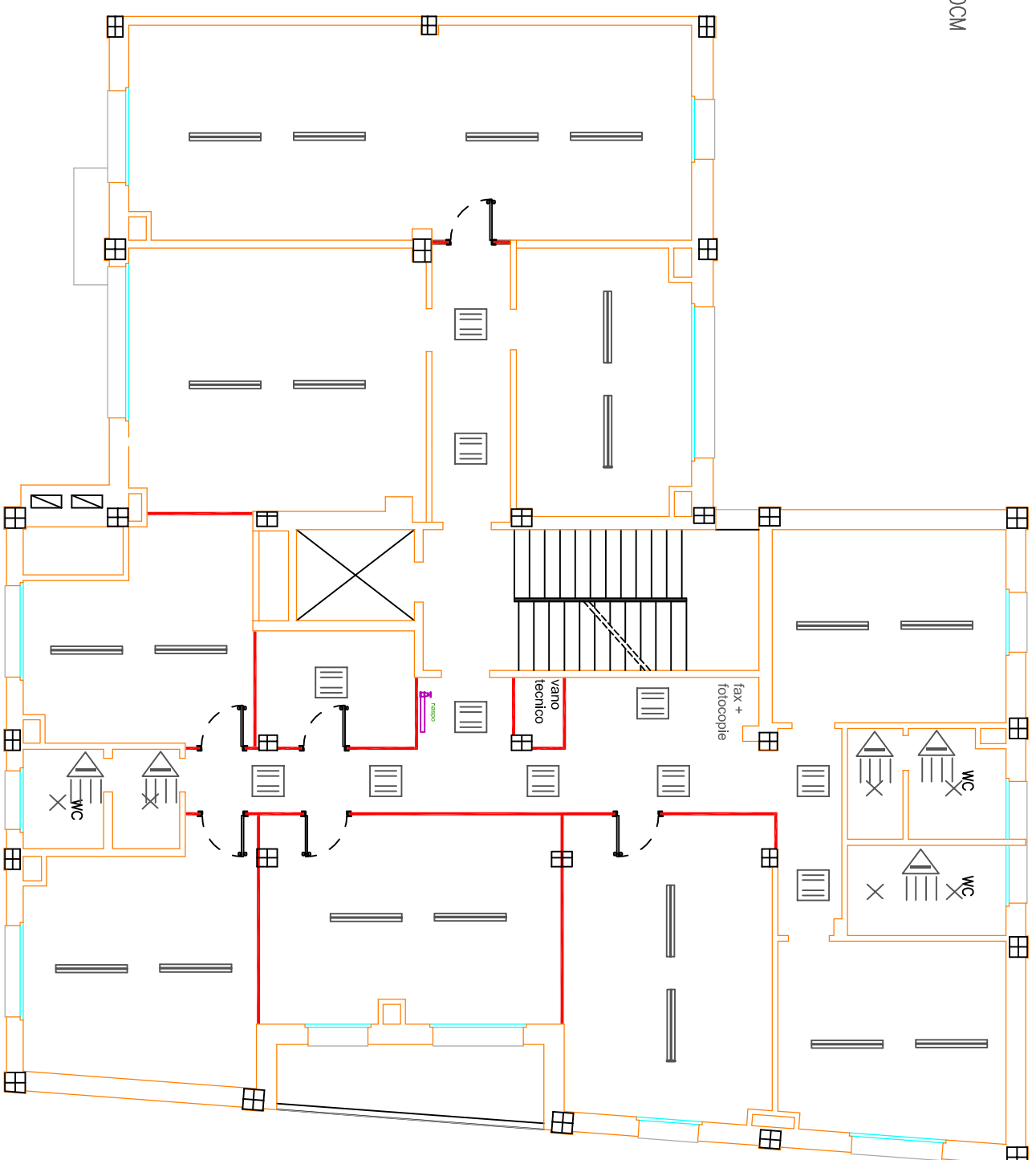


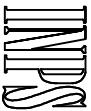

LEGENDA

-  PLAFONIERA 1X36W IP 65 POLICARBONATO
-  PLAFONIERA 4X18W DA INCASSO SU CONTROSOFFITTO 60X60CM
-  PLAFONIERA 2X36W A SOFFITTO
-  PLAFONIERA A SOFFITTO BAGNI
-  interruttore infrarossi



VIALE PORTA ADIGE

2

 IMPS ISTITUTO NAZIONALE PREVIDENZA SOCIALE		Sede Regionale Veneto Servizio Tecnico Edilizio VENEZIA	
Sede I.N.P.S. DI ROVIGO			
Objetto: Opere da elettricista IMPIANTI ILLUMINAZIONE			
Data: AGOSTO 2010		COD. 06 RO 00	
SCALA		TAVOLA N.	
REVISIONE 0		 Il Progettista p.l. G. Cavallaro	
PIANTA PIANO SECONDO - Stato di progetto			