




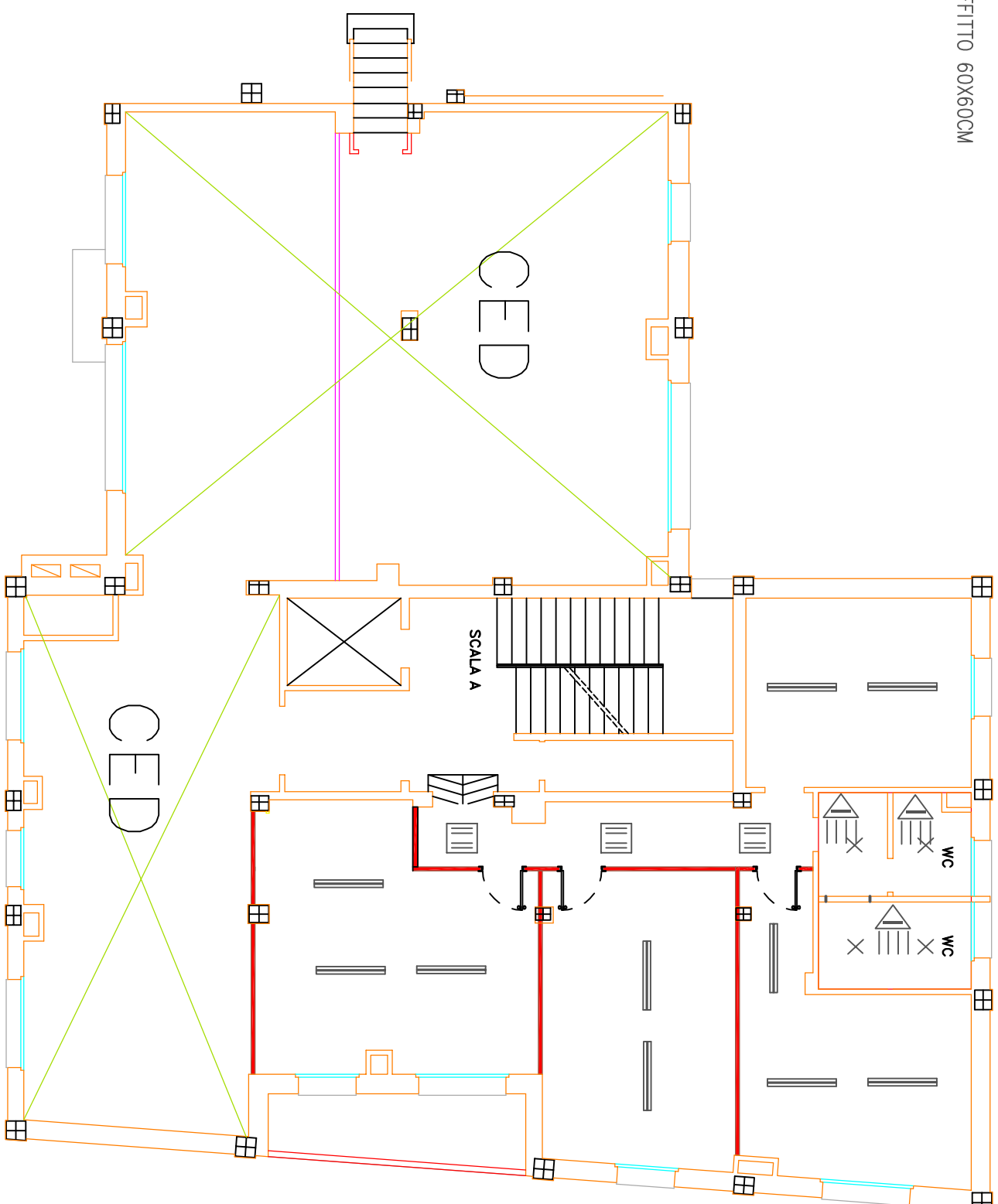
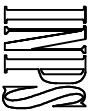
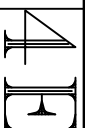


LEGENDA

-  PLAFONIERA 1X36W IP 65 POLICARBONATO
-  PLAFONIERA 4X18W DA INCASSO SU CONTROSOFFITTO 60X60CM
-  PLAFONIERA 2X36W A SOFFITTO
-  PLAFONIERA A SOFFITTO BAGNI
-  interruttore infrarossi



 ISTITUTO NAZIONALE PREVIDENZA SOCIALE		Sede Regionale Veneto Servizio Tecnico Edilizio VENEZIA	
		Sede I.N.P.S. DI ROVIGO	
Oggetto: Opere da elettricista IMPIANTI ILLUMINAZIONE			
Data: AGOSTO 2010		COD. 06 RO 00	
SCALA		TAVOLA N.	
REVISIONE 0			
PIANTA PIANO QUARTO - Stato di progetto		Il Progettista p.l. G. Cavallaro	

VIALE PORTA ADIGE