

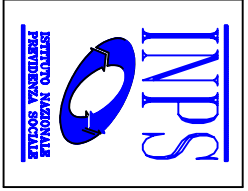
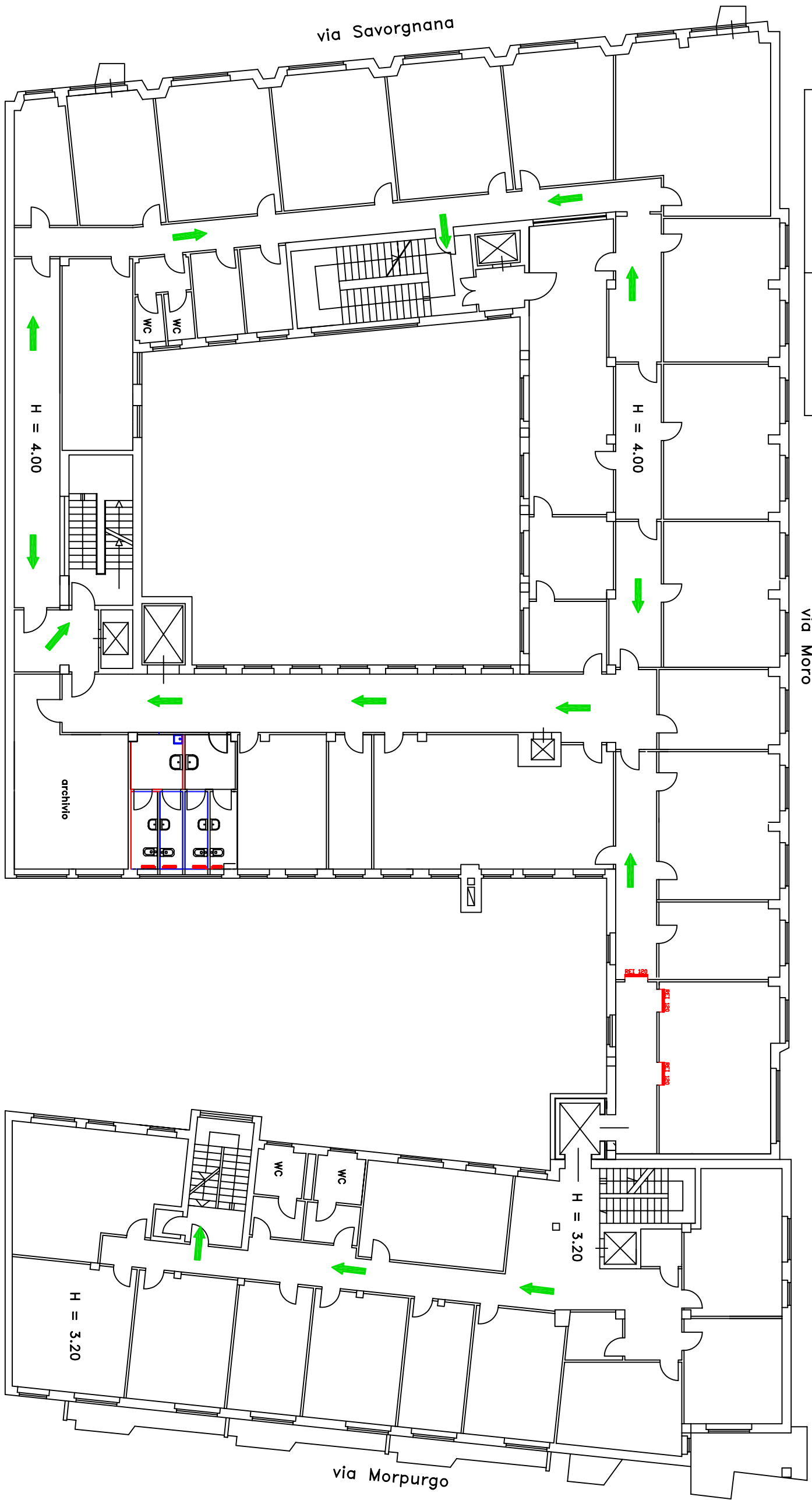


Pianta piano secondo

	
VIA DI FUGA	USCITA DI SICUREZZA



Progettato da	Arch. Bruno Colantonio	TAV. 1	Scala
Approvato da		Data	
SEDE REGIONALE FRIULI-VENEZIA GIULIA Via C. Battisti, 10 - 34125 TRIESTE		agosto	2010
AREA TECNICO EDILIZIA		PROGETTO PIANO SECONDO	
		STATO ATTUALE	