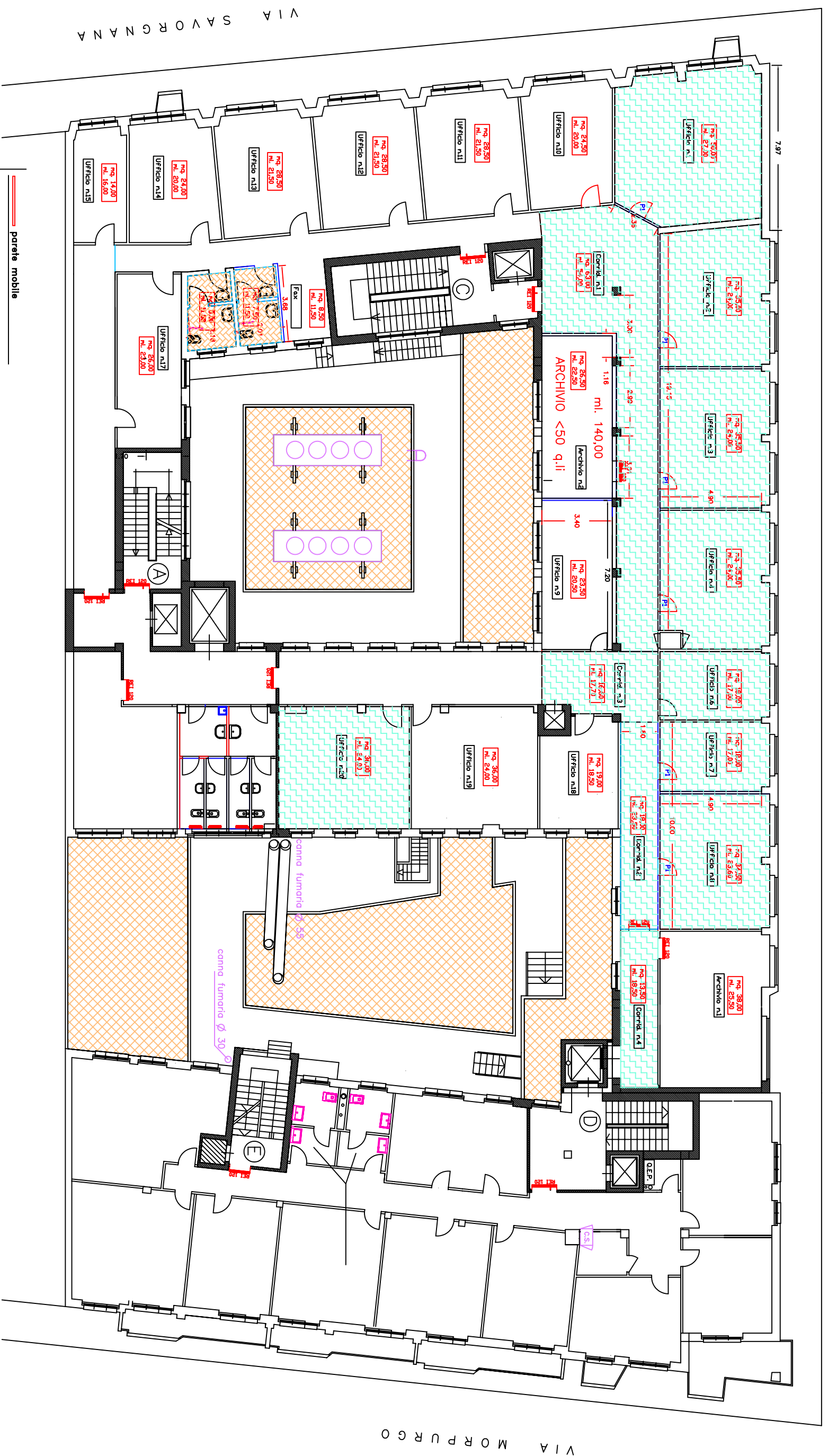
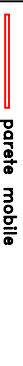
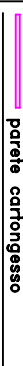
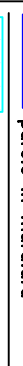





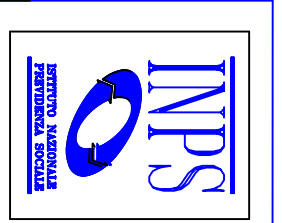
VIA MORO



VIA SAVORGNANA

VIA MORPURGO

-  parete mobile
-  parete cartongesso
-  parete in muratura
-  controsoffitto
-  Pavimento prefinito
-  Pavimento bagni



Progettato da	Arch. Bruno Colantonio	TAV. 4
Approvato da		Data
		LUGLIO 2010.
		Scala
SEDE REGIONALE FRIULI-VENEZIA GIULIA Via C. Battisti, 10/D - 34125 TRIESTE		PROGETTO PIANO SECONDO
AREA PROFESSIONALE TECNICO EDILIZIA		
		PAVIMENTI in PREFINITI