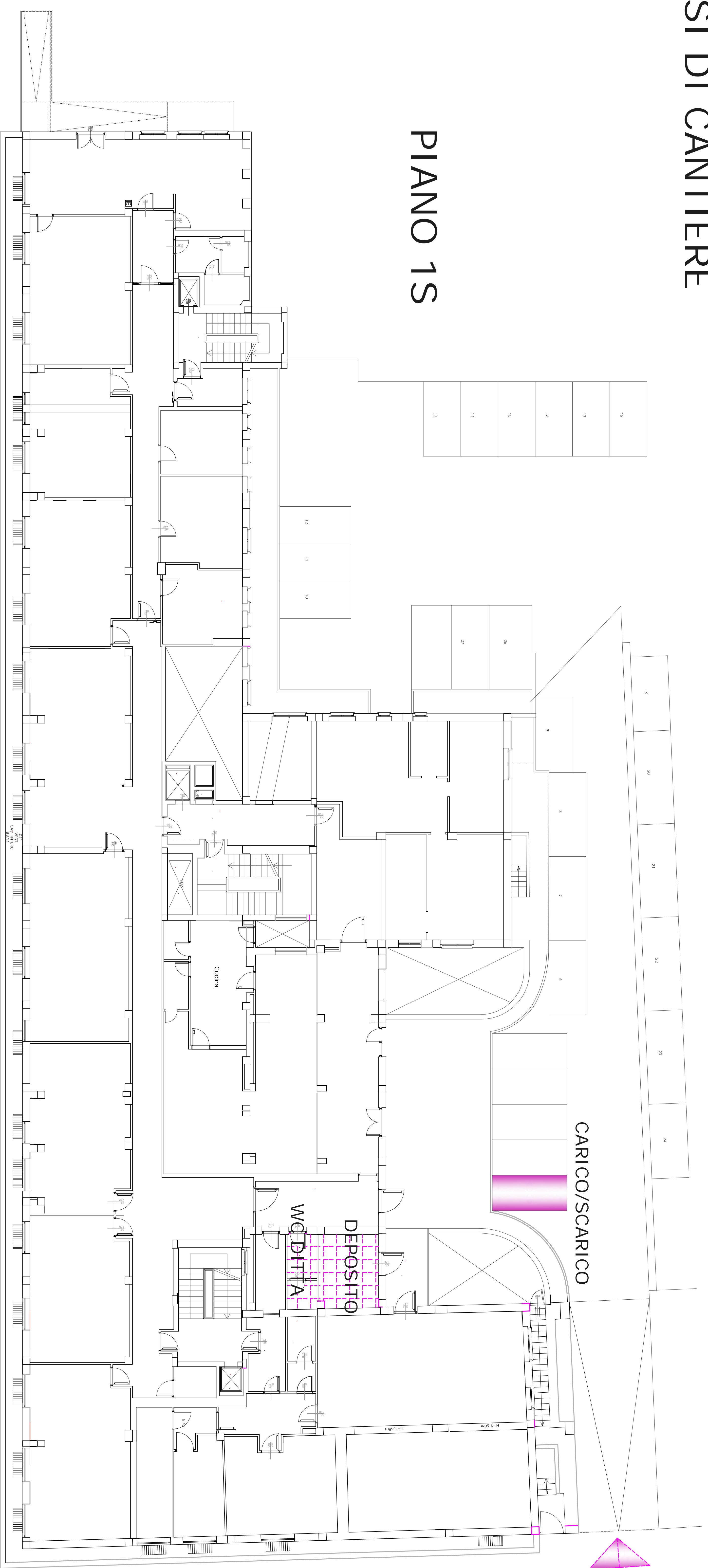

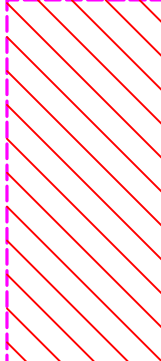
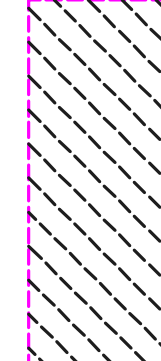
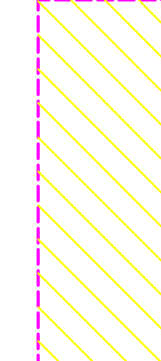

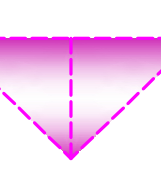
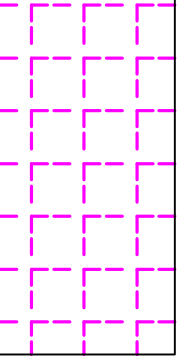
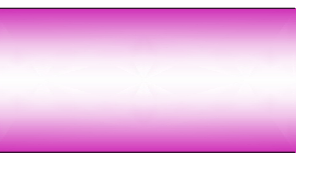
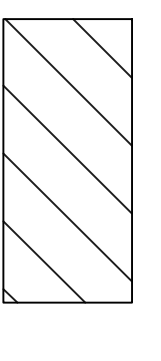
		UFFICIO TECNICO EDILIZIO Via Giulio Romano, 46 - 00196 ROMA	
ISTITUTO NAZIONALE PREVIDENZA SOCIALE		OGGETTO: Filiale di Coordinamento Roma Nord Agenzia di Roma Flaminio	
PROGETTO: adeguamento aree pubbliche		IL RESPONSABILE DEL PROCEDIMENTO Arch. Achille Ella	
PROGETTISTI: arch. Vincenza Pappacena arch. Emilia Barrelli ing. Paolo Barretto		Data: SETTEMBRE 2011	Rapp.: 1:100
PROGETTO ESECUTIVO: arch. Vincenza Pappacena		App: _____ Tav: _____	6
LEGENDA			

FASI DI CANTIERE

PIANO 1S



DELIMITAZIONE AREA CANTIERE

-  FASE A
-  FASE B
-  FASE C
-  FASE D
-  INGRESSO CANTIERE
-  INGRESSO CARRABILE
-  LOCALI RISERVATI ALLA DITTA
-  CARICO/SCARICO
-  AREA FUORI INTERVENTO

