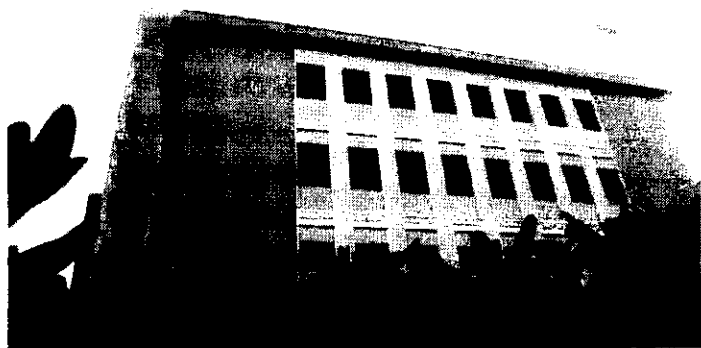


INPS

6.6.2

Sede Regionale per la Toscana
UFFICIO TECNICO EDILIZIO

PIANO DI SICUREZZA E COORDINAMENTO **Planimetrie Lay-out di cantiere**



SEDE DI LIVORNO

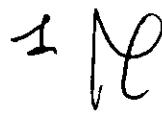
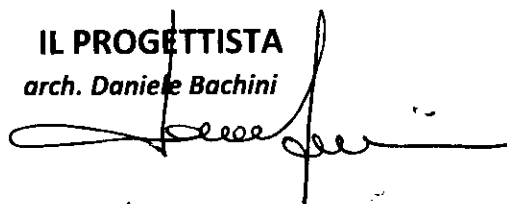
Via Tacca, 1

Opere di ristrutturazione del piano 1°

OTTOBRE 2012

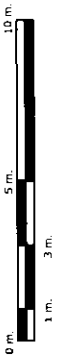
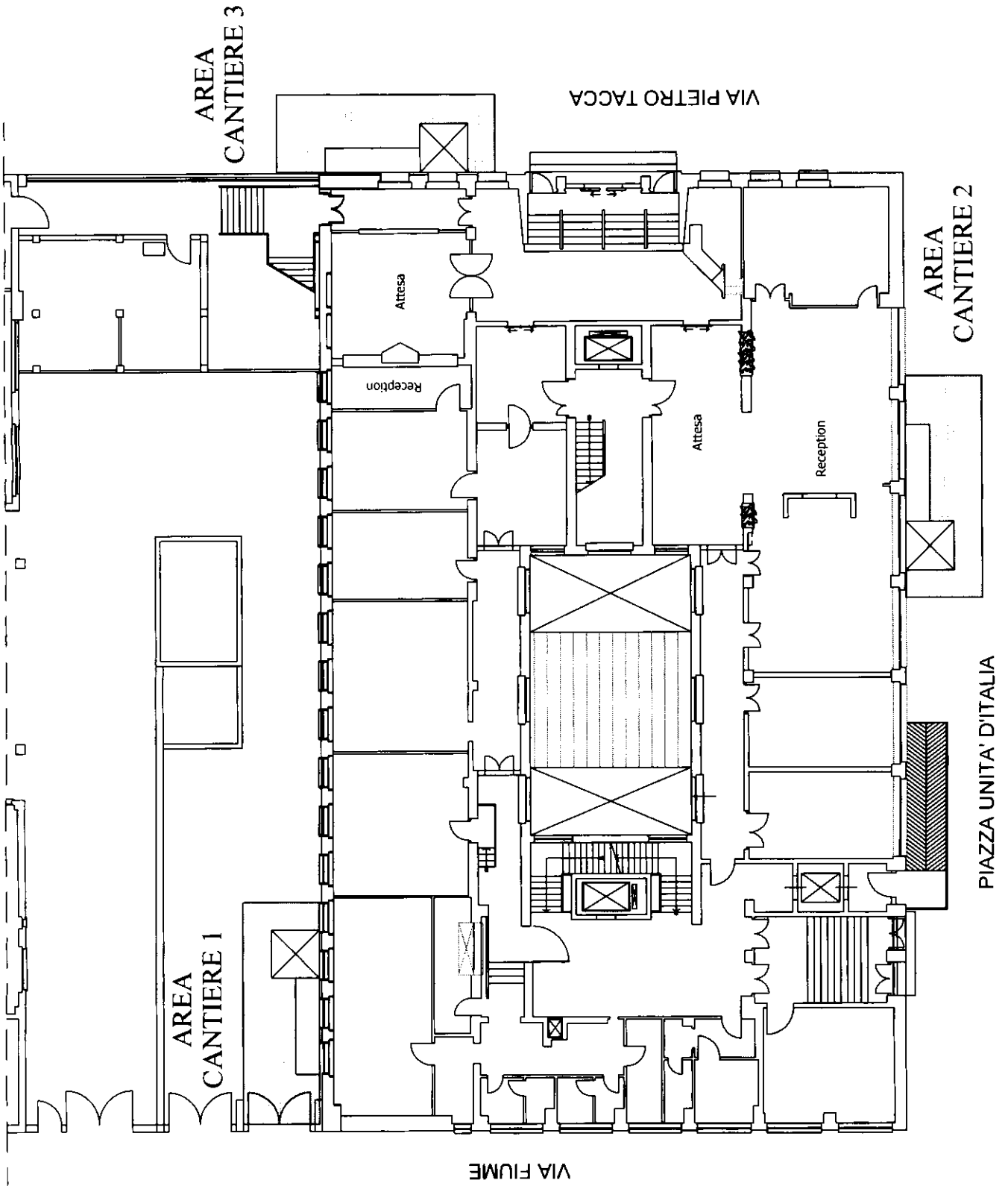
IL PROGETTISTA

arch. Daniele Bachini



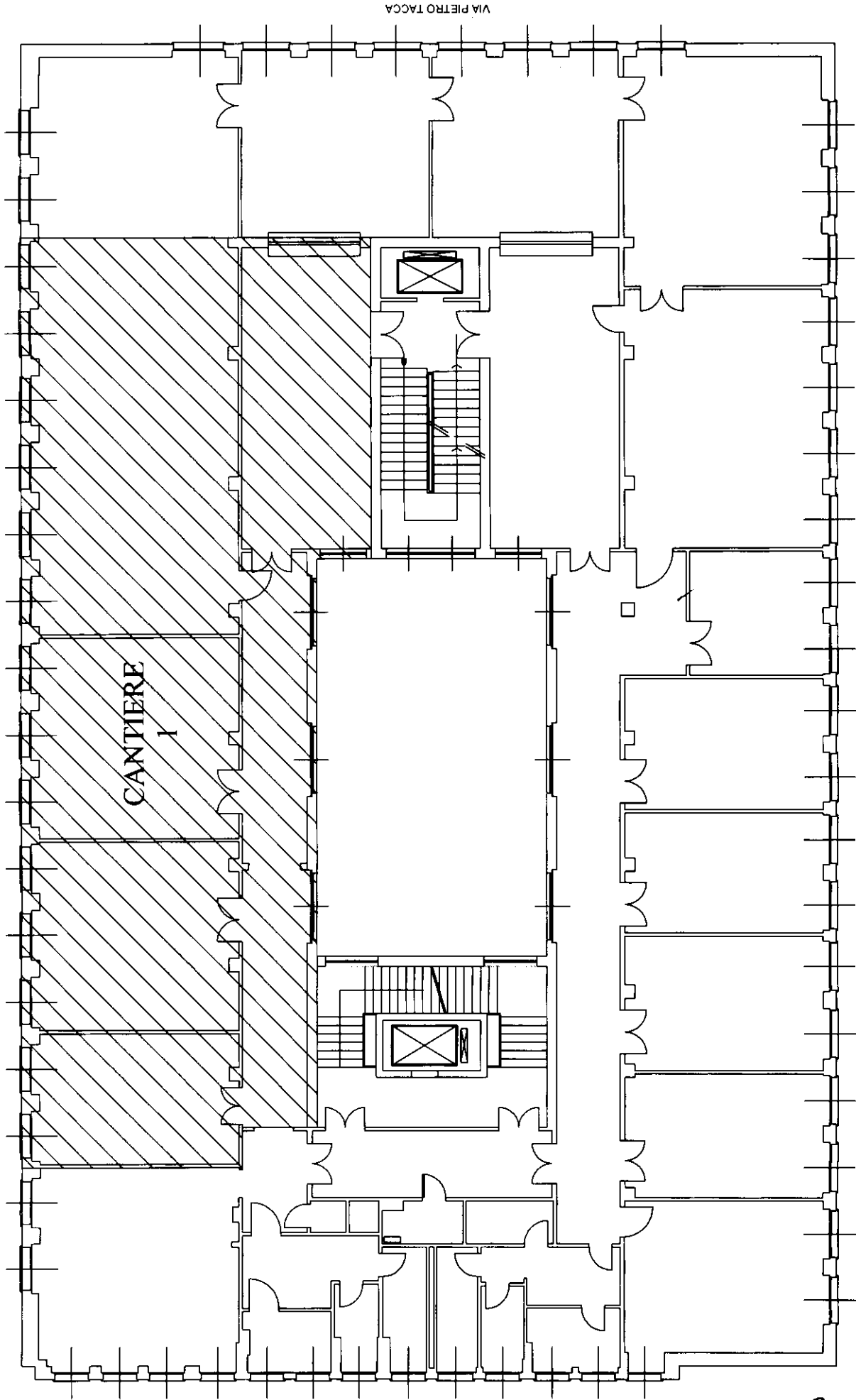
SEDE INPS DI LIVORNO
PIANO TERRA
AREE DI CANTIERE ESTERNE

Elaborazione grafica: *Antonio MANCARI*



19 2

STATO ATTUALE

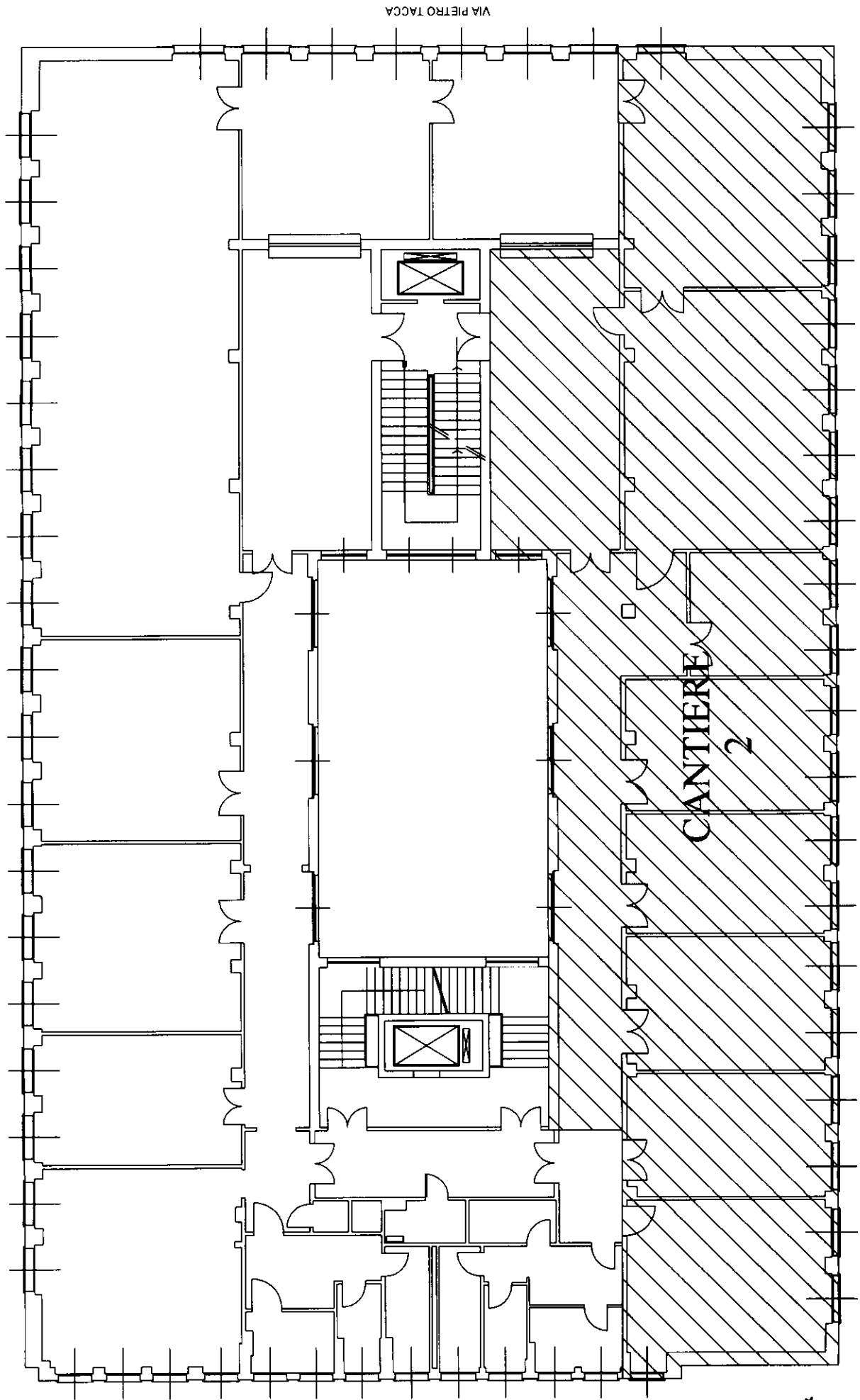


VIA PIETRO TACCA

PIAZZA UNITA D'ITALIA

3 *RL*

STATO ATTUALE



VIA PIETRO TACCA

CANTIERE
2

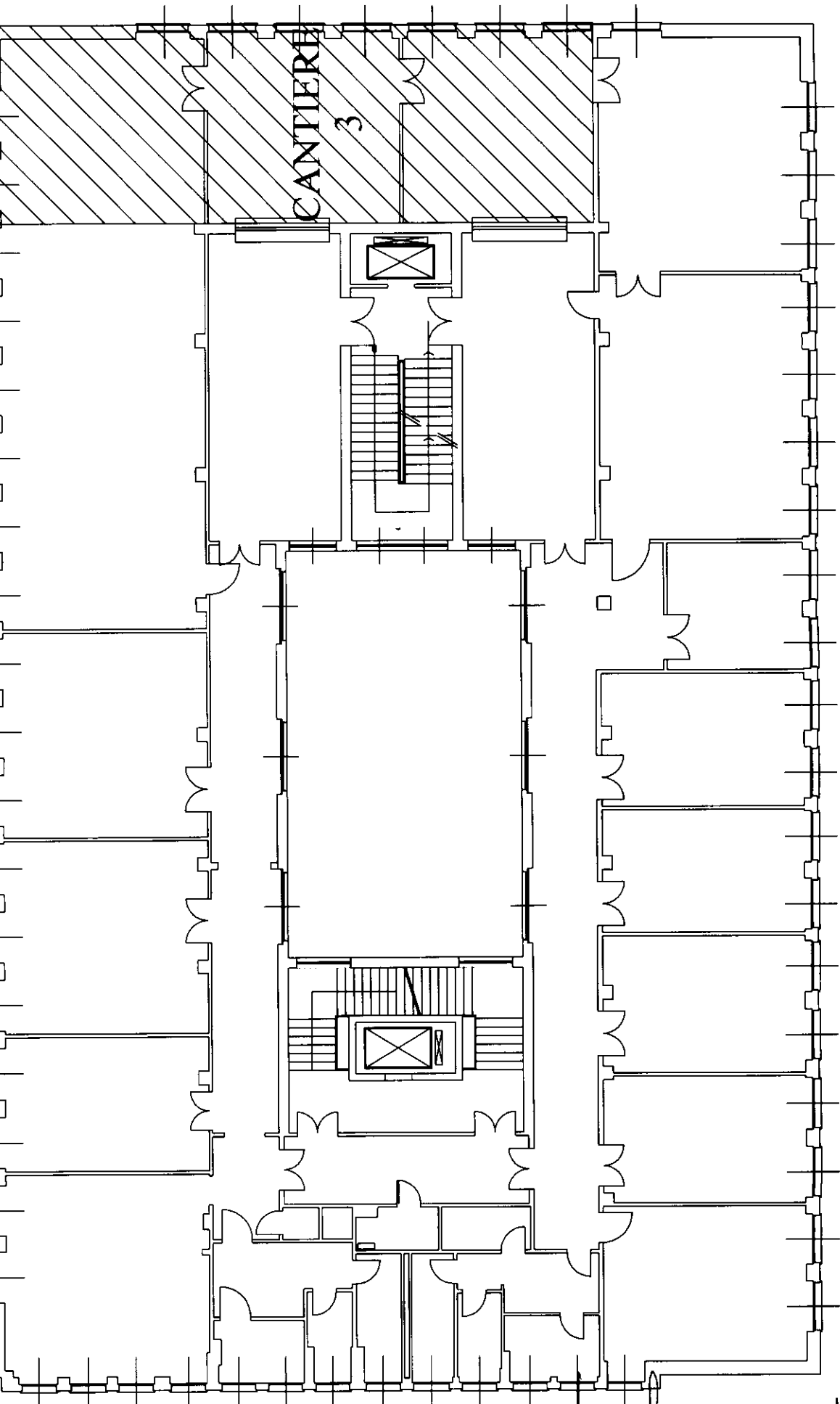
PIAZZA UNITA' D'ITALIA

4 M

VIA PIETRO TACCA

CANTIERE
3

PIAZZA UNITA D'ITALIA



Handwritten signature
S
18