








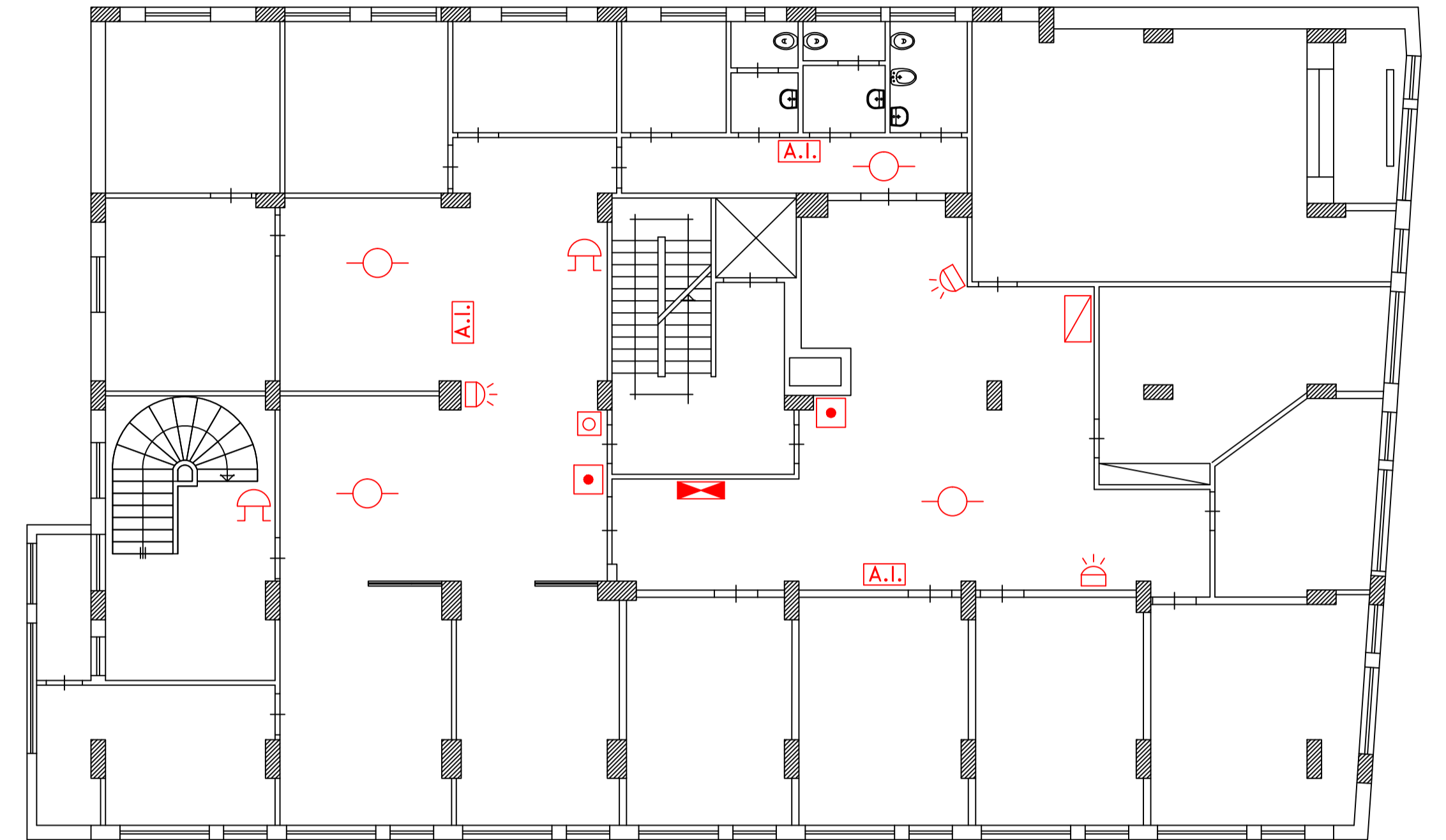
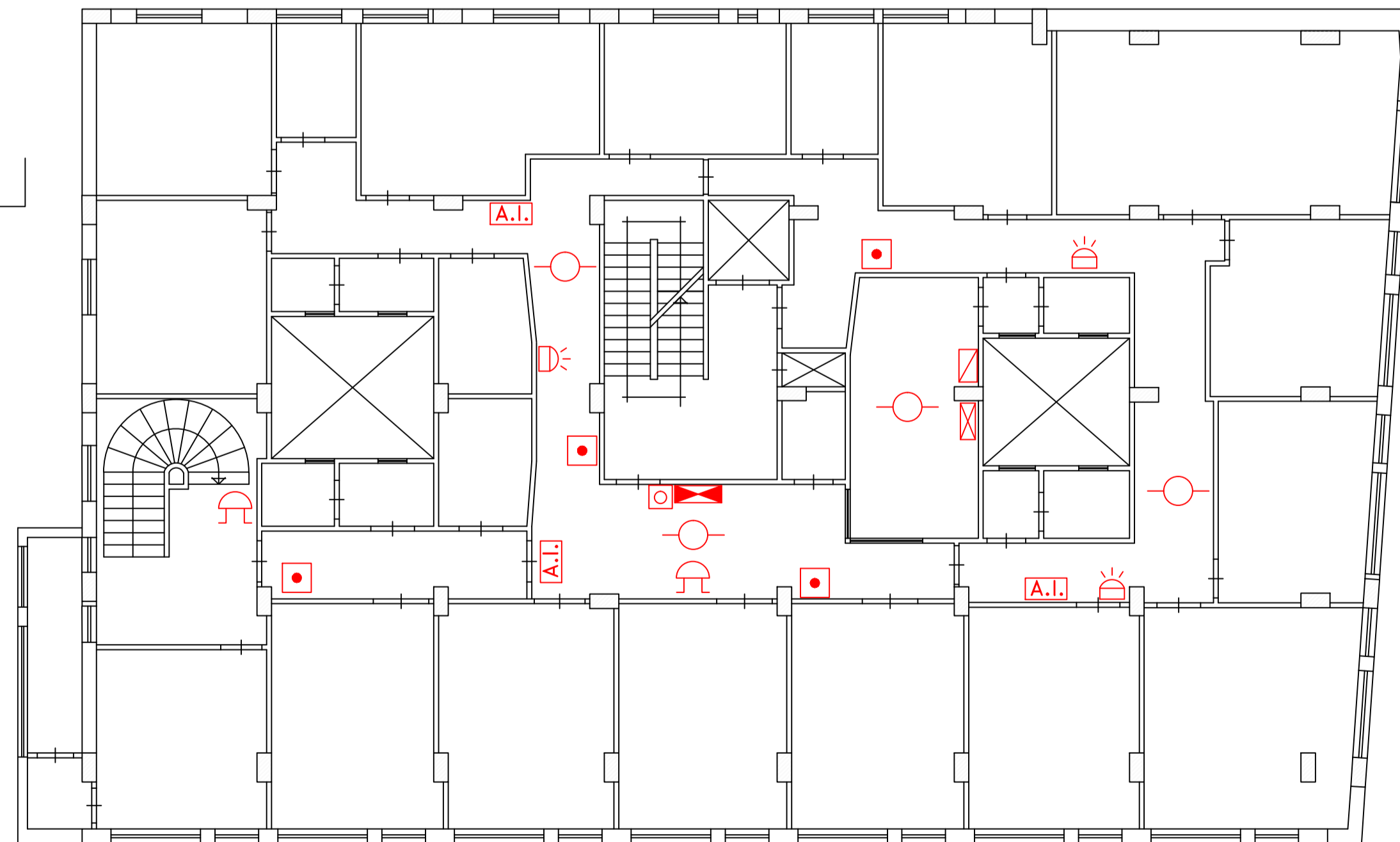
 <b>ISTITUTO NAZIONALE</b> <b>PENSIONI SOCIALI</b>	<b>SEDE REGIONALE PER LA SICILIA</b> <b>UFFICIO TECNICO REGIONALE PALERMO</b>	
	<b>OGGETTO</b> IMMOBILE DI PROPRIETA' INPS MESSINA. VIALE EUROPA, 58	<b>TAVOLA</b> 2
	Piani: primo, secondo e terzo.	<b>PROGETTO IMPIANTO ANTINCENDIO</b> RAPP. 1:100
	<b>DISEGNATORE</b> : Geom. S.re Caravello <b>COLLABORATORE</b> : Geom. S.re Caravello	<b>DATA</b> settembre 2014 AGGIORNAMENTI
	<b>PROGETTISTA</b> : P.I. Antonio Distefano <b>DIRETTORE LAVORI</b> : P.I. Antonio Distefano	<b>CODICE</b>

**LEGENDA**

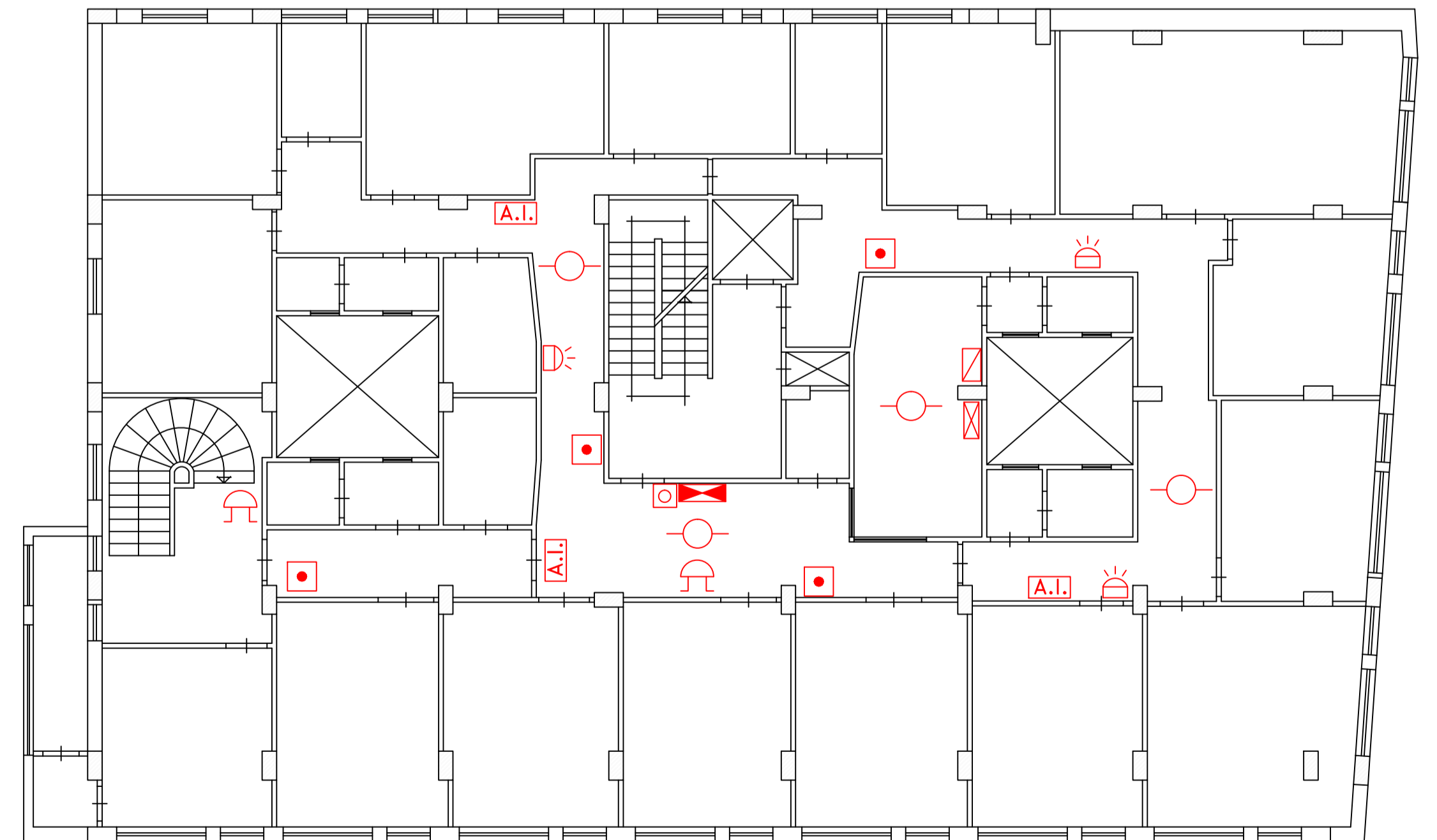
	- QUADRO ELETTRICO GENERALE
	- CENTRALINA ALLARME
	- QUADRO ELETTRICO ALLARME INCENDIO
	- ALLARME INCENDIO - PULSANTE A ROTTURA VETRO
	- PANNELLO SINOTTICO OTTICO/ACUSTICO AUTOMATICO
	- SUONERIA ALLARME
	- RILEVATORE INCENDIO
	- RILEVATORE OTTICO
	- CHIAVE ELETTRONICA DI INSERIMENTO ALLARME A TASTIERINO NUMERICO



**PIANTA PIANO PRIMO**



**PIANTA PIANO SECONDO**



**PIANTA PIANO TERZO**