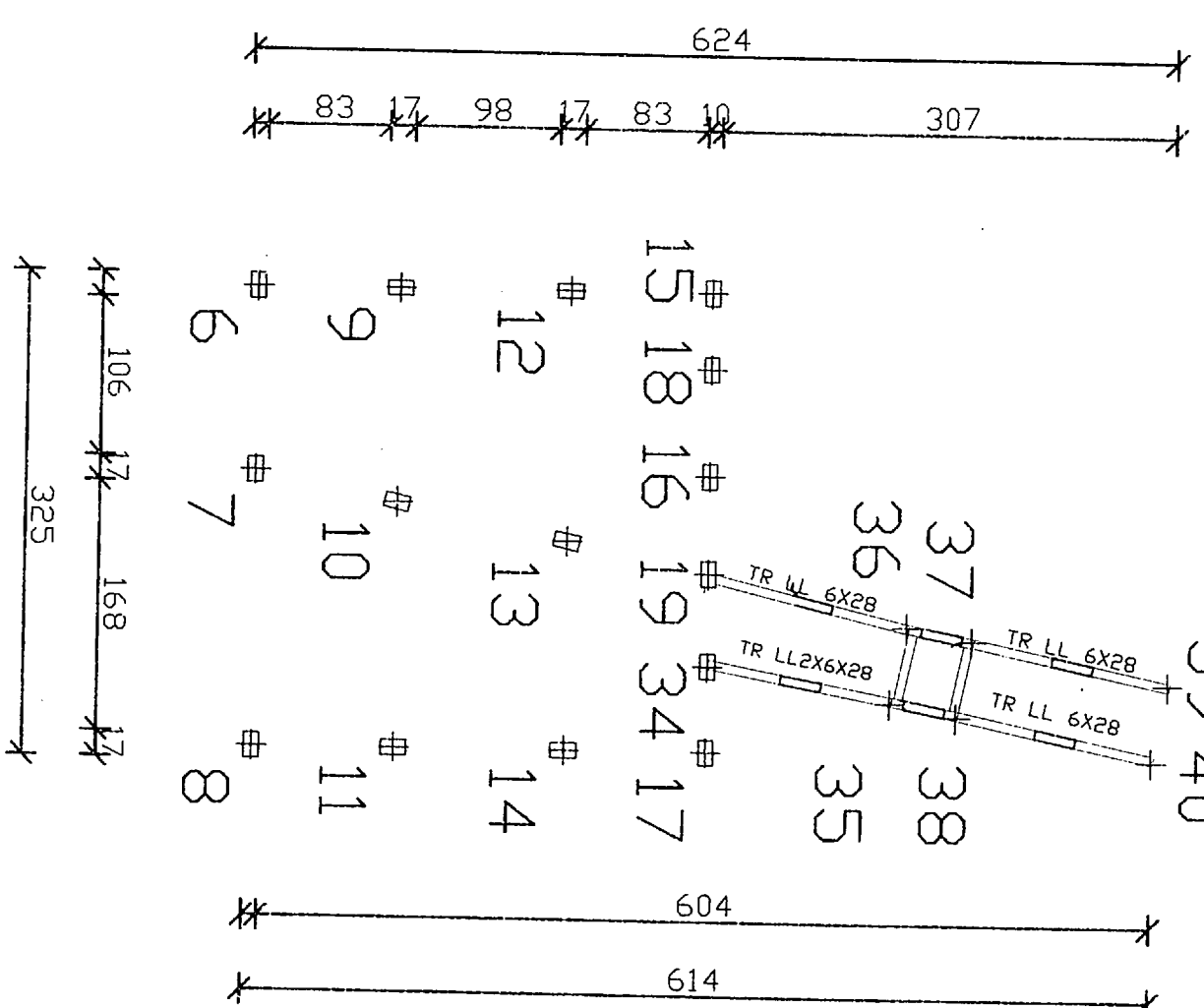
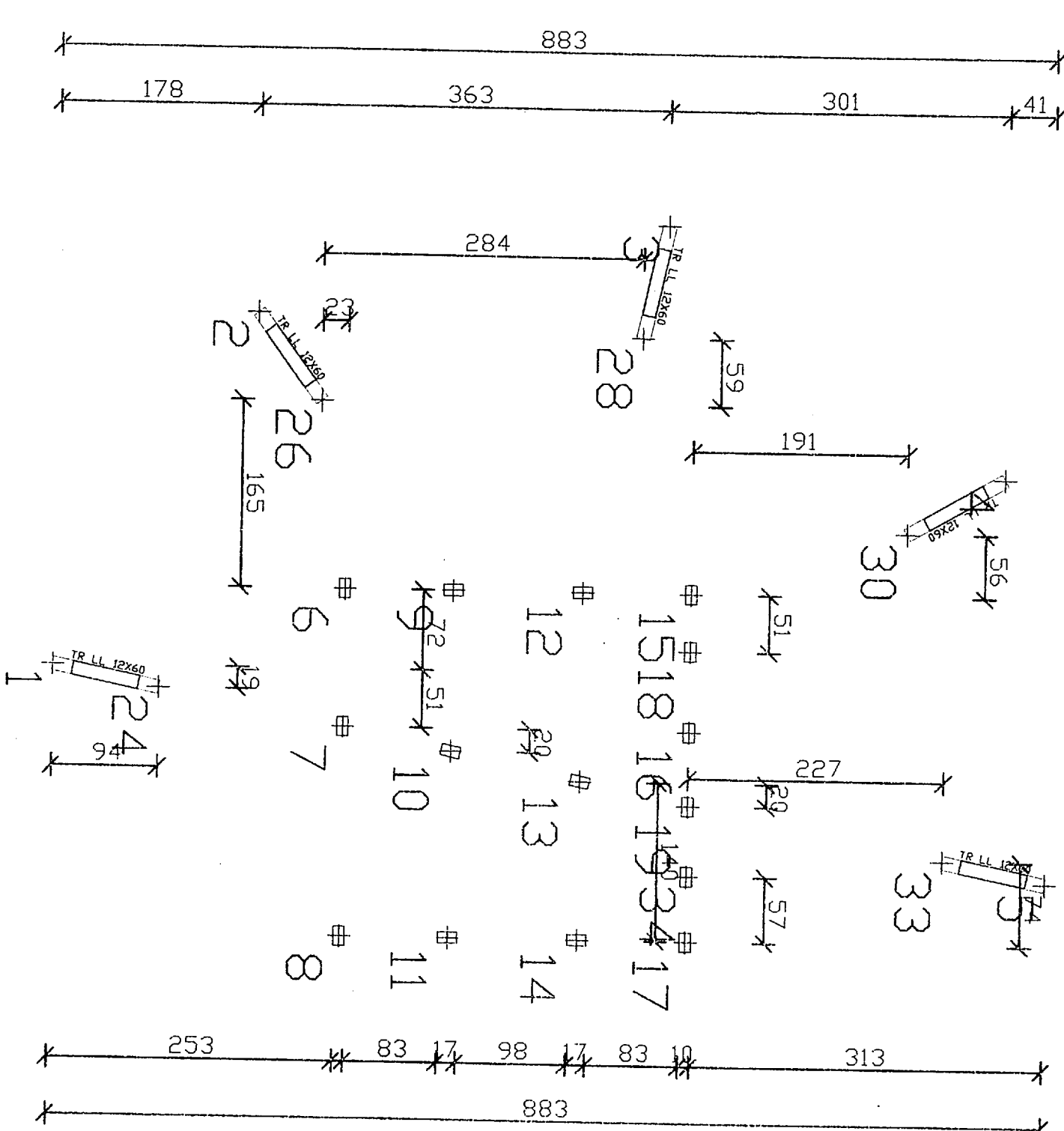
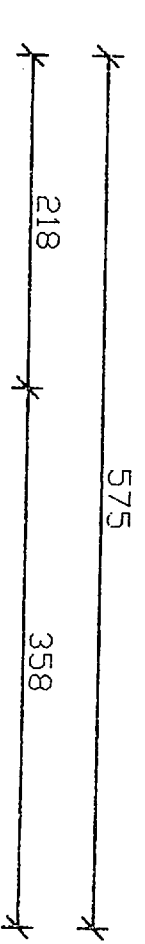


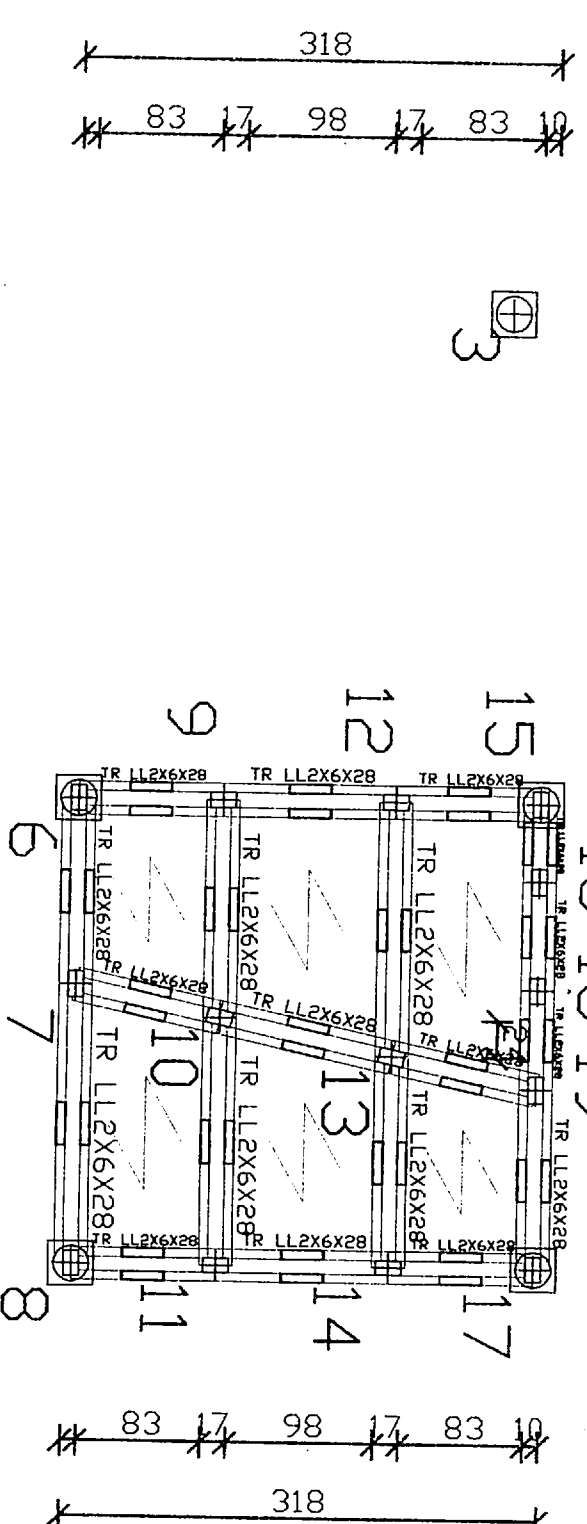
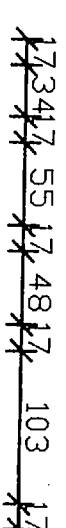
PIANTA IMPALCATO QUOTA m: 2.44



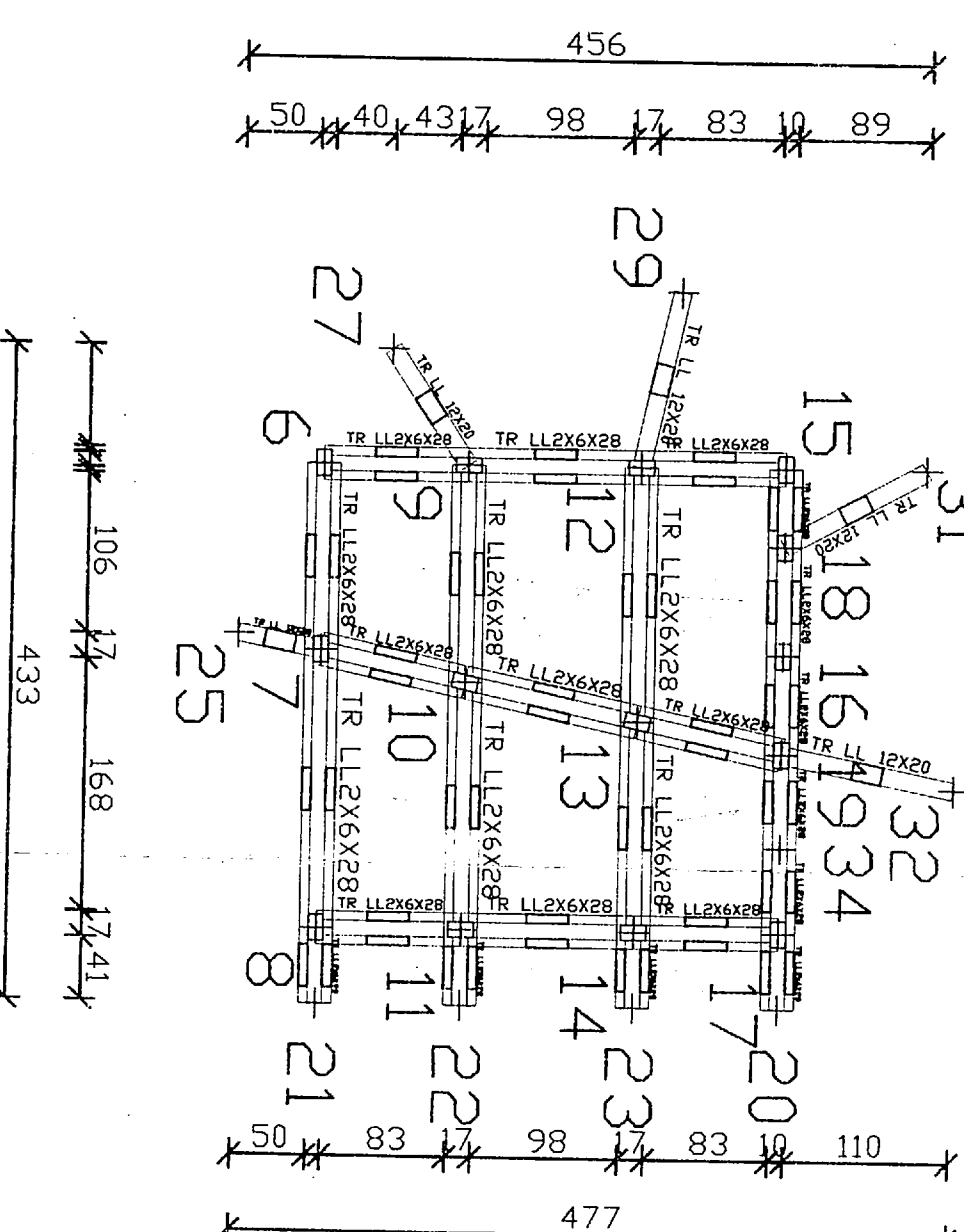
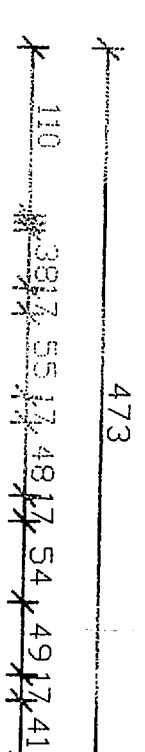
PIANTA IMPALCATO QUOTA m: 1.75



PIANTA IMPALCATO QUOTA m: 1.17



PIANTA IMPALCATO QUOTA m: 0.00



PIANTA IMPALCATO QUOTA m: 3.50

ENAM

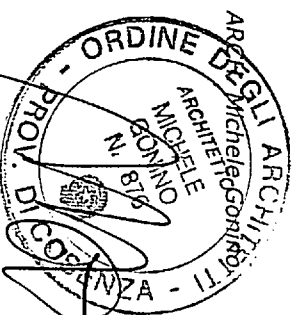
ENTE NAZIONALE DI ASSISTENZA MAGISTRALE  
VIALE TRASTEVERE, 231 - 00153 ROMA

COLONIA MARINA DI GIULIANOVA (TE)  
(LUNGOMARE ZARA)

PROGETTO PER LA REALIZZAZIONE DI CHIOSCO  
RISTORO SU SUOLO DEMANIALE IN CONCESSIONE  
RIF. PROT. ENAM N. 790 DEL 27/08/2001

TAV. N°  
8  
CARPENTERIA I CHIOSCO

IL PROGETTISTA  
IL RESPONSABILE DEL PROCEDIMENTO  
VISTI



Architetto: **Michela Scimone**  
Via Europa Anton Ilario - 67020 Carano (CS) - Tel. 0872 458087 - E-MAIL: scimonearch@unipesc.it  
Via Fontanelle, 45 - 00153 Roma - Tel. 06 832 19121-17424