



INPS

Istituto Nazionale Previdenza Sociale



ottobre 2018 – numero 14

WorkINPS *Papers*

**Connecting to Power:
Political Connection,
Innovation,
And Firm Dynamics**

Ufuk Akcigit

Salomè Baslandze

Francesca Lotti

ISSN 2532 -8565

Lo scopo della serie WorkINPS papers è quello di promuovere la circolazione di documenti di lavoro prodotti da INPS o presentati da esperti indipendenti nel corso di seminari INPS, con l'obiettivo di stimolare commenti e suggerimenti.

Le opinioni espresse negli articoli sono quelle degli autori e non coinvolgono la responsabilità di INPS.

The purpose of the WorkINPS papers series is to promote the circulation of working papers prepared within INPS or presented in INPS seminars by outside experts with the aim of stimulating comments and suggestions.

The views expressed in the articles are those of the authors and do not involve the responsibility of INPS.

Responsabile Scientifico

Pietro Garibaldi

Comitato Scientifico

Pietro Garibaldi, Massimo Antichi, Agar Brugiavini

In copertina: uno storico "Punto cliente" a Toscana

INPS, Direzione generale, Archivio storico

I WORKINPS PAPER

Le basi dati amministrative dell' *INPS* rappresentano una fonte statistica unica per studiare scientificamente temi cruciali per l' economia italiana, la società e la politica economica: non solo il mercato del lavoro e i sistemi di protezione sociale, ma anche i nodi strutturali che impediscono all'Italia di crescere in modo adeguato. All' interno dell'Istituto, questi temi vengono studiati sia dai funzionari impiegati in attività di ricerca, sia dai *VisitInps Scholars*, ricercatori italiani e stranieri selezionati in base al loro curriculum vitae e al progetto di ricerca presentato.

I *WORKINPS* hanno lo scopo di diffondere i risultati delle ricerche svolte all' interno dell'Istituto a un più ampio numero possibile di ricercatori, studenti e policy makers. Questi saggi di ricerca rappresentano un prodotto di avanzamento intermedio rispetto alla pubblicazione scientifica finale, un processo che nelle scienze sociali può richiedere anche diversi anni. Il processo di pubblicazione scientifica finale sarà gestito dai singoli autori.

Pietro Garibaldi,

Connecting to Power: Political Connection, Innovation, And Firm Dynamics

Ufuk Akcigit

(University of Chicago)

Salomè Baslandze

(Einaudi Institute for Economics and Finance)

Francesca Lotti

(Bank of Italy)

Connecting to Power: Political Connections, Innovation, and Firm Dynamics*

Ufuk Akcigit

Salomé Baslandze

Francesca Lotti[†]

October 8, 2018

Abstract

Do political connections affect firm dynamics, innovation, and creative destruction? We study Italian firms and their workers to answer this question. Our analysis uses a brand-new dataset, spanning the period from 1993 to 2014, where we merge: (i) firm-level balance sheet data; (ii) social security data on the universe of workers; (iii) patent data from the European Patent Office; (iv) the national registry of local politicians; and (v) detailed data on local elections in Italy. We find that firm-level political connections are widespread, especially among large firms, and that industries with a larger share of politically connected firms feature worse firm dynamics. We identify a *leadership paradox*: When compared to their competitors, market leaders are much more likely to be politically connected, but much less likely to innovate. In addition, political connections relate to a higher rate of survival, as well as growth in employment and revenue, but *not* in productivity – a result that we also confirm using a regression discontinuity design. We build a firm dynamics model, where we allow firms to invest in innovation and/or political connection to advance their productivity and to overcome certain market frictions. Our model highlights a new interaction between static gains and dynamic losses from rent-seeking in aggregate productivity.

Keywords: Political connections, creative destruction, firm dynamics, innovation, productivity.

JEL Classifications: O3, O4, D7.

*We thank Marco Chiurato, Salvatore Di Novo, and Marta Prato for excellent research assistance and our discussants Stefania Albanesi, Serdar Dinc, Stuart Graham, and Matteo Maggiori, for very constructive comments. We thank seminar and conference participants at the University of Chicago, Richmond FED, Georgetown University, Institute for Fiscal Studies, Harvard Business School, World Bank, Brandeis University, Tufts University, University College London, University of Maryland, EIEF, Bank of Italy, SKEMA Business School, CEPR Symposium, Philadelphia Fed, College de France, Banque de France, Turkish Central Bank, IESE, St. Louis FED, University of Toronto Rotman, New York Fed, Munich Summer Institute, SED Mexico, INPS, NBER Entrepreneurship meeting, NBER Political Economy meeting, NBER Productivity lunch meeting for very helpful feedback and discussions. For providing invaluable support with the data access, we thank the research division of the Social Security Institute of Italy (INPS), especially Massimo Antichi, Mariella Cozzolino, Edoardo Di Porto, and Paolo Naticchioni. The views expressed by the authors do not necessarily reflect those of the Bank of Italy or INPS.

[†]Akcigit: University of Chicago, NBER, and CEPR (uakcigit@uchicago.edu); Baslandze: Einaudi Institute for Economics and Finance and CEPR (salome.baslandze@eief.it); Lotti: Bank of Italy (francesca.lotti@bancaditalia.it).

“There are public officials who, instead of serving the interests of the community, put themselves at the service of private individuals. It’s a devastating situation: those firms that have political and administrative support, thanks to the “good” friend, manage to obtain illicit benefits, while honest companies look astonished at what happens.”

Carmelo Zuccaro, Chief Prosecutor of Catania¹
La Sicilia, May 3rd, 2018

1 Introduction

In May 2018, Mr. Carmelo Zuccaro, the chief prosecutor of the Sicilian port city of Catania, uttered the above quote during his press conference on the “Black Job” operation against the misconduct of local politicians. This quote succinctly demonstrates how some firms can secure preferential treatment in the market, thanks in no small part to their connections to local politicians. How widespread are such connections to local politicians, and how do they affect firm dynamics, market competition, innovation, and the overall productivity process in the economy? This paper studies these questions, both theoretically and empirically.

A growing body of literature argues that factor reallocation from less productive to more productive firms is an important source of productivity growth (e.g., Bartelsman and Doms, 2000; Foster, Haltiwanger and Krizan, 2001, 2006). Similarly, innovation-based endogenous growth models (e.g., Aghion and Howitt, 1992; Grossman and Helpman, 1991) assert that the process of *creative destruction*, whereby unproductive incumbents are replaced by innovative new entrants, is the key ingredient for economic growth. These models assume that it is sufficient for an entrepreneur to innovate the most superior product or production technology to seamlessly replace an incumbent firm, and thus become the new market leader. However, many examples, such as the one in the opening paragraph, illustrate that there might be more to it than that. Political connections can help some firms dominate a market, even if they do not necessarily introduce a more superior product or process.

Our analysis begins with an empirical investigation, focusing on Italy from 1993 to 2014. There are three main reasons for this. First, as hinted by our opening story, there is ample anecdotal evidence for the link between political power and the corporate sector in Italy. Perhaps the largest manifestation of this presumption was the historical episode of Mani Pulite (“Clean Hands”) – an investigation into a huge political scandal, which eventually uncovered a dense network of corruption and bribery throughout Italy in the early 1990s.

Second, to rigorously study all the channels through which political connections affect firm dynamics, we need a very detailed, large-scale micro dataset on firms and their connections. To this end, we construct a brand-new dataset for the Italian economy, spanning the entire period of 1993-2014, wherein we merge: (i) firm-level balance sheet data; (ii) social security data on the universe of workers; (iii) patent data from the European Patent Office; (iv) the national registry of local politicians; and (v) detailed data on local elections in Italy. We define a firm as being *politically connected* at time t if the firm employs at least one local politician at time t . The nature of this data

¹<https://www.lasicilia.it/news/cronaca/157854/il-procuratore-zuccaro-ci-sono-funzionari-pubblici-al-servizio-di-privati.html>

allows us to exploit rich heterogeneity in the type of connection – based on the level or rank of a position, or the party affiliation of a politician employed. Our unique, five-way data match allows us to examine at the micro level how firms change their competition strategy as they gain market power, or what firm-level outcomes are associated with (or implied by) political connections. In addition, we study how factor reallocation among incumbents and new firms is affected by the presence of political connections.

Third, the Italian economy has been performing poorly, particularly in terms of productivity growth, since the 1990s (see, for instance, [Bugamelli and Lotti, 2018](#)). While many reasons could be at play for low and stalling aggregate productivity, we try to shed some light on the aggregate implications of firm-level political connections through their effect on firm dynamics, innovation incentives, and competition.

The focus on *local* politicians – at the municipal, provincial, and regional level – is also a distinctive feature of our analysis relative to most of the empirical literature that looks at high-profile connections. Indeed, local-level connections are much more pervasive and usually harder to identify. In addition, local politicians hold extensive power: among other duties, they have authority over and responsibility for the provision of local public goods and services; administrative authority over the issuing of various permits and licenses; and are responsible for the majority of the administrative burden faced by private firms in Italy.²

Our empirical analysis uncovers the following important findings:

Fact 1 *Firm-level political connections are widespread, especially among large and old firms.*

Fact 2 *More connected industries face lower firm entry, but conditional on entry, entrants are more likely to be connected than in other industries.*

Fact 3 *Industries with a higher share of politically connected firms have a lower share of young firms and exhibit lower growth and productivity.*

Market competition comes with a certain level of tension between the market leader and its competitors. While followers try to leapfrog the leader with new products or technological innovation, the leader may often rely on various defensive strategies to maintain its market position. These defensive strategies could include the establishment of political connections. In our empirical analysis, we identify some strong evidence to support this *leadership paradox*:

Fact 4 *Market leaders are the most politician-intensive but the least innovation-intensive, relative to their direct competitors.*

In addition, we find:

Fact 5 *Politically connected firms are more likely to survive, and their survival probability increases in the political power of the politicians they employ.*

Fact 6 *At the firm level, political connections are associated with higher employment and revenue growth but not with productivity growth.*

²See Section 7 for more details.

We exploit a quasi-random discontinuity caused by local elections decided on a thin margin in order to gauge causality in our firm-level results (Lee, 2008). We collect new data on all local elections in Italy and, based on vote allocation, identify elections that have been decided on a thin margin. Our regression discontinuity (RD) design compares firms that have been connected right *before* a marginally contested election with a politician from marginally losing versus marginally winning parties. Since the results of closely contested elections can be considered as pure chance (breaking news, weather shock, etc.), discontinuity in outcomes between marginally winning and losing firms *after* the election can be attributed to the causal effect of majority-level connections on the firms' outcomes. We find that differences in post-election outcomes between marginally winning and marginally losing firms are large: firms on the winning side grow much more in terms of size but not in productivity.

Finally, given the nature of our social security data, we can also observe the compensation levels of politicians inside the companies and give a back-of-the-envelope estimate for the rent (static surplus) sharing between firms and their worker-politicians. As a result, we find that:

Fact 7 *Worker-politicians earn significant wage premiums relative to their co-workers. This premium increases with the political rank of a worker.*

Our analysis ends with a theoretical investigation of how political connections can exert drag on the economy – bringing lower reallocation, less innovation, and less entry. We build an illustrative model where firms face bureaucratic/regulatory burdens³ that may be alleviated by connecting with politicians, but those connections are costly. The static problem implies a threshold rule of firm size, above which firms find it profitable to incur the cost of connections to lower the burden of regulations – hence, in line with the evidence, larger firms (and market leaders) are more likely to be politically connected. As with the data, we also discover that firms that become connected enjoy (temporarily) higher employment and sales growth but have lower labor productivity growth. However, in a dynamic perspective, industries that have politically connected incumbents face lower entry by new firms. Intuitively, new firms need to compete with incumbents not only in terms of productivity, but they also need to overcome the regulatory or bureaucratic burden, to which the connected incumbent is already immune. An additional amplification comes from the fact that incumbents anticipate this dynamic effect and strategically choose to become politically connected to preempt competition.

The model highlights the important contrasting facets of firm-level connections for the aggregate economy. Statically, connections may be beneficial in overcoming certain market frictions; however, they may also bring dynamic losses, since the incumbents' connections give them an unfair advantage over other market participants. In this way, while political connections might be desirable for static considerations, they distort competition and firm dynamics, resulting in markets that are dominated by older and larger firms with low innovation and productivity growth. This interplay is at the heart of both our empirical and theoretical constructs.

³For an extensive evidence on high bureaucratic/regulatory burden and political connections in Italy, see Section 7.

2 Related Literature

The process of creative destruction is at the center of endogenous growth models (Aghion and Howitt, 1992; Grossman and Helpman, 1991). Likewise, a growing body of empirical literature shows that creative destruction and factor reallocation are important contributors to aggregate productivity growth (Bartelsman and Doms, 2000; Foster, Haltiwanger and Krizan, 2001, 2006). Less is known, however, about what factors are significant impediments to such reallocation. While addressing this question, our study brings out the interaction of two separate strands of literature: the literature on idiosyncratic distortions and implied static misallocation (Restuccia and Rogerson, 2008; Hsieh and Klenow, 2009) and the literature on dynamic creative destruction discussed above. We show that the existence of political connections that alleviate certain market frictions can lead to an asymmetric distribution of distortions between incumbents and entrants – impeding creative destruction and growth.

On the other hand, our study contributes, both empirically and theoretically, to a separate body of literature on firm-level political connections and their implications. Politicians and entrepreneurs have often found themselves along the road in the pursuit of power. Recent empirical evidence shows that political connection is a widespread phenomenon, and a positive relationship between political connections and firm value has largely been documented (Fisman, 2001). Moreover, politically connected firms have been observed both in developed and developing countries, including the US, the UK, France, Italy, Turkey, China, Malaysia, Indonesia, Korea, Thailand, and Singapore (Johnson and Mitton, 2003; Khwaja and Mian, 2005; Leuz and Oberholzer-Gee, 2006; Fan, Wong and Zhang, 2007; Cingano and Pinotti, 2013; Schoenherr, 2015).

The reasons that might lead a private company to pursue political connections are most certainly linked to profit maximization; surely, then, expected benefits must exceed the costs of establishing said connections, but the channels through which this is realized are manifold. The range of benefits provided by governments to favored firms include preferential access to credit (Joh and Chiu, 2004; Cull and Xu, 2005; Johnson and Mitton, 2003; Khwaja and Mian, 2005); preferential treatment by government-owned enterprises (Backman, 2001; Dinc, 2005) and for procurement (Goldman et al., 2013); relaxed regulatory oversight of the company in question or stiffer regulatory oversight of its rivals (Kroszner and Stratmann, 1998); lighter taxation (De Soto, 1989; Arayavechkit, Saffie and Shin, 2017); allocation of public subsidies to R&D (Fang, Lerner, Wu and Zhang, 2018); and government bailouts of financially distressed firms (Faccio and Parsley, 2006). While political connections are clearly valued positively in the stock market (Faccio and Parsley, 2006; Acemoglu, Hassan and Tahoun, 2017), they become especially valuable wherever there are high levels of regulation, corruption, and population concentration – like in many capital cities, for instance. In addition, political connections have been also shown to be more valuable in small firms and in firms that rely more on external finance (Do and Levchenko, 2006).

There are different views on the social costs stemming from corruption and rent-seeking. On the one hand, if connections are aimed at reducing the burden of bureaucracy and administrative regulation, they do not necessarily imply a negative effect on welfare. This mechanism, known also as the *greasing wheels hypothesis* (Kaufmann and Wei, 1999), is expected to have a positive effect on welfare, since it increases efficiency through a relief of the burden of regulation (Shleifer and Vishny,

1994). On the contrary, if a connected firm exerts a rent seeking behavior, for example by diverting public demand (Goldman, Rocholl and So, 2013), the entailed social cost may be high. This second effect, named the *grabbing hand hypothesis* (Shleifer and Vishny, 2002), is consistent with the results provided by Cingano and Pinotti (2013) on political connections in Italy. Focusing on a small sample of Italian manufacturing firms surveyed by the Bank of Italy, representative of those with at least 50 employees, matched with data on politicians appointed at the local level, they find that firms experience revenue premium from connections mainly coming from public demand shift towards politically connected firms.

We contribute to the empirical literature on political connections by analyzing a newly constructed, large-scale dataset based on multiple administrative datasets for the universe of firms and workers from Italy. This allows us to provide a detailed analysis of the effect of connections on firm outcomes – including a causal RD design – as well as the effect on aggregate firm and industry dynamics in the whole economy. We bring new evidence on the relationship between political connections and firms’ innovation, survival, and industry entry and competition – something that has received less attention in the literature so far.⁴ In addition, we provide some new facts on how politically connected firms are compensating their worker-politicians – another unique feature of our analysis.

On the theory side, surprisingly little has been done to understand social costs of rent-seeking through its impact on business dynamics, innovation, and aggregate productivity growth – aspects that are the focus of this article. Two exceptions are Krusell and Rios-Rull (1996) and Mukoyama and Popov (2014), where the authors study the models with tensions between new and old technologies/incumbents and entrants in the environments where firms can influence entry policies. In his seminal paper, Baumol (1990) maintained that large growth differences between or within countries should, to a great extent, be driven by differences in the allocation of entrepreneurial talent between productive and growth-enhancing entrepreneurship or unproductive and destructive entrepreneurship, such as rent seeking or organized crime. Countries’ institutions, policies and social reward schemes drive the allocation of entrepreneurial talent between those activities. Relatedly, seminal works by Murphy, Shleifer and Vishny (1991) and Shleifer and Vishny (2002) focus on the problem of occupational choice between high-productivity sectors (entrepreneurs, engineers, etc.) and low-productivity sectors that are centered on rent-seeking and intermediation (law, financial services, etc.). In societies that reward rent-seeking activities more, a lower pace of growth is observed. While those papers focus on the allocation of talent and discuss potential consequences for growth, more recent papers by Arayavechkit, Saffie and Shin (2017) and Garcia-Santana, Pijoan-Mas, Moral-Benito and Ramos (2016) point out static capital misallocation across different firms, resulting from preferential treatment by the various governments.

Our theory takes a different approach to understanding potential benefits and social costs associated with political connections. Our focus is the effect on innovation, creative destruction, and firm dynamics. We show that in an environment with high market frictions (such as regulations or bureaucracy) – where a firm’s route to success often runs through the political system – political

⁴An interesting new evidence coming from historical data from the Venetian Republic shows that politically connected craft guilds patented less (Comino, Galasso and Graziano, 2017) – possibly, indicating that guilds were substituting formal intellectual property protection with political protection.

connections may impede growth by lowering innovation and reallocation.

The paper is organized as follows. Section 3 provides an overview of the data and variable construction, provides some insights on the institutional background, and discusses relevant summary statistics. Section 4 shows the main firm-level analysis at the micro level. Section 5 describes the regression discontinuity design to establish causality. Section 6 then explores politicians' compensation. Section 7 provides a theoretical framework, while Section 8 concludes.

3 Data and Aggregate Statistics

We tap on data from multiple administrative sources to build a comprehensive dataset on firms, workers, and local politicians in Italy for the period 1993-2014. The core of this data construction is the newly available individual-level data from the Italian Social Security Administration (INPS).⁵ We combined the rich Social Security (SS) data with administrative data on firms' balance sheets (Cerved) to obtain a detailed matched employer-employee dataset for Italy. On the firms' side, the data is further augmented with information on firm-level innovation activities derived from patent records in PATSTAT. Crucially, on the workers' side, we combine SS data with individual records on the universe of local politicians from the Italian Registry of Local Politicians (RLP). This allows us to track whether a politician works in the private sector while holding office. The literature has coined the term "moonlighting politicians" to refer to such politicians: it is exactly the existence of moonlighting politicians that helps us to identify political connections at the firm level. Finally, we also construct new data on all local elections in Italy held in 1993-2014. Together, RLP and elections data allow us to define various attributes of an individual's political career, such as type of political position, rank, party affiliation, and participation in marginally contested elections.

Below, we provide an overview of the data and main steps undertaken during the data construction, while we delegate a more detailed discussion of data cleaning and variable construction to Appendix A. Table 1 gives a summary of the data sources.

3.1 Data Sources

Dataset #1: Social Security Data (INPS)

We access the Italian Social Security Data at the Italian National Institute of Social Security within the VisitINPS Scholars program. INPS data covers the universe of private sector workers, whose employers make social security contributions in Italy. Part-time workers, as well as temporary-contract workers, are part of the INPS data, while self-employed, public employees, agriculture workers or contractors are not. This data provides us with information about both workers and firms.

On the workers' side, the SS data provides complete information on employment histories. Among other things, we obtain information on the identities of firms they are employed in, job start and separation dates, gross labor income (including bonuses and overtime), number of months/weeks worked in a year, type of contract (e.g., full-time or part-time, permanent or temporary), and broadly

⁵Data became available through the VisitINPS Scholars program initiated in 2016.

Table 1: DATA SOURCES

<i>Data</i>	<i>Source</i>	<i>Content</i>	<i>Time Span</i>	<i>Variables</i>
1. Social Security	INPS	Individual-level: Universe of private sector employees (except contractors & agriculture)	1985-2014	Employment history, labor income, job characteristics, demographics.
	INPS	Firm-level: Universe of firms with at least one paid employee (except agriculture)	1985-2014	Entry, exit, size, workforce characteristics, industry, location.
2. Firm Financials	Cerved	Universe of limited companies	1993-2014	Balance sheets, income statements.
3. Patent Data	PATSTAT	All EPO patents filed by Italian firms	1990-2014	Patent grant status, patent families, technology classification, citations, claims.
4. Registry of Local Politicians	Ministry of Interior	Universe of local politicians (regional, province, municipality)	1985-2014	Political position attributes, party affiliation, demographics.
5. Elections Data	Ministry of Interior and own collection	Regional, province, municipality election outcomes	1993-2014	Candidates, parties, coalitions, vote shares, seats.

defined occupation description (from which we construct white-collar and blue-collar classifications). In addition, the data provides individual demographic information on the workers.

On the firms' side, we have information on all workers they employ and the corresponding characteristics of those workers described above. This lets us construct a reliable variable on firm size, average wages paid, or various work-force composition variables. Importantly, we also have complete demographic data on the firms – firm industry classification (ATECO 2007), location, entry and exit dates.⁶ For our purposes, this data is essential since this firm-level data on the universe of private-sector firms allows us to construct aggregate moments on firm entry, exit and turnover across industries, location, and time.

Dataset #2: Firm Financials Data (Cerved)

We use proprietary firm-level data from Cerved, administered by Cerved Group.⁷ The data provides balance sheets and income statements for all incorporated firms in Italy for the 1993-2014 period. Firms not covered are mainly small firms – sole proprietorship or small household producers. We make use of standard company accounts variables such as assets, intangible assets, value added (VA), and profits. We compute a firm's labor productivity, LP , as value added per worker. Total

⁶It is hard to identify establishments using this data, hence our unit of analysis is a firm. However, in Italy the average number of establishment per firm is just 1.07 (Istat, Census 2011 data).

⁷This data gives rise to the Italian segment in ORBIS (Aida).

factor productivity, TFP , is calculated as the residual z from a standard Cobb-Douglas specification $Y = zK^\alpha L^{1-\alpha}$, where Y is measured as value added, K is measured as total assets, L is employment, and labor share $(1 - \alpha)$ is equal to the average industry-level labor share from the data.

Dataset #3: Patent Data (PATSTAT)

Our patent data source is the European Patent Office Worldwide Patent Statistical Database (EPO PATSTAT).⁸ PATSTAT provides coverage of all patents published (granted or not) at the EPO up to the spring 2016. This amounts to nearly 60 million patent applications from 1978 to 2014. We use this data to understand the patenting activity of firms in Italy. For this purpose, we match patent records to firms in Cerved, identifying 13,904 Italian companies that had filed for patents.

For all patents, we extract information on their patent families, technology classification, application date, grant status, number of claims, backward and forward citations. This data allows us to construct various patent-based innovation measures for firms. In particular we focus on: (i) yearly patent counts by firms; (ii) citations-adjusted patent counts to reflect quality heterogeneity across patents; and (iii) family-size-adjusted patent counts. Patent family size can serve as another proxy for patent quality as it may indicate the extent of geographical protection an applicant is seeking. We report the details of the PATSTAT matching, as well as summary statistics of these measures, in Appendix A.3.

Dataset #4: Registry of Local Politicians (RLP)

We obtain administrative data on local politicians (RLP) from the website of the Ministry of the Interior. RLP contains information on all local politicians at the municipal (8,110 municipalities), provincial (103 provinces) and regional (20 regions) levels from 1985 to 2014. For each individual, we have his/her detailed demographic information, location, position (e.g., council member, mayor, regional president, vice-president, etc.), and appointment date. The data contains information on 515,201 unique politicians during our benchmark period of 1993-2014.

In order to link individual politicians to the Social Security data on private-sector employees, we recover social security numbers from the demographic information on politicians. Next, we define an individual's *majority affiliation* – whether a politician is a member of a majority party (or a coalition) at the local level. Finally, based on politician's position attributes, we identify a politician's *regional rank* (e.g., municipality, province, or region). Similarly, we identify his/her *hierarchical rank* (i.e., mayor, president, vice-president, etc.). Appendix A.3.1 reports the details on data cleaning and variable construction in RLP.

Table 2 reports some summary statistics on local politicians. In our data, most of the politicians (96.6%) work at the municipal level. Around 11.3% of the politicians have high-rank positions (e.g., mayor, president, vice-mayor or vice-president) and an additional 19.6% have executive roles (“assessore”). Finally, 73% of the politicians are part of the majority party or coalition. Characteristics on politicians that are employed in the firms are shown in Table A.3. Almost 10% of politicians hold top- or middle-management positions, while 55% perform other white-collar jobs.

⁸“EPO Worldwide Patent Statistical Database – 2016 Spring Edition”.

Table 2: STATISTICS ON LOCAL POLITICIANS

CATEGORY	POSITION	SHARE
<i>Regional Rank:</i>	Region	0.8%
	Province	2.6%
	Municipality	96.6%
<i>Hierarchical Rank:</i>	Mayor, President, Vice-mayor, Vice-president	11.3%
	Executive councilor	19.6%
	Council member	69.1%
<i>Majority Affiliation:</i>	Majority	73%

Notes: Summary statistics on the distribution of politicians across regional rank, hierarchical rank, and their local majority affiliation from the Registry of Local Politicians (RLP). Statistics are from the period between 1993 and 2014 with 2,888,480 observations on 515,201 distinct politicians.

Dataset #5: Elections Data

We derive data on elections at the regional, province, and municipality level from the Ministry of Interior and complement it with our own data collection from various sources online (online election archives, Wikipedia). The final data covers all local elections during the period 1993-2014. We have information on the identities of all the candidates (names and demographics); parties/coalitions participating in the elections and candidates that they support; votes obtained (for candidates or parties) in each election round, if multiple; and the allocation of seats in the councils.

This data serves two purposes. First, it helps complement majority party/coalition identification from RLP (and hence to define politician’s *majority affiliation* more accurately as described in details in Appendix A.3.2 and A.3.3). Second, and more importantly, we identify marginally contested elections and party affiliations of marginally winning or losing parties/coalitions as discussed in Section 5.1.

3.2 Descriptive Statistics

In this section, we describe various trends that we observe in the final matched data. We first start with some variable definitions.

We label a firm as being “connected at time t ” if at least one politician of a certain type is working in that firm in the same year t . Notice that our definition, more conservatively, is based on the contemporaneous employment relations.⁹ The main political connection indicators we use throughout the paper are:

- $Connection_{it} = 1$ if at least one politician is working in firm i at time t .
- $Connection\ high - rank_{it} = 1$ if at least one high-rank politician, defined as either mayor, region or province president, vice-mayor or vice-president, or a (vice-)president of a council, is working in firm i at time t .

⁹Interestingly, looking at the first time that a firm becomes connected, we observe that in the majority of the cases (63%) the firm becomes connected through a worker already employed in the firm, while in the remaining cases the politician gets hired by the firm (either moving from another firm, being a “professional politician”, or a self-employed/professional not enrolled in INPS.)

- $Connection\ majority_{it} = 1$ if at least one politician from the majority party/coalition at local level is working in firm i at time t .

Main summary statistics of the final matched dataset are reported in Table 3, Panel A. In total, we have about 32 million observations at the firm level, with 4 million unique firms in 1993-2014. Among these, 1 million firms match to Cerved, hence report their financial data. In total, 112,333 unique firms, at some point in their existence, can be identified as connected; conditional on being connected, the average number of politicians employed per year is 1.7.

Table 3: SUMMARY STATISTICS OF THE MATCHED FIRM-LEVEL DATA

PANEL A: Number of Observations						
	ALL FIRMS			WITH BALANCE SHEET		
Years	1993-2014			1993-2014		
Observations (firms \times year)	32,776,800			7,292,069		
Unique firms	4,432,111			1,028,063		
Observations (firms \times year), connected firms	449,236			270,843		
Unique firms ever-connected	112,333			64,612		
Variable	Mean	Median	St dev	Mean	Median	St dev
PANEL B: Variables from INPS (Data #1)						
Employment	7.223	2.000	129.005	18.481	5.000	213.193
Average weekly pay, thous. €	0.357	0.346	3.545	0.440	0.415	0.388
Employment growth	0.125	0.000	0.782	0.069	0.000	0.633
PANEL C: Variables from Cerved (Data #2)						
Assets, thous. €	-	-	-	3198.352	768.080	8171.213
VA growth	-	-	-	0.167	0.016	0.800
LP growth	-	-	-	0.098	-0.018	0.686
TFP growth	-	-	-	0.064	-0.020	0.554
PANEL D: Variables from PATSTAT (Data #3)						
Num. patents (yearly)	2.113	1.000	5.028	2.114	1.000	5.042
Num. family-size-adj. patents (yearly)	11.304	5.000	28.183	11.361	5.000	27.979
Num. citations-adj. patents (yearly)	4.286	1.000	21.657	4.229	1.000	20.606
PANEL E: Variables from the Registry of Local Politicians (Data #4)						
Connection	0.014	0.000	0.119	0.035	0.000	0.183
Connection high-rank	0.002	0.000	0.040	0.004	0.000	0.059
Connection majority	0.008	0.000	0.090	0.020	0.000	0.138
Num. politicians (cond on employing)	1.759	1.000	6.841	1.780	1.000	6.947
Num. majority-politicians (cond on employing)	0.896	1.000	3.517	0.892	1.000	3.623
Num. high-rank politicians (cond on employing)	0.152	0.000	0.882	0.132	0.000	0.860

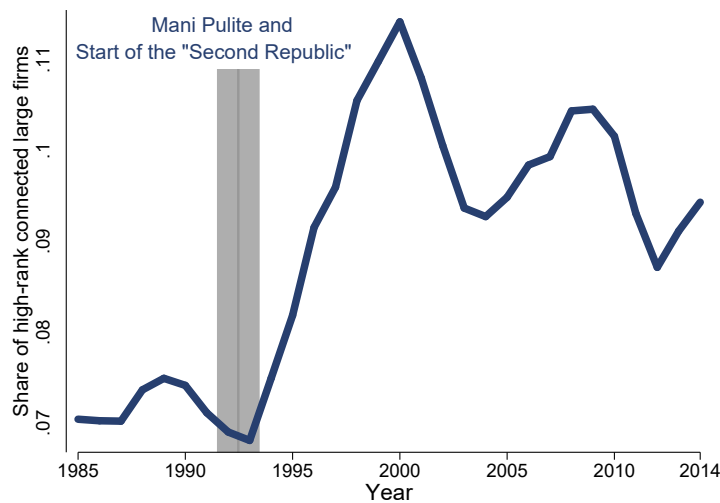
Notes: Summary statistics of the matched data at the firm \times year level. The columns under "All firms" report statistics for all firms at INPS that are in our largest baseline sample. The columns "With balance sheet" present statistics for all observations where balance sheet information is not missing (observations matched to Cerved). All nominal variables are expressed in thousands of 2014 Euros. Employment is defined based on the number of employees in March. Employment growth is defined as in (14). The "All firms" sample includes also firms that report zero employment in a particular year but still appear in INPS data. Number of observations with non-zero employment is 27,982,454 (employment growth excluding zero-employment observations is significantly lower, so a bulk of positive growth comes from entry years). Average weekly pay is the average gross weekly pay of all workers employed in March. Patent-related variables are defined in Section 3.1. The statistics on number of patents are given conditional on patenting. Definitions of Connection, Connection high-rank, and Connection majority are given in Section 3.2. The statistics on number of politicians employed are given conditional on having a connection. Standard balance sheet variables are defined in Section 3.1.

3.2.1 Firm-level Political Connections in Italy

Even if the core of our analysis is based on the 1993-2014 period, data on politicians is available back to 1985; looking at the evolution of political connections since then uncovers some interesting insights from recent Italian history.

Figure 1 plots the evolution of high-rank connections among large firms – a sample more relevant for political connections, especially with key politicians. Interestingly, there is a permanent shift in the level of high-rank connections around mid-1990s. Incidentally, this corresponds to a famous historical episode, when the biggest corruption scandal, known as Mani Pulite (“Clean Hands”), or Tangentopoli (“Kickback City”), hit the scene.

Figure 1: SHARE OF HIGH-RANK CONNECTED LARGE FIRMS



Notes: This figure plots the average share of firms that are politically connected with high-rank politicians among large firms with more than 100 employees over time. See Section 3.2 for the definition of high-rank connection.

In February 1992, the investigation into Mani Pulite started in Milan, with the arrest of Mario Chiesa, a socialist manager of a public hospice, and subsequently widened to the entire country and saw a huge increase in the number of involved politicians, bureaucrats, and entrepreneurs. In a few years, six former prime ministers, more than five hundred members of Parliament, and several thousand local and public administrators were involved in the investigations (Vannucci, 2009). Mani Pulite uncovered a dense network of corruption and bribery throughout Italy. As a result, Italian parties were completely disrupted, leading to a big change in the political arena. Within a year of the start of the investigation, many leading political figures had resigned or went into exile; the major parties disappeared or were completely transformed, with new parties being founded in their place.

A possible reason for the post-Mani Pulite growth in the number of political connections could lie in the radical change in the political class that followed the “Mani Pulite” scandal, which has, in fact, delineated the transition from the First (1946-1993) to the Second Republic (since 1993).¹⁰

¹⁰In 1993, there was a popular referendum that led to the abolition of the proportional electoral system that character-

One of the peculiarities of the transition to the Second Republic was the replacement in the political arena of the so-called “professional politicians” with political newcomers, most of whom came from the business sector (Mattozzi and Merlo, 2008).¹¹

We interpret this picture as a smoking gun for a regime shift from a more “under the table” relationship between firms and politicians involving corruption and bribes¹², towards a more formal “moonlighting” relationship. Indeed, this shift corresponds to the period in which high-rank politicians – including mayors, presidents, vice-mayors, and vice-presidents – acquired greater decision-making power, and hence, could be considered more valuable for firms. In fact, since the 1990s, a few reforms were enacted to shift towards a federal government, in which spending and decision-making centers would move from the highest levels, the central state, to the more local ones, with the idea of “getting closer” to the citizens.

A change in the electoral rule towards a majority system in 1993 pledged the emergence of an effective alternation in government of competing coalitions and the almost direct electoral investiture of the Prime Minister. Since 1997, a series of reforms have conferred more functions and more autonomy to the regions, provinces, and municipalities, so as to culminate in a reform of the Constitution in 2001. According to the Article 114 of the Italian Constitution, modified in 2001, “The [Italian] Republic is made up of Municipalities, Provinces, Metropolitan Cities, Regions, and the State. Municipalities, Provinces, Metropolitan Cities and Regions are autonomous entities with their own statutes, powers and functions”.

In this system, in addition to the central government (two houses of parliament, the central government, and the prime minister), each geographical entity (8,110 municipalities, 103 provinces, and 20 regions) has its own local government, with both a legislative and an executive branch, as well as a head of the executive (mayor, president of province, and president of region, respectively). Each of these different levels of government has authority over and responsibility for the provision of local public goods and services, administrative authority over the issuing of permits and licenses, and some power to set up rates for certain categories of taxes. The regions were given financial autonomy to decide freely how to spend their money, and organizational autonomy to decide how many councilors to have and how much to pay them.¹³

This short excursus of two decades of Italian history is necessary to understand the roots of local political power and how, after a series of events, it has increased; for this reason, the links between entrepreneurship and politics have evolved and possibly strengthened over time.

ized the First Republic and to its substitution by a quasi-majoritarian system.

¹¹In March 1994, national elections were held: those elections saw a major turnover in the new parliament, with 452 out of 630 deputies and 213 out of 315 senators elected for the first time.

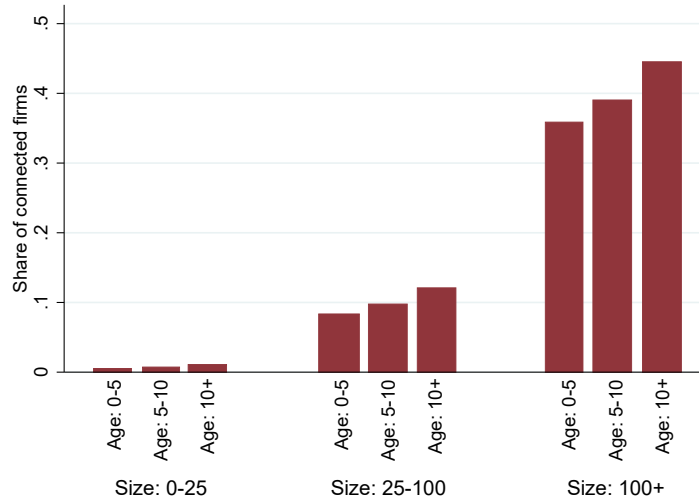
¹²The estimated value of bribes paid annually in the 80’s by Italian and foreign companies bidding for large government contracts reached 4 billion dollars (Koff, 2002).

¹³Although the 1948 Constitution directly granted even the non-Special Statute Regions legislative powers for limited matters, such as agriculture, public works, tourism and urban planning, the regions were a little more than paper entities (Del Duca and Del Duca, 2006). In other words, the regions had no power to impose taxes and they depended only on the State revenue sharing.

3.2.2 Firm-level Connections and Industry Dynamics

Firm-level connections are a widespread phenomenon. While the average share of connected firms by industries is around 4.5%, connected firms account for 33.6% of employment across industries. In our data, some of the sectors with the highest share of connected firms are utilities, pharmaceuticals, banking, waste disposal, telecommunications, and others. On the opposite side, industries with the lowest share of connected firms are in personal services, bars, restaurants, retail management, restoration, and others. Connections are particularly common among large firms. As Figure 2 shows, larger firms are disproportionately more likely to be connected: 45% of firms with more than 100 workers are connected with politicians. Conditional on size, age matters as well: older firms are significantly more likely to have political connections than younger firms.

Figure 2: SHARE OF CONNECTED FIRMS BY SIZE AND AGE



Notes: The figure shows share of connected firms by age and size bins.

This establishes our first stylized fact:

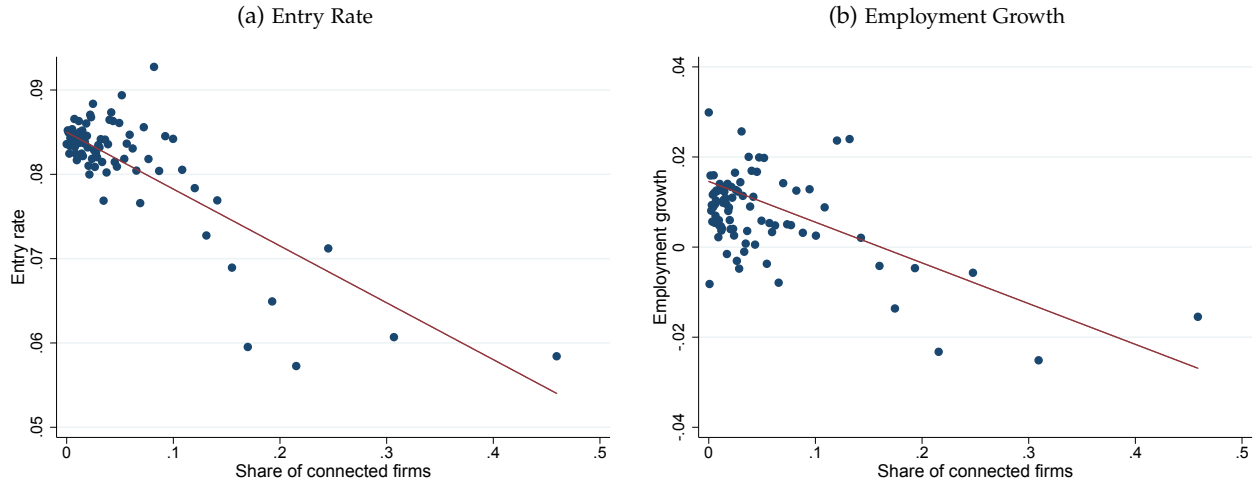
Fact 1. *Firm-level political connections are widespread, especially among large and old firms.*

Political connections might have important implications for the aggregate industry dynamics. If political connections slow down competition, industries with connected firms may feature lower business dynamism, face lower firm entry and reallocation, be dominated by larger or older firms and, as a result, might have lower productivity and growth. In this section, we provide descriptive statistics at the industry and regional level consistent with these conjectures.

First, we explore empirically if markets with higher political presence show lower signs of business dynamism. We define market at the industry \times region \times year level and for each market, we compute the share of connected firms, firm entry rates, and total employment growth (to the next period) series. We then regress entry and growth rates on the share of connected firms, controlling for year, industry, and region fixed effects. Figure 3 plots binscatters from these regressions, where each dot represents outcome variables adjusted for fixed effects. Regressions are weighted

by number of firms in each market. The results show that markets with higher political presence, on average, have lower entry of new firms – Panel (a), and grow less – Panel (b).

Figure 3: CONNECTIONS, ENTRY, AND GROWTH



Notes: Each outcome variable at the industry \times region \times year level is regressed on the share of connected firms, controlling for industry, year, and region fixed effects. Each dot represents the adjusted outcome variable, namely the outcome from which we subtract all covariates (except the share of connected firms) times their estimated coefficients. Regression lines are depicted in each panel. Regressions are weighted by number of firms in each industry \times region \times year. The x-axis is divided into 20 quantile bins and each dot represents average value within that bin. In Panel (a), the outcome is entry rate of new firms. Panel (b) considers aggregate employment growth to the next period.

We quantify these relationships in Table 4 and, in addition, consider other measures for business dynamism: productivity, share of young firms, and share of small firms. We find that more politically connected markets are less productive, have a lower share of young firms and are dominated by large firms – a clear signal of a lower degree of creative destruction. Interestingly, conditional on entry, in those markets that are more populated by connected firms, new firms tend to start off with connections, as evident from the last column of the table. In connected markets, in order to compete with incumbents, entrants might need to seek for protection before entering the market. However, we cannot exclude that other time-variant factors at the market level that led incumbents to resort to political connections could also make entrants do the same.

Even if these relationships cannot be interpreted as being causal, our results show a strong and negative correlation between our measures of connections and business dynamism in Italy. We summarize our results in the following stylized facts:

Fact 2. *More connected markets face lower firm entry, but conditional on entry, entrants are more likely to be connected than in other industries.*

Fact 3. *Markets with a higher share of politically connected firms have a lower share of young firms and exhibit lower employment growth and productivity.*

Table 4: Connections and Industry Dynamics

<i>Panel A</i>						
	Growth	Log LP	Share young	Share small	Entry rate	Share conn. entry
Share of connected firms	-0.243*** (0.0183)	1.961*** (0.106)	-1.597*** (0.0241)	-3.067*** (0.0274)	-0.494*** (0.0101)	0.348*** (0.00479)
Observations	34214	33569	36049	36049	35857	30412
<i>Panel B</i>						
	Growth	Log LP	Share young	Share small	Entry rate	Share conn. entry
Share of connected firms	-0.0980*** (0.0289)	-1.243*** (0.114)	-0.290*** (0.0215)	-0.992*** (0.0180)	-0.0309*** (0.0114)	0.234*** (0.00900)
Year FE	YES	YES	YES	YES	YES	YES
Region FE	YES	YES	YES	YES	YES	YES
Industry FE	YES	YES	YES	YES	YES	YES
Observations	34214	33569	36049	36049	35857	30411

Notes: Table reports the coefficients from OLS regressions at the industry \times region \times year level of various industry moments on the share of connected firms (share of connected incumbents in the case of columns 5 and 6). Columns list various outcome variables: 1) industry growth; 2) industry productivity; 3) share of firms younger than 5 years old; 4) share of small firms (<5 workers); 5) entry rate of new firms; and 6) share of connected firms among entrants. Panel A reports regressions without any additional controls, while Panel B includes year, region, and industry fixed effects. Regressions are weighted by number of firms in each industry \times region \times year to weight more representative markets more heavily. Standard errors are in parentheses. * $p < 0.1$, ** $p < 0.05$, *** $p < 0.01$

4 Firm-level Empirical Analysis

In this section, we present results from the micro analysis at the firm level.

4.1 Leadership Paradox: Market Rank, Political Connections, and Innovation

How does market leadership influence a firm's growth strategy? One possibility could be that the firms might produce new innovations and extend their market lead that way. An alternative would be to defend their lead against their competitors. This latter strategy might include connecting to the political system. In this section, we study this issue more systematically.

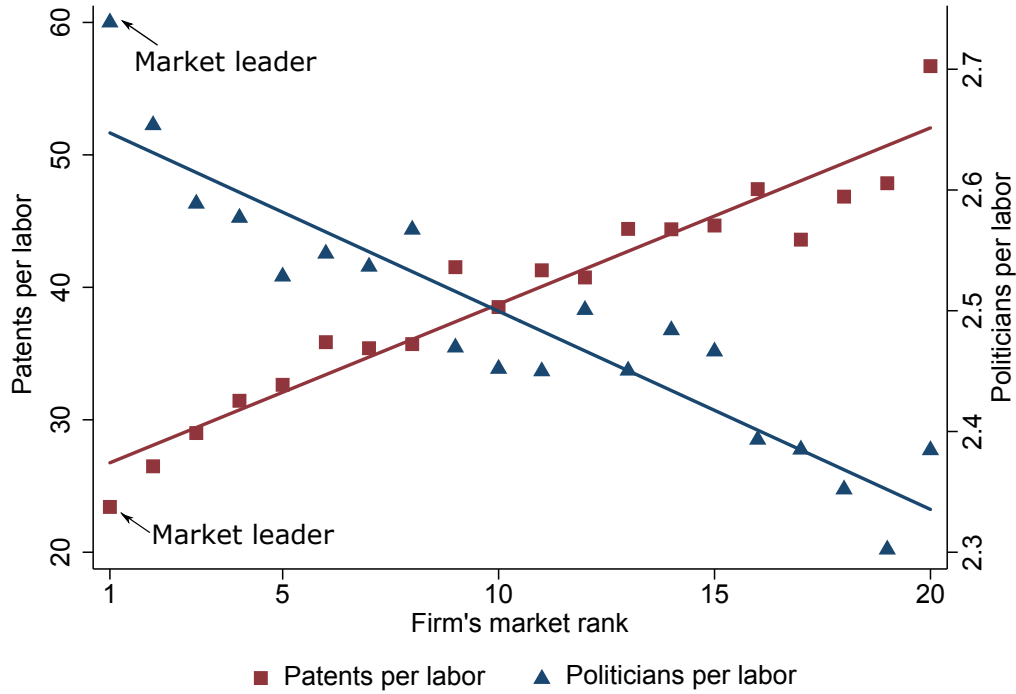
We rank each firm based on its employment share in a market, where market is defined at the (6-digit) industry \times region \times year level.¹⁴ We then zoom in on the top 20 firms across markets and plot various measures of political connections and of innovation over firm's market rank.

Figure 4 shows the relationship between politician intensity and innovation intensity over a firm's market rank. We measure politician intensity (blue triangles) as the number of politicians employed in a firm, normalized by 100 white-collar employees. We measure innovation intensity (red squares) as the number of patent applications in a year, normalized by 100 white-collar employees. Both outcome variables are adjusted for industry, region, and year fixed effects. The blue and red lines depict regression lines from regressing politician intensity and innovation intensity,

¹⁴Defining market by industry, excluding regional dimension leads to similar results.

respectively, on market rank, controlling for industry, region, and year fixed effects. We observe that market leaders – the largest firms – are the most politician-intensive, but also the least patent-intensive.

Figure 4: LEADERSHIP PARADOX: MARKET RANK, INNOVATION, AND POLITICAL CONNECTION



Notes: Figure plots politician intensity and innovation intensity over firm's market rank for top 20 firms in the markets. Market is defined at (6-digit) industry \times region \times year level. Markets in which top 1 firm holds less than 10% share are excluded. Politician intensity (blue triangles) is the number of politicians employed in a firm normalized by 100 white-collar employees. Innovation intensity (red squares) is the number of patent applications in a year normalized by 100 white-collar employees (conditional on patenting). Both outcome variables are adjusted for industry, region, and year fixed effects. The blue and red lines depict regression lines from regressing politician intensity and innovation intensity, respectively, on market rank, controlling for industry, region, and year fixed effects.

This “leadership paradox” is robust to alternative specifications. Appendix Figure B.1 presents a similar figure, but with alternative measures of politician and innovation intensities. There, we measure politician intensity as the number of majority-party politicians employed in a firm, normalized by 100 white-collar employees, and innovation intensity as intangible assets over a firm's value added. Again, politician and innovation intensities go in the opposite direction with market rank.

In line with Figures 4 and B.1, Appendix Table B.1 shows coefficients from OLS regressions of various measures of connection and innovation intensity on market rank dummies, conditional on year, industry, and region fixed effects. Innovation intensity monotonically declines, while politicians intensity monotonically increases with market rank. Age turns out to be a crucial factor, too: older firms are less innovation intensive, but more politician intensive. In the Appendix, we show that the observed relationship between innovation and connections intensity over market rank is ro-

bust to alternative definition of market share. Appendix Figure B.2 plots similar figures over market rank, based on value added. In addition, Appendix Figure B.3 illustrates that negative relationship between innovation intensity and market rank is also robust, if we consider quality-adjusted patents, where quality is measured by 5-year patent citations or patent family size. Interestingly, this means that a reduction in the quantity of innovation by market leaders is not offset by a better quality of innovation.

These results on innovation are consistent with earlier findings on U.S. firms: using U.S. Census data, Akcigit and Kerr (2018) show that larger firms are less innovation-intensive and come up with less impactful innovation. Hence, an observation that large firms and market leaders are less innovative is perhaps less surprising but what characterizes these firms is that they rely more on political connections.

Fact 4. *Market leaders are the most politician-intensive but the least innovation-intensive, relative to their direct competitors.*

4.2 Political Connections and Firm Survival

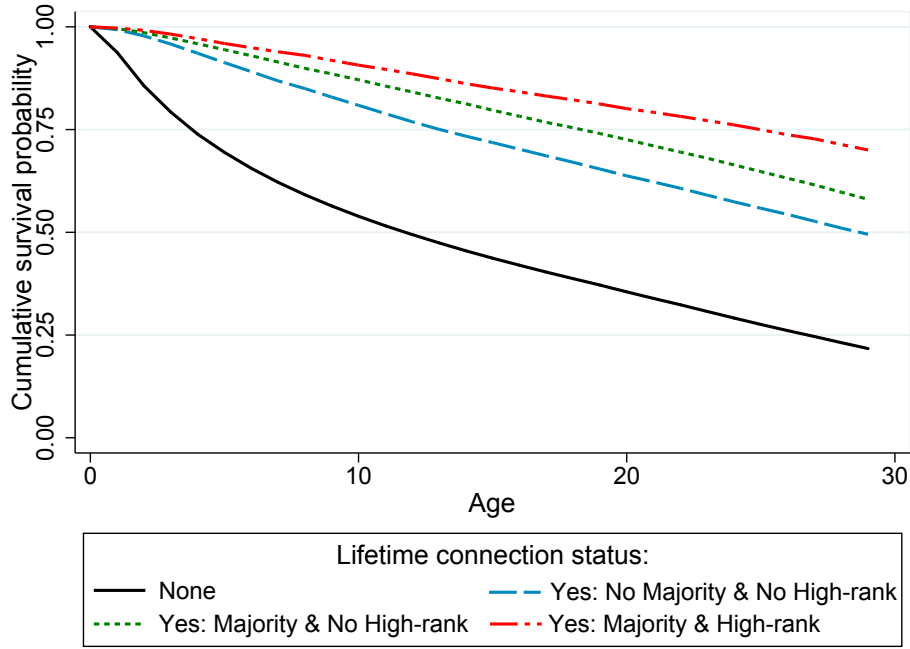
Next, we explore what kind of outcomes at the firm level are associated with (or driven by) political connections. Since finding and retaining connections should be costly (indeed, in Section 6, we will show that firms provide significant wage premiums to worker-politicians, especially those in high-rank positions), we would expect that connected firms acquire certain benefits.

In the data, differences in survival probabilities of firms with different connection statuses are large. To illustrate this, Figure 5 presents Kaplan-Meier survival estimates splitting the sample of firms based on their connection status over the lifecycle. Different curves plot cumulative survival probabilities of firms that have never been connected; that have been connected, but never with a majority-level or a high-rank politician; that have at some point been connected with a majority-level politician but never one with a high-rank; and that have been connected with both majority-level and high-rank politician at some point in their life. We see that these survival probabilities monotonically increase with the strength of connections that firm has established.

These differences might be driven by the fact that connected firms are also larger, and large firms are both more likely to be connected and more likely to survive. To address this concern, we conduct a parametric Cox survival analysis on all firms in our sample. Table 5 reports the results. The main explanatory variables for a firm's survival are connection dummy (column 1), majority-level dummy (column 2), and high-rank connection dummy (column 3). The model also controls for a firm size, a firm's market share, and year and industry dummies.

Conditional on observables, firms that are connected have lower hazard and therefore they survive longer. Survival time increases even further if a firm is connected with a majority-level or a high-rank politician. Relative to non-connected firms, firms that are connected with high-rank politicians experience a 0.275 decline in yearly log hazard rate, while connections with a majority-level politician is associated with a 0.109 decline in yearly log hazard rate. This brings us to our next stylized fact.

Figure 5: SURVIVAL ESTIMATES BY CONNECTION STATUS



Notes: Kaplan-Meier Survival estimates by maximum level of connections over the lifetime of a firm. Black curve denotes firms that have never been connected with a politician; blue curve – firms that have been connected but never with a politician from a majority party or a high-rank politician; green curve – firms that have been connected with a politician from a majority party but never with a high-rank politician; red curve – firms that have been connected with a high-rank politician. See Section 3.2 for the definitions of high-rank and majority politicians.

Fact 5. *Politically connected firms are more likely to survive, and their survival probability increases in the political power of the politicians they employ.*

4.3 Political Connections and Firm Growth

Do political connections help firms grow? Do firms use their political connections to push the technology frontier? The answers to these questions could shed some light on the two alternative hypothesis that connections are useful for or detrimental to technological progress. If firms use their connections to push the frontier, employment growth should be coupled with productivity growth. Alternatively, if political connections are used to gain certain types of preferential treatment or to directly eliminate competition, the freed-up workers from competitors would be reallocated to the connected firms. However, such growth in employment would be detached from growth in productivity.

In Tables 6 and 7, we run the following regressions:

$$y_{it} = \beta_0 + \beta_1 \text{Connection}_{it} + \beta_2 \text{Connection majority}_{it} + \zeta \mathbf{x}_{it} + \eta \mathbf{x}_t + \gamma \mathbf{x}_i + \varepsilon_{it} \quad (1)$$

where y_{it} is a firm i 's growth from t to $t + 1$. The main explanatory variables Connection_{it} and $\text{Connection majority}_{it}$ are dummy variables defined in Section 3.2. \mathbf{x}_{it} includes time-varying firm-

Table 5: COX SURVIVAL ANALYSIS

	Exit	Exit	Exit
Connection	-0.088*** (0.009)	-0.059*** (0.013)	-0.067*** (0.010)
Connection major		-0.050*** (0.019)	
Connection high-rank			-0.208*** (0.033)
Log Size	-0.415*** (0.001)	-0.413*** (0.001)	-0.415*** (0.001)
Log market share	-0.024*** (0.0008)	-0.024*** (0.0008)	-0.024*** (0.0008)
Year FE	YES	YES	YES
Industry FE	YES	YES	YES
Observations	25,773,082	25,842,288	25,773,082

Notes: Cox proportional hazard model of firm survival as a function of connection status at a point in time. Definitions of *Connection*, *Connection major* and *Connection high-rank* are given in Section 3.2. Other controls are *Log Size*, *Market Share* – defined as share of a firm’s employment in industry \times region \times year – and year and industry dummies. Efron method for tied failures is used. * $p < 0.1$, ** $p < 0.05$, *** $p < 0.01$

level controls – log total assets, log size (employment), and age. x_t includes time dummies, while x_i includes a firm’s region and industry dummies for columns 1 and 3, and firm fixed effects for columns 2 and 4.

Column 1 of Table 6 reports employment growth regression, controlling for firm’s assets, size, age, as well as year, region, and industry fixed effects. The results show that connected firms grow 3 percentage points faster, on average. Being connected to a majority party is associated with an additional 0.3 percentage point employment growth. Column 2 shows similar coefficients using identification within firms, including firm fixed effects. Columns 3 and 4 show that connected firms grow 1 to 4 percentage point faster in value added.

These results indicate that firms that are getting connected expand in terms of size and revenue. However, this growth is not accompanied by a corresponding growth in these firms’ productivity. Columns 1 and 2 of Table 7 show similar regressions to the corresponding columns of Table 6 but for the growth of labor productivity. Columns 3 and 4 repeat the same analysis for total factor productivity growth. We see that connections are associated with a weak decline in productivity growth, while connections with majority-level politicians are not significant.

Overall, these results tell us that political connections are associated with positive growth in size, but not in productivity. Appendix Table B.2 summarizes these opposing results but extends the analysis to other dependent variables. Panel A looks at growth in size – employment, white-collar employment, value added, and profits. Connections positively affect all these variables. On the other hand, in Panel B, connections are associated negatively with future growth in productivity measures – labor productivity, TFP, intangibles share, or patents growth.

A major concern with these regressions is a potential endogeneity of the political connections. Therefore, we perform a regression discontinuity analysis in the next section. We conclude this

Table 6: CONNECTIONS AND FIRM GROWTH

	Empl growth (OLS)	Empl growth (FE)	VA growth (OLS)	VA growth (FE)
Connection	0.032*** (0.001)	0.040*** (0.002)	0.039*** (0.002)	0.014*** (0.002)
Connection major	0.003* (0.001)	0.007*** (0.002)	0.010*** (0.002)	0.002 (0.002)
Log Assets	0.065*** (0.000)	0.203*** (0.001)	0.036*** (0.000)	-0.091*** (0.001)
Log Size	-0.077*** (0.000)	-0.384*** (0.001)	-0.080*** (0.000)	-0.235*** (0.001)
Age	-0.002*** (0.000)	-0.011*** (0.000)	-0.004*** (0.000)	-0.005*** (0.000)
Year FE	YES	YES	YES	YES
Region FE	YES	NO	YES	NO
Industry FE	YES	NO	YES	NO
Firm FE	NO	YES	NO	YES
Observations	6,545,131	6,585,740	5,684,519	5,710,338

Notes: Firm-level OLS regressions. Dependent variable in columns 1 and 2 is employment growth from time t to time $t + 1$ as defined in equation 14. Dependent variable in columns 3 and 4 is value added growth from time t to time $t + 1$. Main variables of interest are *Connection* – a dummy variable equal to one if the firm is connected with a politician, and *Connection major* – a dummy equal to one if the firm is connected with a majority-member politician at time t . The regressions, in addition, control for a firm’s assets, size, age, as well as year, region, and industry fixed effects in columns 1 and 3; and for year dummies and firm fixed effects in columns 2 and 4. Robust standard errors clustered at firm level reported in parentheses. * $p < 0.1$, ** $p < 0.05$, *** $p < 0.01$.

section by summarizing our findings:

Fact 6. *At the firm level, political connections are associated with higher employment and revenue growth, but not with productivity growth.*

5 Causal Inference

In the spirit of Lee (2008), we exploit a quasi-random discontinuity caused by local elections decided on a thin margin to gauge the causality of our firm-level results. The idea behind this method is to compare the post-election performance of two different firms that were politically connected to different competing parties right *before* a marginally-contested election. Since the outcomes of closely contested elections can be considered as pure chance, discontinuity in outcomes between marginally winning and losing firms *after* the election can be attributed to a causal effect of majority-level connections on firms’ outcomes. Before we go into the details of the methodology, it is useful to describe the institutional setting of the Italian local elections and the identification of closely contested elections in our data.

5.1 Institutional details on elections.

Elections at the municipal level. Local elections are typically held every five years, and voters are asked to choose a mayor and members of the local council. There are around 8,100 municipalities in Italy,

Table 7: CONNECTIONS AND FIRM PRODUCTIVITY GROWTH

	LP growth (OLS)	LP growth (FE)	TFP growth (OLS)	TFP growth (FE)
Connection	-0.014*** (0.002)	-0.028*** (0.002)	-0.008*** (0.001)	-0.019*** (0.002)
Connection major	-0.001 (0.002)	-0.004 (0.003)	0.000 (0.002)	-0.003 (0.002)
Log Assets	-0.028*** (0.000)	-0.274*** (0.001)	-0.001*** (0.000)	-0.106*** (0.001)
Log Size	0.021*** (0.000)	0.274*** (0.001)	-0.006*** (0.000)	0.125*** (0.001)
Age	-0.001*** (0.000)	-0.002*** (0.000)	-0.001*** (0.000)	-0.003*** (0.000)
Year FE	YES	YES	YES	YES
Region FE	YES	NO	YES	NO
Industry FE	YES	NO	YES	NO
Firm FE	NO	YES	NO	YES
Observations	5,598,367	5,623,077	5,271,002	5,291,979

Notes: Firm-level OLS regressions. Dependent variable in columns 1 and 2 is labor productivity (value added per labor) growth from time t to time $t + 1$. Dependent variable in columns 3 and 4 is TFP growth from time t to time $t + 1$. TFP is calculated using Cobb-Douglas specification where capital is measured as total assets, labor is given by employment level from INPS, and labor share is taken equal to average industry-level labor share from the data. Main variables of interest are *Connection* – a dummy variable equal to one if the firm is connected with a politician, and *Connection major* – a dummy equal to one if the firm is connected with a majority-member politician at time t . The regressions in addition control for firm's assets, size, age, as well as year, region, and industry fixed effects in columns 1 and 3; and for year dummies and firm fixed effects in columns 2 and 4. Robust standard errors clustered at firm level reported in parentheses.

* $p < 0.1$, ** $p < 0.05$, *** $p < 0.01$.

with populations ranging from 100 inhabitants to 3 million inhabitants. Electoral law could have some size-dependent nuances across municipalities.

Elections generally take place through the “one-shot” voting mechanism with a majoritarian system for both the mayor and the council members. Votes are cast both for mayor candidates and the parties that support those candidates.¹⁵ In large municipalities (population $> 15,000$), if no candidate gets an absolute majority, i.e., more than 50%, then the election goes to the second round. Votes cast for the candidates not only determine the identity of a mayor, but also determine the allocation of seats to parties with the candidates. Importantly, the winning candidate gets a majority premium, and hence his/her party/coalition is guaranteed to have a majority of the seats on the council.¹⁶ After determining the total allocation of seats to a winning coalition, the further allocation of seats within a winning coalition or outside of it is determined by the votes cast for each party.

Elections at the provincial level. Elections are normally held every 5 years, and voters choose the president of the province and the council composition. Electoral rules for province-level elections are very similar to the ones for large municipalities (population $> 15,000$) as described above.¹⁷

¹⁵In general, separate voting is not allowed, so that voters cannot pick candidates and parties from competing tickets, except in large municipalities.

¹⁶Specifically, 2/3 of the seats in smaller municipalities and at least 60% in larger municipalities.

¹⁷Major reform concerning province-level elections was enacted around 2014. The reform in essence removed province-level elections. The Budget Law for 2012 (L214/2011: Disposizioni urgenti per la crescita, l'equità e il consolidamento dei

Elections at the regional level. Regional elections are generally held every 5 years in the twenty regions of Italy. Before 1995, voters did not directly choose a regional president. Instead, they cast votes for parties/coalitions that formed a council. Allocation of seats between parties was based on a proportional system. However, since 1995, it is possible to cast votes for a presidential candidate, as well as for parties/coalitions forming a government (with lists running at district or regional level). There is no possibility of runoff. The coalition associated with a winning president is generally assured a majority of the seats in the government (at least 55%). The rest of the seats are determined by the number of votes cast for each party.¹⁸

Identifying marginally contested elections. Our detailed data allows us to identify elections that have been contested on a thin margin. As described above, votes cast for the candidates (not for parties) determine the margin of victory and the identity of a majority party/coalition in a particular election.¹⁹ In most cases, the minimum threshold of votes is 50%, and if that threshold is not reached by anyone, a runoff is expected. Important exceptions to the 50%-threshold are elections in small municipalities with a population below 15,000 inhabitants, as well as in regional elections. In such cases, a second round is never held and the winner is the one who receives the largest share of votes in the first round.

We identify the marginal elections as follows: let p_1 denote the share of votes obtained by a winner and p_2 the share of votes held by a runner-up. We define a *margin of victory* as the difference between the share of votes of the highest-share candidate (p_1) and of the second-highest share candidate (p_2) in a decisive round:

$$\text{margin of victory} \equiv p_1 - p_2.$$

There were 36,513 municipal elections during the 1993-2014 period. Out of those, 19,589 were decided within a 20% margin, 5,879 within a 5% margin, and 2,395 within a very narrow 2% margin. At the provincial level, 846 out of 1,162 elections were decided within a 20% margin, and 266 and 62 – within 5% and 2% margins, respectively.²⁰ This provides us with a large sample for our regression discontinuity analysis.²¹ Figure 6 shows the distribution of victory margins in our sample period. Appendix Figure B.4 shows that marginal elections have been geographically scattered all over Italy and there does not seem to be a particular geographic concentration.

conti pubblici) has laid the foundations for a provincial reform in Italy that came to an end in 2014 with the so-called Delrio Law (L56/2014). In the transitory regime, elections in the provinces of Como, Belluno, Vicenza, Genova, La Spezia, Ancona, and Caltanissetta e Ragusa were not held. As a result, in the transition period (2012-2014), many provinces did not hold scheduled elections. Instead, they extended the mandate of the incumbent politicians. Hence, in those cases, we impute results from the previous elections by extending the results to more than 5 years.

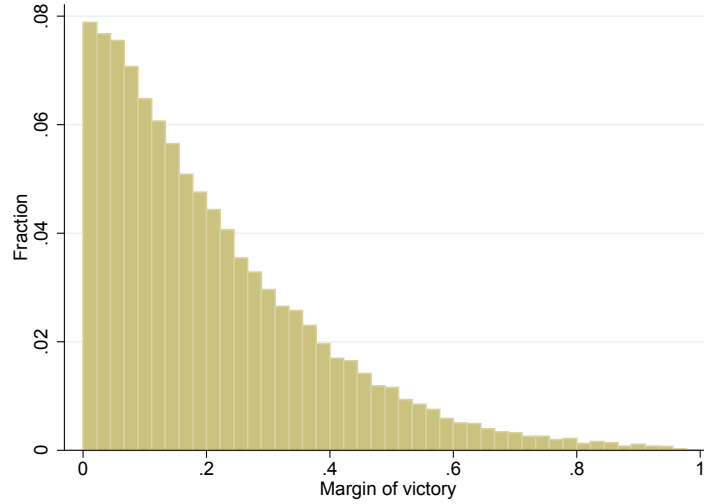
¹⁸Parties may decide to compete within district or regional lists, and this will have an effect on how the seats are allocated. However, in our data, we have information on the allocation of final seats, hence we do not need to work out all these details to determine how many seats a party/coalition got.

¹⁹We cannot define marginal elections for regional elections before 1995, as presidents were not chosen directly and seats were allocated proportionally based on votes for parties.

²⁰At the regional level, 62 out of 266 elections were decided within a 20% margin and 21 were decided within a 5% margin, and just 10 elections were decided within a 2% margin.

²¹For example, even for elections within 4% victory margin (for example, an election with 48%-52% outcome), we have more than 20 thousand RLP politicians for whom we have detailed party affiliation and social security information from INPS.

Figure 6: DISTRIBUTION OF ELECTIONS BY MARGINS OF VICTORY



Notes: Histogram plotting distribution of elections by their respective margins of victory. Margin of victory is equal to the difference between the share of votes received by a winning candidate minus the share of votes by a runner-up.

Random outcomes of marginal elections. Our identification strategy relies on the randomness of election outcomes when the margin of victory is close to zero. A threat to this randomness could come from incumbency advantage: we examine this possibility by looking at the re-election probability of incumbent parties. If the outcomes of close elections cannot be anticipated, then the odds of winning for an incumbent party/coalition should be the same as odds of non-incumbents. Figure 7 plots the probability of re-election – the share of elections won by an incumbent party as a function of the margin of victory. The sample contains all those elections (within the 20% margin) where an incumbent party/coalition is either a winner or a runner-up. We see that elections with a wide victory margin feature a large incumbency advantage in terms of re-election. However, closer to the zero margin of victory, the outcome of an election resembles a coin flip – an incumbent is exactly as likely to win as the other candidate.

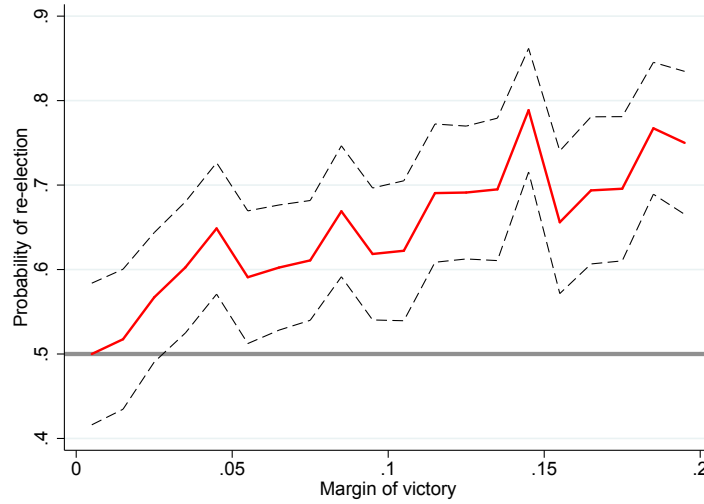
Another potential concern could be that our identification of treated and control groups in RD could be noisy if, in anticipation of a closely contested election, firms employ politicians from *both* competing parties. We check for this possibility in Figure 8, where, across firms, we plot the distribution of the share of winning politicians at firm i in the election held at time t . Share of winning politicians is defined as

$$\text{Share of winning politicians}_{it} = \frac{\text{Winning-party members}_{it-1}}{[\text{Winning-party members}_{it-1}] \cup [\text{Losing-party members}_{it-1}]}$$

and is simply the number of workers employed in a company i at $t - 1$ who were members of the winning party/coalition of the election in t , divided by the total number of politicians employed in i at $t - 1$. An interesting finding here is that only 4% of firms employ politicians from both competing parties simultaneously.²² We see that firms almost always “bet” only on one side of an

²²In the subsequent analysis, we drop those observations.

Figure 7: PROBABILITY OF RE-ELECTION AGAINST THE MARGIN OF VICTORY



Notes: Share of elections won by an incumbent party against the margin of victory in those elections. *Re-election* is equal to one if a winning party is the same (or shares at least one common party, in the case of coalitions) as an incumbent party/coalition that won the last election. Margin of victory is equal to the difference between share of votes received by a winning candidate minus the share of votes by a runner-up. The sample focuses on all the elections, where margin of victory is less than 0.2 and an incumbent party/coalition is either a winner or a runner-up.

election. While 75% of the firms employ only from the winning party, 20% of the firms employ only from the losing party.²³

5.2 Regression Specification

Now we are ready to describe our econometric specification. Let m denote an election that has been decided on a thin margin, $T(m)$ – the year in which it was held, $y_{iT(m)}$ – the outcome variable (e.g., firm i 's employment or labor productivity growth from $T(m)$ to $T(m) + 1$), winning dummy $Win_{iT(m)-1}$ – a dummy equal to one if firm i at time $T(m) - 1$ employs a politician from a party that wins the election m . We ultimately estimate the following relationship:

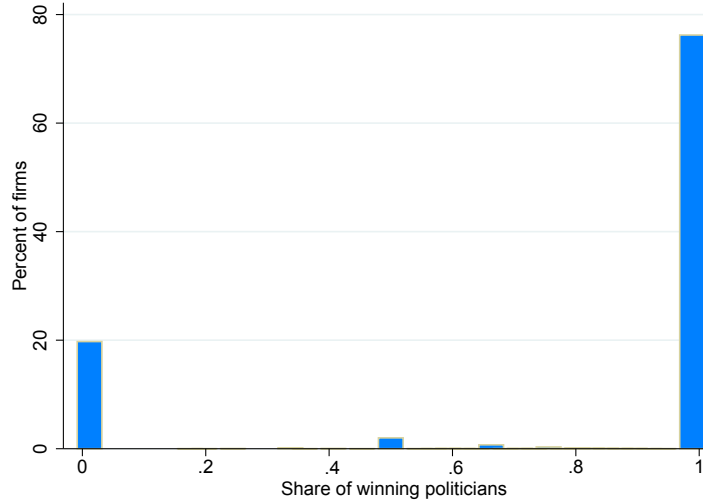
$$y_{iT(m)} = \alpha + \beta Win_{iT(m)-1} + f(\text{margin}_m) + \delta_1 X_{iT(m)} + \delta_2 X_m + \delta_3 X_T + v_{iT(m)}, \quad (2)$$

where $f(\text{margin}_m)$ is a third order polynomial function in margin of victory of election m estimated on both sides of the threshold (the polynomial and its interaction with winning dummy)²⁴, $X_{iT(m)}$ are firm-level controls, such as firm's age and size at time $T(m)$, X_m is a set of province dummies, X_T is a year dummy, and $v_{iT(m)}$ is the error term. Our benchmark specification includes $Win_{iT(m)-1}$ and $f(\text{margin}_m)$. When the assignment of treatment is random, our coefficient of interest β – the effect of winning at the margin – should be invariant to the inclusion of additional controls $X_{iT(m)}$,

²³Though it is tempting to infer from this figure that firms seem to anticipate election outcomes just because there is a larger mass at one than zero, as opposed to 50-50, it is not true. Recall from Table 2 that *Majority affiliation* is equal to one for 73% of observations in RLP. If every firm had employed only one randomly-chosen politician, by construction, we would have observed 73% of the firms at 1 and 27% at 0 in Figure 8.

²⁴The fourth or higher order terms in the polynomial are not significant. So, the third order polynomial is the best fit for our data.

Figure 8: DISTRIBUTION OF SHARE OF WINNING POLITICIANS ACROSS FIRMS



Notes: Figure shows distribution of firms over *share of winning politicians* in their companies in elections within 10% victory margin. We compute *share of winning politicians* in a company i as the number of workers employed in the company i at $t - 1$ who were members of the winning party of the election in t , divided by the total number of politicians employed in i at $t - 1$. We see that firms usually “bet” on one side of an election, and the share of firms employing politicians from the competing parties is very low.

X_m or X_T , since they should be orthogonal to treatment. We validate this assumption in Section 5.4 below and show our results with and without those additional controls.

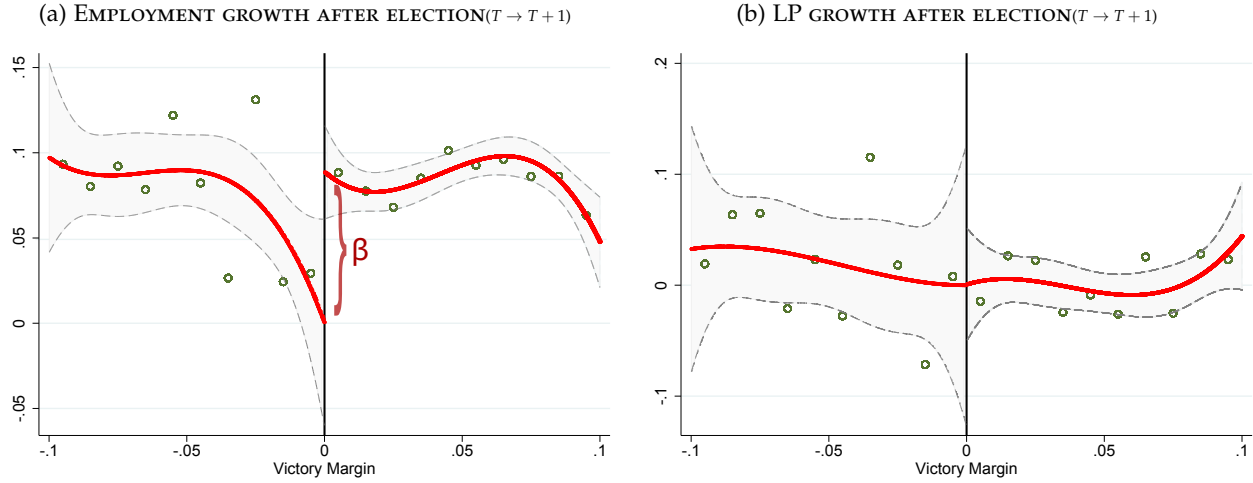
5.3 Results

We begin with a graphical analysis of RD in Panel (a) of Figure 9, where the outcome variable is firm-level employment growth. We plot a firm’s growth from T to $T + 1$ against margin of victory at time T . Positive margins of victory denote firms that have been connected at time $T - 1$ with a politician from a party that won an election at time T with a corresponding margin of victory. Likewise, negative margins of victory depict firms that are connected with losing politicians. The figure focuses on all the elections that were decided with no more than a 10% margin. For visibility, we divide the x -axis into 0.01-wide intervals of the margin of victory at time T . Each point denotes average growth of firms in that interval; the solid lines represent predicted third order polynomial fits²⁵ from a regression that includes third order polynomial in margin of victory, a dummy Win_{it-1} , and an interaction of the dummy with the polynomial (a regression in equation 2 that excludes additional controls). As a robustness check, we repeat the same plot for the elections within 5% victory margin in Appendix Figure B.5.

The discontinuity around 0%-victory margin generates a random assignment of who wins in T , and hence, provides an estimate of the causal effect of majority-level connections on the outcome variable. As seen from Panel (a), there is indeed a large positive gap in employment growth at the zero victory margin threshold. This confirms that the direction of causality in previous firm-level

²⁵Experimenting with other orders of a polynomial shows that results are not very sensitive. First and second order polynomials give slightly lower but statistically significant coefficients, while the coefficient with the fourth order polynomial is slightly higher.

Figure 9: EMPLOYMENT AND LABOR PRODUCTIVITY GROWTH AFTER AN ELECTION (<10% MARGIN)



Notes: Figure plots a firm's growth from T to $T + 1$ against margin of victory at time T . Positive margins of victory denote firms that have been connected at time $T - 1$ with a politician from a party that won an election at time T with the corresponding margin of victory. Likewise, negative margins of victory depict firms that are connected with losing politicians. For visibility, we divide the x -axis into 0.01-wide intervals of the margin of victory at time T , and each point denotes average outcome of firms in that interval. The solid lines represent predicted third order polynomial fits from the regression that includes third order polynomial in margin of victory, a dummy Win_{it-1} , and an interaction of the dummy with the polynomial (a regression in equation 2 that excludes additional controls). The dashed line represents 90% confidence intervals. Outcome variable in Panel (a) is employment growth, while in Panel (b) it is labor productivity growth. Figures are normalized such that outcome variables for marginal losers at the threshold are equal to zero.

regressions does (also) run from political connections to growth. An interesting observation is that for firms further away from the zero threshold, difference in growth rates is not sizable. This may indicate that firms connected with fierce competitors of barely winning candidates are performing worst. In addition, one can argue that marginal elections are quite different from standard elections – in tightly contested elections, connected firms on both sides may allocate significant financial resources before the elections, especially hurting post-election growth opportunities of losing firms. Another potential reason for the sizable negative impact on the marginal losers would be that in tightly contested elections, winners have an incentive to eliminate the opposition to secure their position for the next election.

RD plots also confirm a causal interpretation of firm-level results on labor productivity growth. Panel (b) of Figure 9 shows no effects of connections on productivity growth. As a robustness check, we again repeat the same plot for the elections within a 5% victory margin in Appendix Figure B.5.

We quantify these results in Table 8 more precisely. Columns 1 and 3 correspond to the above RD plots: regressions include winning dummy, Win_{it-1} , and $f(\text{Victory Margin})$ – third order polynomial in victory margin interacted with winning dummy. Coefficient on winning dummy is large and significant for employment growth, translating into a 9-percentage-point difference in growth rate, which is economically sizable. The effect on productivity growth is not statistically different from zero.

Table 8: EMPLOYMENT AND PRODUCTIVITY GROWTH AFTER ELECTION

	Empl Growth	Empl Growth	LP Growth	LP Growth
Win dummy	0.089** (0.0395)	0.079** (0.0383)	0.001 (0.0786)	-0.026 (0.0789)
Age		0.000 (0.0003)		-0.000 (0.0006)
Log Size		0.006* (0.0029)		-0.012 (0.0073)
f(Victory Margin)	YES	YES	YES	YES
Year FE	NO	YES	NO	YES
Province FE	NO	YES	NO	YES
Observations	11118	11076	6064	6055

Notes: OLS regressions of employment growth (columns 1 and 2) and labor productivity growth (columns 3 and 4) on winning dummy in an election at time T . Growth rates are defined from T to $T + 1$. We restrict attention to elections within 10% margin of victory. In the columns 1 and 3, regressions include winning dummy, Win_{iT-1} , and $f(\text{Victory Margin})$ – third order polynomial in victory margin interacted with winning dummy. Columns 2 and 4 include additional controls such as year and firm province fixed effects, log size and age. Regressions drop those firms that employ politicians from both of the two competing parties.

5.4 Tests for Quasi-Random Assignment

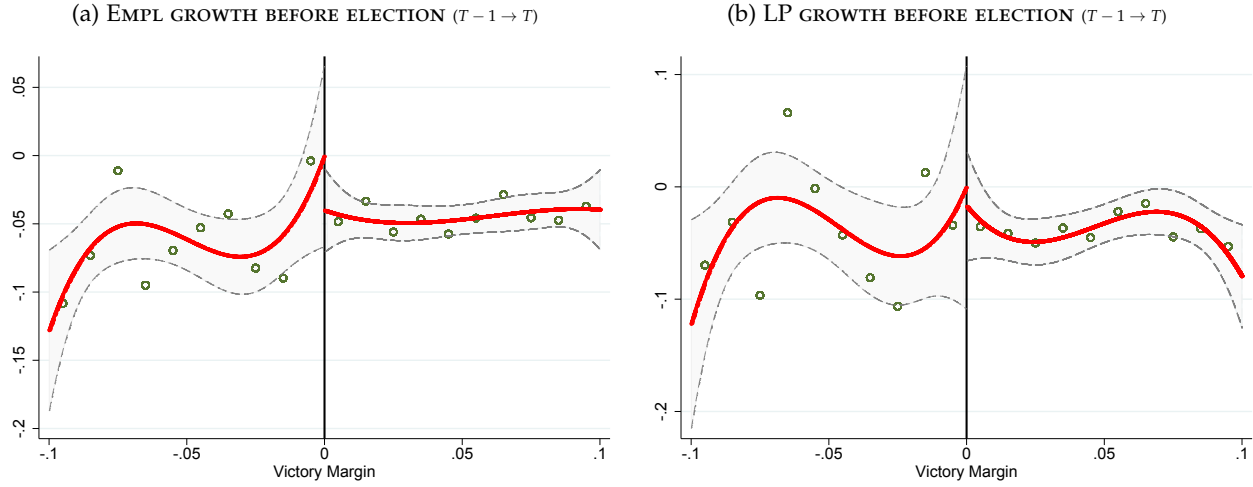
Additional controls. Our identification strategy relies on the assumption of the random assignment of the winner in marginally contested elections. This implies that marginally winning and marginally losing firms are very comparable and do not show systematic differences in pre-determined covariates. We provide some tests to support the quasi-random assignment in our RD design. First, the inclusion of additional covariates in the regressions ($X_{iT(m)}$, X_m , X_T in equation 2) should not change the main effect of the treatment. Indeed, after including additional controls, such as year and province fixed effects, log size and age in columns 2 and 4 of Table 8, we see that the magnitude of the main coefficients does not significantly change.

Pre-trends. Next, we examine the pre-trends in outcome variables. Figure 10 illustrates RD plots similar to the above plots, but for the employment growth and labor productivity growth at $T - 1$, right before the marginal elections. Panel (a) shows the result for employment growth and Panel (b) shows it for productivity growth. We see no significant difference in pre-elections growth rates at the threshold, which implies that the firms on the winning and losing sides do not show any systematic difference in main outcome variables prior to the election.²⁶

Balancing tests. Lastly, we show balancing tests for other pre-determined firm-level variables at time $T - 1$ in Table 9. Specifically, for the sample of tightly contested elections within 2% victory margin – where winning and losing firms should be ex-ante comparable – Panel A reports differences in time $T - 1$ variables between marginally winning and losing firms. The panel reports

²⁶As a robustness check, we again repeat the same plot for pre-trends using the elections within a 5% victory margin in Appendix Figure B.6.

Figure 10: PRE-TREND IN EMPLOYMENT AND LABOR PRODUCTIVITY GROWTH BEFORE AN ELECTION



Notes: Figure plots a firm's growth from $T - 1$ to T against margin of victory at time T . Positive margins of victory denote firms that have been connected at time $T - 1$ with a politician from a party that won an election at time T with the corresponding margin of victory. Likewise, negative margins of victory depict firms that are connected with losing politicians. For visibility, we divide the x -axis into 0.01-wide intervals of the margin of victory at time T , and each point denotes average outcome of firms in that interval. The solid lines represent predicted third order polynomial fits from the regression that includes third order polynomial in margin of victory, a dummy Win_{iT-1} , and an interaction of the dummy with the polynomial (a regression in equation 2 that excludes additional controls). The dashed lines represent 90% confidence intervals. Outcome variable in panel (a) is employment growth, while panel (b) depicts labor productivity growth. Figures are normalized such that outcome variables for marginal losers at the threshold are equal to zero.

coefficients on winning dummy from a basic regression of various variables reported in the columns on winning dummy, without introducing any additional controls. These results show that the treatment and control groups are comparable around the threshold in terms of firm size, value added, assets, intangible capital, labor productivity, profits, age, and geographic location.

One concern could be the low number of observations in this sample of tightly contested elections and hence, a weak statistical power. Therefore, Panel B uses all elections within a 20% margin and reports coefficients from the OLS regressions of the dependent variable represented in each column on the winning dummy and the third order polynomial in victory margin estimated on both sides of the threshold (similar to the benchmark RD regression specification that gives rise to Figure 9). Again, we do not see significant differences between the treated and control groups when the margin of victory is close to zero.

6 Politicians' Compensation

Do politician-workers earn any additional wage premiums relative to their co-workers? The Italian Social Security data allow us to tackle this question.

In the absence of any controls, we observe a 21% wage premium for politician-workers, relative to their co-workers in the same firm. Clearly, differences in worker characteristics and the types of jobs that they perform could account for this difference. We address this concern with two types of

Table 9: BALANCING TESTS

— Panel A. Sample of 2% Victory Margin —					
<i>Dependent variable:</i>	Log Size	Log Value Added	Log Assets	Log Intangibles	Log Labor Productivity
Win Dummy	0.0665 (0.0676)	0.0718 (0.112)	-0.000265 (0.120)	0.0404 (0.183)	-0.0636 (0.0581)
Controls	none	none	none	none	none
Observations	2,444	1,354	1,398	1,319	1,336
<i>Dependent variable:</i>	Log Profits	Age	Center	North	
Win Dummy	-0.100 (0.163)	-1.242 (0.654)	-0.0268 (0.0194)	-0.0120 (0.0245)	
Controls	none	none	none	none	
Observations	999	2,521	2,523	2,523	
— Panel B. Full Specification with the Sample of 20% Victory Margin —					
<i>Dependent variable:</i>	Log Size	Log Value Added	Log Assets	Log Intangibles	Log Labor Productivity
Win Dummy	0.0678 (0.0849)	-0.0443 (0.136)	-0.0993 (0.149)	-0.143 (0.227)	-0.0575 (0.0703)
Controls	yes	yes	yes	yes	yes
Observations	23,790	13,127	13,505	12,700	12,986
<i>Dependent variable:</i>	Log Profits	Age	Center	North	
Win Dummy	-0.142 (0.203)	-0.903 (0.839)	-0.00687 (0.0245)	-0.0252 (0.0310)	
Controls	yes	yes	yes	yes	
Observations	9,741	24,414	24,453	24,453	

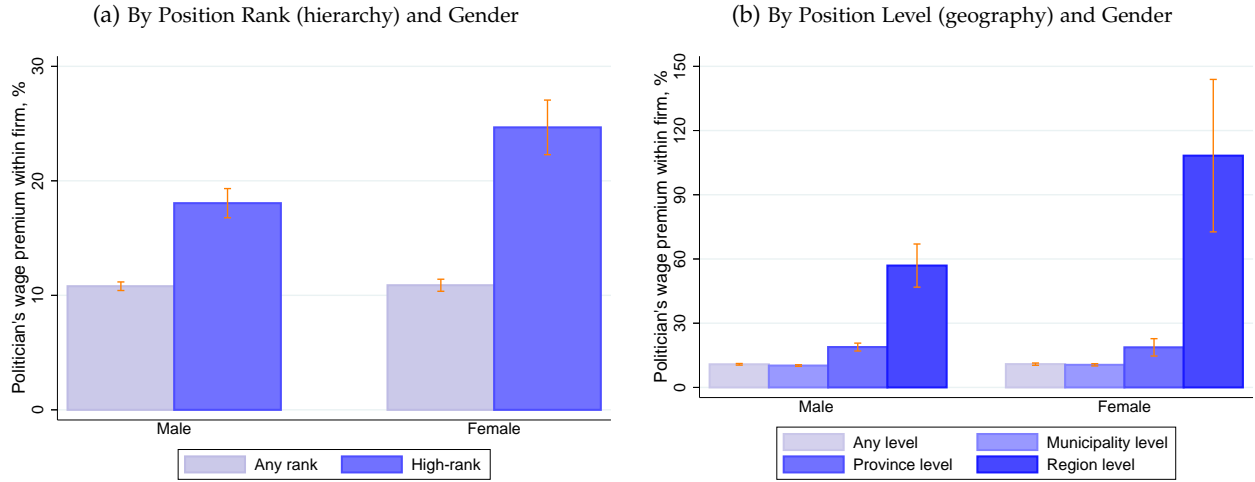
Notes: Table reports differences in pre-determined firm characteristics (at time $T - 1$) between firms that are connected to a winning party versus a losing party. Panel A reports coefficients from the regressions of the dependent variables at time $T - 1$, y_{iT-1} , on winning dummy Win_{iT-1} , with no additional controls. Win_{iT-1} is a dummy variable equal to one if a firm i at time $T - 1$ employs a politician from a party that wins the election at T . Panel B reports coefficients on winning dummy Win_{iT-1} from the regressions of the dependent variables at time $T - 1$, y_{iT-1} , on winning dummy and third order polynomial in margin of victory interacted with winning dummy – similar to the benchmark RD regression specification in (2). Dependent variables are reported in each column header. Robust standard errors are in parentheses.

analysis: within-group and within-individual comparisons.

Within-group comparison. First, we compute wage premiums of politicians relative to their co-workers in the same groups, defined by type of job – white-collar or blue-collar, and gender (see Appendix Table B.3 for more details). Figure 11 reports these within-group wage premiums for white-collar politicians by political position’s hierarchical rank and geographic level. Panel (a) shows that politicians obtain significant wage premiums, starting from 10% for any-rank politician, going

up to 25% for high-rank female politicians. Panel (b) further shows that while municipality-level politicians secure, on average, about a 9% wage premium over similar co-workers, province-level and regional politicians earn premiums that are much higher and go up to a staggering 108% for white-collar male regional politicians.

Figure 11: WITHIN-FIRM WITHIN-GROUP WAGE PREMIUM BY POSITION RANK AND LEVEL



Notes: Wage premium – the percentage difference between politician’s weekly wage and other co-workers’ average weekly wage of the same job collar and gender in the same firm \times year. Panel (a) reports the wage premium of white-collar politicians of any rank versus high-rank politicians. Panel (b) reports the wage premium of white-collar politicians at any level versus other levels (municipal, provincial, or regional – in the hierarchical order). Appendix Table B.3 also reports wage premiums for blue-collar politicians.

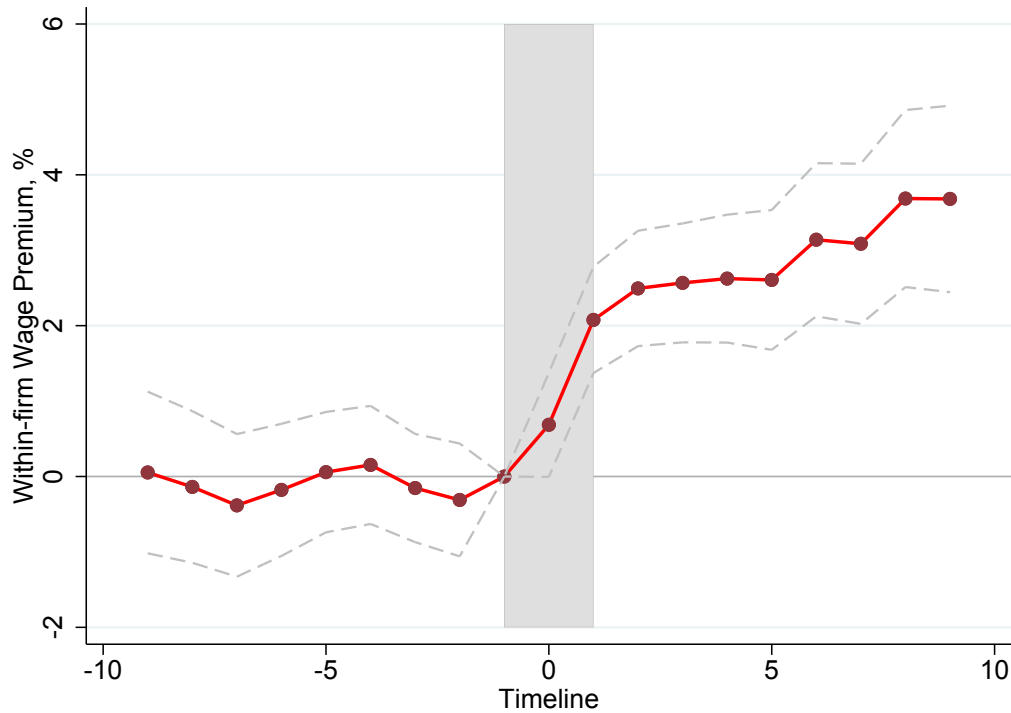
Within-individual comparison. Figure 11 might still reflect differences in other job and worker characteristics between politicians and non-politicians. To mitigate these concerns, in the second analysis, we take an event study approach. We focus on workers who become politicians while working in a firm and we look at the evolution of their wage premiums relative to co-workers in the same firm before and after becoming politicians. Specifically, denote by $t=0$ the year in which an individual becomes a politician for the first time. All years that the individual works in the same firm are indexed relative to that year. We consider a panel of individuals who become politicians while working in a firm and who work in the same firm at least a year before and after the event. We study the evolution of their wage premiums in the 10-year windows before and after the event, as a function of event time. Specifically, we estimate the following specification for the event study (Kleven, Landaís and Sogaard, 2018):

$$y_{ist} = \sum_{j \neq -1} \alpha_j I[j = t] + \sum_k \beta_k I[k = age_{st}] + \sum_y \gamma_y I[y = s] + \varepsilon_{ist}, \quad (3)$$

where y_{ist} is the wage premium – the percentage difference between politician’s weekly wage and other co-workers’ average weekly wage – of individual i in year s at event time t . Hence, the regression includes time event dummies, full set of year dummies, and individual’s age dummies.

Figure 12 plots the α_j coefficients on the event time dummies from this regression.²⁷ Coefficient on $t = -1$ is normalized to zero. Since, in this exercise, all the fixed worker, firm, and colleague characteristics are conditioned on, a jump in the premium at zero can be attributed to the acquisition of political power by the worker. Not surprisingly, the jump at $t = 0$ is gradual, as political appointments usually do not start in the first month of the year. This graph suggests that a worker might become more valuable to his/her firm after s/he enters politics. This result could also be driven by the fact that workers have a greater outside option after acquiring political power and hence can bargain higher wages.

Figure 12: WITHIN-FIRM WAGE PREMIUM BEFORE AND AFTER BECOMING A POLITICIAN



Notes: Figure depicts within-individual within-firm wage premium evolution before and after becoming a politician. Wage premium is the percentage difference between politician's weekly wage and other co-workers' average weekly wage. Red dots depict event time dummy coefficients from regression (3). Omitted dummy is at $t = -1$. The dashed grey lines denote 95% confidence intervals. Standard errors are clustered at the individual level. The vertical shaded area corresponds to the time around the event when a worker becomes a politician for the first time while working in a firm. The sample (700,622 observations) includes all the workers who at some point during their career in a firm become politicians and are observed in the firm for at least a year before and after the event.

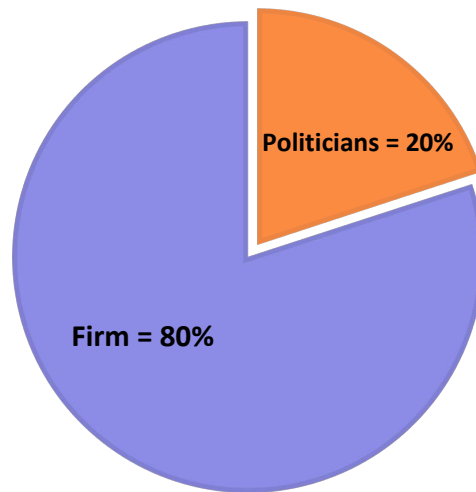
Clearly, a change in the wage premium that we calculate is a lower bound for the total financial benefit of holding political office. First, workers that are also employed in a political job could reduce their private-sector working hours or level of effort. In the absence of detailed data on hours or level of effort, we underestimate the true change in wage premium. Second, the official private-sector wage premium should, presumably, be a small part of the total financial benefits. Non-wage

²⁷The estimated wage premium slightly increases if we look at the premium only relative to stable co-workers from the last year, instead of all co-workers. Hence, a potential change in the composition of co-workers does not play a role.

benefits, like bribes, access to better financing, or other rent-seeking activities may largely contribute to the wealth accumulation of politicians during their term in office (Fisman, Schulz and Vig, 2014). Nevertheless, we find it interesting that the monetary returns for being a politician show up even in the most transparent way – through private sector wages.

Rent sharing. The evidence above indicates that firms value their politician-workers and share the surplus with them. To get a sense of how the surplus is shared, we perform a back of the envelope calculation for the share of additional profits associated with political connections that are accounted by wage premiums paid to politicians. This is suggestive evidence for the amount of (static) rent sharing between a firm and politicians, the evidence of which is the first step in understanding the bargaining process between a firm and the political system.

Figure 13: RENT SHARING BETWEEN FIRM AND POLITICIANS



Notes: Back of the envelope calculation for the rent division between a firm and politicians. Total rent consists of firm's yearly profit gain from connections (blue area) and an additional income gain for worker-politicians estimated from the event study in 12 (orange area). See the main text for the details of the calculation.

To calculate the nominal wage premium paid to politicians, we use an estimate of a change in wage premium after becoming a politician from equation (3). Since wage contracts adjust gradually, we take the average percentage change in the wage premium for several years after acquiring the connection – roughly 0.035 percentage points. Taking the average weekly pay of (non-politician) co-workers in a firm of 747 Euros, and given that on average firms employ 1.7 politician-workers conditional on being connected, we obtain an estimated yearly income gain of 2,311 Euros for politicians in a firm. To the extent that firms could anticipate the future political career of a worker, estimating the wage gain only from a change in the wage premium is a conservative measure of the rents paid by a firm to the politicians. To estimate gains in profits associated with political connections, we use estimates from the firm-level fixed effect regression of yearly profit growth on connection dummy (Table B.2), which amounts to 2.8 percentage points. Given the average value of profits in the sample, we obtain an estimated 9,037 Euros of static yearly profit gain for a firm. Then

our back-of-the-envelope calculation indicates that an additional wage premium paid to politicians can account for 26% of the gains by the firm. In other words, politicians' gains as a percentage of the total surplus from the interaction of a firm and politicians is 20% ($= 26\% / (100\% + 26\%)$). Figure 13 depicts the division. As discussed above, because of anticipation and other potential monetary transfers from a firm not captured by the official private-sector wages, these calculations should be considered as a lower bound for a surplus captured by politicians.

Fact 7. *Worker-politicians earn significant wage premiums relative to their co-workers. This premium increases with the political rank of a worker.*

7 Theoretical Model

In this section, we build a simple model of a firm's innovation and political connections. The model illustrates that, even if political connections may be beneficial to reduce certain types of market frictions for the firms, dynamically, they may induce important social costs through lower reallocation and growth.

How to Model Political Connections? Political connections might affect firms through various channels. As was exemplified in the opening paragraph, political connections might help firms overcome regulatory or bureaucratic burden and get around existing "red tape". In order to understand if this is the case, we examine the patterns of political connection in more heavily versus less heavily regulated industries. For that purpose, we build on Pellegrino and Zingales (2014) and develop our own industry-level "*bureaucracy index*" that measures the level of regulatory or bureaucratic burden, based on newspaper articles from *Factiva* – an online search engine that searches newspaper articles.

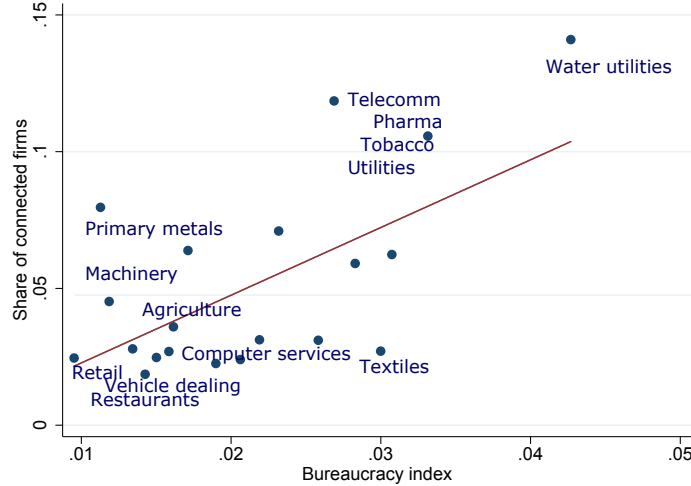
We look at newspaper articles from four large news providers (Bloomberg, Dow Jones Adviser, Financial Times, The Wall Street Journal) and count the number of articles that contain a set of keywords that proxy for government intervention or bureaucracy level that sectors are facing. Factiva groups newspaper articles into 58 sectors that roughly correspond to 2-digit NACE Rev 2 industry classification. Using international newspapers alleviates concerns of endogeneity and reverse causality, as opposed to looking at Italian news. We focus on articles starting from 1991 and experiment with alternative lists of keywords. Our benchmark list consists of "regulation", "regulated", "regulator", "bureaucracy", "bureaucratic", "deregulation", "deregulated", "paperwork", "red tape", "license" and plural forms of these words. We calculate the *Bureaucracy Index* of sector i as follows:

$$Bureaucracy\ Index(i) = \frac{[All\ articles\ related\ to\ i] \cap [All\ articles\ that\ contain\ keywords]}{All\ articles\ related\ to\ i}. \quad (4)$$

This measure is simply the share of newspaper articles in a sector that have certain keywords that are related to bureaucracy/regulation. Figure 14 confirms that there is a strong and positive relationship between an industry's Bureaucracy Index and the share of firms that are politically

connected.²⁸ Appendix Figure B.7 shows similar relationship for high-rank political connections and using an alternative Bureaucracy Index. Appendix Table B.4 reports Bureaucracy Indices and connection intensities for all sectors available in Factiva.

Figure 14: BUREAUCRACY AND CONNECTIONS ACROSS INDUSTRIES



Notes: The binscatter plots with linear fits of the share of politically connected firms against the Bureaucracy Index for all sectors available in Factiva News search. Sector-level Bureaucracy Index is defined in equation 4 and is the share of newspaper articles in a sector that have certain keywords related to bureaucracy or regulation.

That bureaucratic and regulatory burden is pervasive and represents a common obstacle for businesses is also reflected in the recent report by the Ministry for Simplification and Public Administration of Italy.²⁹ The estimated administrative burden faced by private firms in Italy is staggering 31 billion Euros per year (representing 1.7% of the Italian GDP³⁰).³¹ Interestingly, the majority of those bureaucratic procedures is administered by local authorities, thus lending additional support to the importance of local politicians for these issues. Perhaps not surprisingly, based on Doing Business Indicators by the World Bank, Italy ranks among the worst in the friendliness of business regulations across developed countries.³²

Motivated by the above evidence, we build a model where political connections help to overcome particular market frictions – bureaucracy and regulations. We follow the literature (e.g. Restuccia and Rogerson, 2008; Hsieh and Klenow, 2009; Garicano, Lelarge and Van Reenen, 2016) and model these market frictions as wedges in the production process of a firm. A priori, the model gives a chance to political connections to have a positive impact by reducing existing regulations. As we will see, however, even in this model, connections will imply dynamic costs by lowering entry and reallocation.

²⁸For this exercise, we aggregate our industry classification from INPS (ATECO 2007) to the 58 sectors reported in Factiva.

²⁹The so called “Burden Measurement Program”.

³⁰In fact, this compares unfavorably to the aggregate private R&D spending by firms of 0.6% (National Institute of Statistics).

³¹These estimates of administrative burden include costs of procedures related to labor and social security, building, environment, safety, revenue agency, privacy, fire prevention, procurement, and landscape and heritage.

³²Doing Business Indicator, The World Bank, 2017.

7.1 Static Environment

Consider a narrowly defined sector with a sectoral output produced as

$$Y = \frac{1}{1-\beta} \left[\sum_{m=1}^M q_m^{\frac{\beta}{1-\beta}} y_m \right]^{1-\beta} \quad (5)$$

Sectoral output producers are perfectly competitive and we normalize the price of sectoral good to one. In this production function, y_m denotes the output of a producer of vintage m . Different vintages differ by their qualities q_m . Different vintages are perfect substitutes after adjusting for their qualities. Among the *implemented* M vintages, the latest vintage M has the highest quality. Note that in this model, some of the new vintages by potential new entrepreneurs, even though they have superior quality when compared to the current incumbent's quality, might not be implemented in equilibrium, due to incumbent's political connections, as we describe in Section 7.2.

Production function (5) implies that the demand faced by vintage- m producer is given by:

$$p_m = q_m^{\frac{\beta}{1-\beta}} \left[\sum_{m=1}^M q_m^{\frac{\beta}{1-\beta}} y_m \right]^{-\beta} \quad (6)$$

Producers of different vintages compete in prices in order to capture the full market. In equilibrium, the firm with the best cost-adjusted quality will serve the market. Moreover, Assumption 1 below will ensure that the producing firm will also charge the monopoly price. Hence, we will study the monopolist's problem throughout this section.

Assumption 1 *Producers of different-quality vintages play a two-stage pricing game. In the first stage, producers choose to pay a fee ε (which we assume to be arbitrarily small, i.e., $\varepsilon \rightarrow 0$) to enter a price competition in the second stage. In the second stage, all firms that already paid the fee bid prices.*

This assumption ensures that only the firm with the highest cost-adjusted quality pays the fee and goes to the second stage where price is determined. Therefore, the producing firm charges the unconstrained monopoly price.³³

Production technology for each intermediate goods producer is one-for-one in labor:

$$y = l \quad (7)$$

The wage rate of the worker is given by w . Hence, in the absence of any regulatory burden, the marginal cost of production is simply w .

Politically Non-Connected Firms. However, a sector is characterized by regulatory or bureaucratic burden, which we capture by a wedge $\tau \geq 0$ that increases marginal cost of production from w to $(1 + \tau)w$, as in Hsieh and Klenow (2009). Therefore, a monopolist maximizes its profit, subject to

³³This also gives us theoretical tractability, since we do not have to worry about limit pricing.

the demand function it faces, as follows:

$$\begin{aligned}\pi^n &= \max_l \{py - (1 + \tau)wl\} \\ \text{s.t.} \quad &p = q^\beta y^{-\beta} \text{ and (7)}\end{aligned}$$

This maximization delivers the following equilibrium labor (l^n), output (y^n), revenue (Rev^n), profits (π^n) and labor productivity (LP^n) for non-connected firms that face regulatory burden:

$$y^n = l^n = \left(\frac{1 - \beta}{(1 + \tau)w} \right)^{\frac{1}{\beta}} q, \quad Rev^n = \left(\frac{1 - \beta}{(1 + \tau)w} \right)^{\frac{1-\beta}{\beta}} q, \quad \pi^n = \beta \left(\frac{1 - \beta}{(1 + \tau)w} \right)^{\frac{1-\beta}{\beta}} q, \quad LP^n = \frac{w(1 + \tau)}{1 - \beta}.$$

Political Connections. Firms can escape regulation and bureaucracy costs by getting politically connected. If a firm gets politically connected, it can avoid paying the wedge τ , yet it has to incur a cost of political connection w^p , which we take for now as exogenous and endogenize it later in Appendix C through the Nash bargaining between a firm and a politician. We can think of w^p as the wage that the firm needs to pay to the employed politicians (similar to what we have shown in Section 6) or as search or other type of cost that firm incurs to maintain its political connection. However, in order to be able to acquire political connections, a firm has to become familiar with the network of politicians. We capture the ability to become politically connected by assuming that firms can be in two states, $s \in \{0, 1\}$. In particular, $s = 0$ indicates that the firm is not yet familiar with the political network, whereas $s = 1$ implies that firms are already familiar with the network and can acquire political connections, “if they want to”.

If a firm is in state $s = 1$ and is politically connected, then it solves the following maximization problem:

$$\begin{aligned}\pi^p &= \max_l (py - wl - w^p) \\ \text{s.t.} \quad &p = q^\beta y^{-\beta} \text{ and (7)}\end{aligned}$$

This maximization delivers the following equilibrium labor (l^p), output (y^p), revenue (Rev^p), profits (π^p), and labor productivity (LP^p) for connected firms that face regulatory burden:

$$y^p = l^p = \left(\frac{1 - \beta}{w} \right)^{\frac{1}{\beta}} q, \quad Rev^p = \left(\frac{1 - \beta}{w} \right)^{\frac{1-\beta}{\beta}} q, \quad \pi^p = \beta \left(\frac{1 - \beta}{w} \right)^{\frac{1-\beta}{\beta}} q - w^p, \quad LP^p = \frac{w}{1 - \beta}.$$

Table 10 compares the optimal decisions of connected versus non-connected firms. The last column points out the direction of change in the relevant moments when a non-connected firms becomes connected.

The important result here is that the connected firms eliminate the regulatory burden and therefore grow more in labor and revenue – even though they do not necessarily grow in productivity. This is consistent with the empirical findings in Section 4.3.

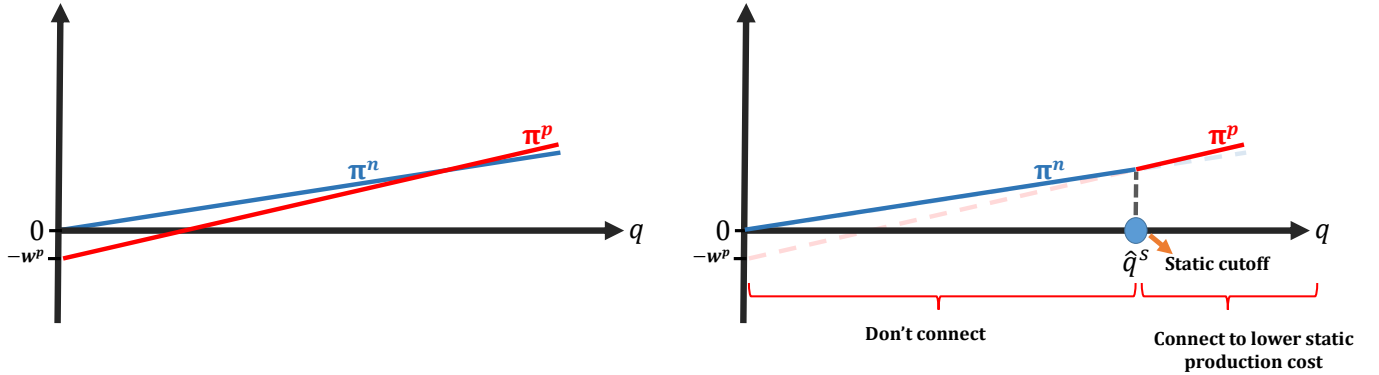
Prediction 1 *Political connections are associated with higher employment and revenue growth, but not with labor productivity growth.*

Table 10: THE IMPACT OF POLITICAL CONNECTION ON STATIC MOMENTS

	Non-connected Firms		Connected Firms	Change
Labor:	$\left[\frac{(1-\beta)}{(1+\tau)w} \right]^{\frac{1}{\beta}} q$	vs	$\left[\frac{(1-\beta)}{w} \right]^{\frac{1}{\beta}} q$	\uparrow
Revenue:	$\left[\frac{(1-\beta)}{(1+\tau)w} \right]^{\frac{1-\beta}{\beta}} q$	vs	$\left[\frac{(1-\beta)}{w} \right]^{\frac{1-\beta}{\beta}} q$	\uparrow
Labor Productivity:	$\frac{(1+\tau)w}{(1-\beta)}$	vs	$\frac{w}{(1-\beta)}$	\downarrow

When do firms decide to get connected? Figure 15 provides a graphical illustration of the answer. Panel (a) plots the profits of connected and non-connected firms as a function of the quality levels of their product. Panel (b), on the other hand, plots the equilibrium connection decision and indicates the resulting static return — the outer envelope (i.e., the maximum) of the two lines.

Figure 15: CONNECTION DECISION IN A STATIC ENVIRONMENT



Firms that have the option of being connected (i.e., $s = 1$) choose to do so if $\pi^p(q) > \pi^n(q)$. Since both profits are linear in q , the static equilibrium is such that firms follow a cut-off rule (\hat{q}^s) and get connected if and only if $q > \hat{q}^s$ where,

$$\hat{q}^s \equiv \frac{w^p}{\pi \left(1 - (1 + \tau)^{-\frac{1-\beta}{\beta}} \right)},$$

where $\pi \equiv \beta \left(\frac{1-\beta}{w} \right)^{\frac{1-\beta}{\beta}}$. Hence, larger firms find it optimal to become connected in order to remove regulatory burden. In what follows, for simplicity, we assume $\beta = 0.5$ and we rewrite this *static threshold* as

$$\hat{q}^s = \frac{w^p}{\pi} \frac{1 + \tau}{\tau} \quad (8)$$

Note that the threshold declines in the regulatory burden τ , implying that firms are more likely to

be connected in more regulated industries. We will come back to this threshold in the next section, after discussing a firm's dynamic problem.

7.2 Dynamics

At each point in time, there is a potential entrant who receives a new innovative idea with Poisson arrival rate p and can produce a new vintage. A new idea of quality λ improves the latest vintage quality q_M according to the following law of motion

$$q_{M+1} = (1 + \lambda) q_M$$

where $\lambda \sim F(0, \infty)$ is the realization of the innovation quality that is distributed according to some distribution $F(\cdot)$.

Accessing a network of politicians takes time. We assume that α share of entrants start with $s = 1$ and $1 - \alpha$ start with $s = 0$. Firms switch from state $s = 0$ to $s = 1$ at the Poisson arrival rate ζ . These assumptions are in line with the empirical evidence that firms that are connected are older, even after controlling for firm size (Figure 2). In our model, state $s = 1$ is assumed to be an absorbing state.

Importantly, not all entrants that have a better-quality product will be able to replace existing incumbents.³⁴ For an entrant to replace the incumbent, its quality-adjusted cost should be lower than that of an incumbent. When there is an asymmetry in connections between an entrant and incumbent, the quality advantage of an entrant has to be very high in order to overcome the cost advantage of an incumbent, who is immune to the regulatory costs. To see this, consider the following three cases.

Case 1 *Incumbent is not connected.*

If incumbent is not connected, any quality improvement $\lambda > 0$ by an entrant will lead to creative destruction. Hence, creative destruction rate is simply equal to entry rate p . This case is a standard Schumpeterian case as in Aghion and Howitt (1992), for instance.

Case 2 *Incumbent is connected, entrant is connected.*

This case is equivalent to Case 1: any quality improvement by $\lambda > 0$ will lead to creative destruction at the rate p .

Case 3 *Incumbent is connected, entrant is not connected.*

In this asymmetric case, when the incumbent is connected and the entrant is not connected, creative destruction would be lower. This is because an entrant should not only produce a superior technology, but it should also overcome the regulatory burden that the incumbent is not subject to. In the rest of this subsection, we will show this formally.

³⁴If a higher-quality vintage is not able to enter the market, we assume that the vintage is lost. Hence, ideas are implemented right away or are lost.

Let us first start with the price competition between an entrant and the incumbent. Let us denote the current incumbent by M and the new entrant by $M + 1$. The demand for each vintage is given by (6). As a result, for an entrant to win the pricing game, the quality per price has to be greater:

$$\frac{q_{M+1}}{p_{M+1}} > \frac{q_M}{p_M}. \quad (9)$$

Now we can look for a threshold innovation quality λ^* that can ensure that entrant will produce in equilibrium. In the price competition, the lowest price that the incumbent can charge is w , whereas the lowest possible price for the entrant's vintage is $(1 + \tau)w$. Since the entrant's quality is $q_{M+1} = (1 + \lambda)q_M$, the condition in (9) gives us the innovation quality threshold λ^* , above which entrants successfully replace incumbents:

$$\lambda > \lambda^* \equiv \tau.$$

This result is intuitive. Since the incumbent has a cost advantage thanks to its political connection, the entrant has to produce a sufficiently large innovation that can overcome the cost advantage. This threshold is exactly equal to the regulatory advantage of the incumbents, i.e., τ .

This leads us to a key question: when do incumbents decide to become connected in this dynamic environment? To answer this question, we first need to express the value functions of incumbents. We will pose that the firms will follow a cutoff rule such that firms with $q > \hat{q}^d$ will decide to connect in this dynamic model. We will ultimately solve for this *dynamic threshold* \hat{q}^d .

First, consider a firm with $q < \hat{q}^d$ and denote its value by V_{-1} . Then

$$rV_{-1}(q) = \pi(1 + \tau)^{-1}q - pV_{-1}.$$

where $r > 0$ is the exogenous interest rate. This value function simply equates the safe return $rV_{-1}(q)$ to the risky return on the right-hand side. Firms collect their instantaneous profits $\pi^n(q) = \pi(1 + \tau)^{-1}q$ and get replaced at the rate p , in which case they exit. Rearranging this value function implies

$$V_{-1}(q) = \frac{\pi(1 + \tau)^{-1}}{r + p}q. \quad (10)$$

Intuitively, firm value decreases in the regulatory burden τ and rate of creative destruction p .

Now, we can solve for the value of a firm that has a quality that is above the threshold $q \geq \hat{q}^d$, but is not yet exposed to the politician network (i.e., $s = 0$). Denoting this value by V_0 , we can express it as:

$$rV_0(q) = \pi(1 + \tau)^{-1}q - pV_0 + \zeta(V_1 - V_0),$$

This value function is very similar to (10), with the exception that firms that are not exposed to a politician network will get exposed at the rate ζ . In this case, their state switches from $s = 0$ to $s = 1$ and we denote the value of the latter case as V_1 .

For a firm that is in state $s = 1$ with $q \geq \hat{q}^d$, the value function can be expressed as:

$$rV_1(q) = \pi q - w^p - p \left[\underbrace{\alpha}_{\text{connected}} + \underbrace{(1 - \alpha) \Pr(\lambda > \lambda^*)}_{\text{non-connected but major innovation}} \right] V_1. \quad (11)$$

This time, the value function contains some additional terms that affect the rate at which the incumbent is replaced by the entrant. If the entrant is already exposed to the politician network (with probability α), any innovation is sufficient to replace the incumbent. If the entrant is not yet exposed to the political network (with probability $1 - \alpha$), the entrant cannot get around the regulatory burden and, therefore, is at disadvantage compared to the incumbent. In this case, the entrant has to come up with a large enough innovation ($\lambda > \lambda^*$) to make-up for the regulatory disadvantage, which can happen with probability $\Pr(\lambda > \lambda^*)$.

Rearranging (11) delivers:

$$V_1(q) = \frac{\pi q - w^p}{r + p[\alpha + (1 - \alpha) \Pr(\lambda > \lambda^*)]}. \quad (12)$$

Firms connect to politicians if and only if the value of connection is bigger than of non-connection:

$$V_1(q) > V_{-1}(q).$$

Using (10) and (12), this condition holds if and only if the quality level is above the *dynamic threshold* \hat{q}^d :

$$q > \hat{q}^d \equiv \frac{w^p}{\pi \left[1 - \frac{r + \tilde{p}}{r + p} \frac{1}{1 + \tau} \right]} \quad (13)$$

where $\tilde{p} \equiv p[\alpha + (1 - \alpha) \Pr(\lambda > \lambda^*)]$. This result shows again the importance of the level of regulation and firm size for political connection.

Prediction 2 *In more regulated industries ($\tau \uparrow$), firms are more likely to be politically connected.*

The dynamic cut-off, just like the static cut-off, is decreasing in τ . This implies that in more regulated industries, firms are getting connected earlier. This follows from the fact that more regulation imposes larger costs on firms. Hence, eliminating these burdens through political connections becomes more profitable when the regulations are heavier.

Prediction 3 *Large firms are more likely to be connected.*

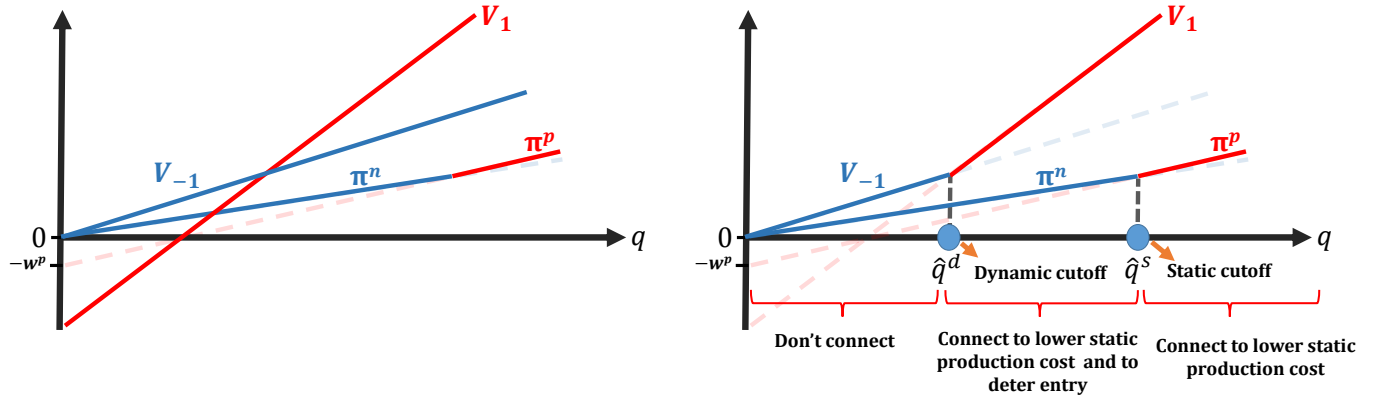
The key difference of this prediction from Prediction 1 is the direction of causality. Our model predicts a two-way impact: as firms grow in size, they find it worthwhile to incur the connection cost to eliminate the regulatory burden. Hence, larger firms are more likely to be connected. In addition, when they connect and remove the regulatory burden, they grow even more by hiring more workers (Prediction 1).

Preemptive Motive. Now we can compare the static cut-off in (8) and the dynamic cut-off in (13):³⁵

$$\hat{q}^s \equiv \frac{w^p}{\pi \left[1 - \frac{1}{1+\tau}\right]} > \hat{q}^d \equiv \frac{w^p}{\pi \left[1 - \underbrace{\frac{r + \tilde{p}}{r + p}}_{\text{preemptive motive}} \frac{1}{1+\tau}\right]}.$$

An important insight emerges from the comparison between the static and dynamic cutoffs. We see that $\hat{q}^d < \hat{q}^s$, as illustrated in Figure 16. In the region with $q \in [\hat{q}^d, \hat{q}^s]$, there is an additional *preemptive motive* to acquire political connections. Incumbents anticipate that, by getting connected, they discourage entry and survive longer, hence they optimally choose to seek a connection earlier. Notice that the difference between the two cutoffs in (8) and (13) disappears if $\alpha \rightarrow 1$, i.e., if all entrants are able to get connected. Likewise, if there is no regulatory burden ($\tau = 0$), the static and dynamic thresholds collapse to the same value, $\hat{q}^d = \hat{q}^s$. In those two extreme cases, there is no room for strategic entry deterrence. Hence, strategic motive becomes more apparent when the industry is heavily regulated (i.e., $\tau \uparrow$) or when the social asymmetry between incumbents and entrants is big (i.e., $\alpha \downarrow$).

Figure 16: CONNECTION DECISION IN A DYNAMIC ENVIRONMENT



Note that the entry rate is:

$$\text{Entry rate} = \begin{cases} p & \text{if incumbent is not connected,} \\ \tilde{p} & \text{if incumbent is connected.} \end{cases}$$

Prediction 4 In connected industries, entry rate is lower, hence connected incumbents are less likely to exit.

The intuition for this result comes from the fact that, since an entrant is relatively disadvantaged in getting connected, it must come up with a larger (more radical) innovation in order to overcome the effective advantage of the incumbent, due to its political connections. Since the probability of a larger innovation is lower, this also lowers the entry probability, as well as the probability that the incumbent gets displaced. Notice that if $\alpha = 1$ – all entrants are able to get connected, creative

³⁵Note that $\pi^p > 0$ when $q > \hat{q}^d$. Hence, connected firms never make any static loss in equilibrium.

destruction is equal to entry rate p . Hence, the co-existence of red tape (τ) and the asymmetry in connections ($\alpha < 1$) are the factors that generate lower creative destruction.

Another implication is that incumbents that are politically connected are more likely to be replaced by connected entrants.³⁶ This result is in line with an empirical observation from Table 4 – share of connected entrants is higher if incumbents are more connected.

The model generates additional intuitive predictions, consistent with empirical findings from the data, when we extend it with endogenous wage determination. To save space, we delegate this extension to Appendix C. We consider a model extension, wherein politicians are heterogeneous in their political power (in line with their hierarchies, as defined in Section 3) and compensation is determined through Nash bargaining between the firm and the politician. The model implies that: 1) compensation increases with political power of a worker-politician (consistent with Fact 7); and 2) the greater the political power of the politician, the higher the rate of survival for the connected market incumbent (consistent with Fact 5).

7.3 Taking Stock

The distinction between static and dynamic effects is important: statically, connections reduce frictions, but dynamically the model implies lower entry and reallocation, resulting in markets that are dominated by older and larger firms with low innovation and productivity growth.

Notice that the negative effect of connections on firm entry and competition is not hard-wired in our model. To the contrary, we considered the positive side of political connections by assuming that political connections help remove red tape in the input market. However, an interesting result of our model is that firms use this possibility to prevent dynamic entry. Reduction in entry is an endogenous response of the economy to the market conditions, where the ability to get connected is distributed unequally between entrants and incumbents. This response arises only dynamically: in a static environment, political connections are socially beneficial and represent the second best, given the market frictions. Hence, starting with the "well-intended" nature of political connections, without imposing any direct negative effect from them, a simple glimpse into dynamic effects from misallocation uncovers important aggregate costs. This intuitive model provides some new theoretical insights into understanding the social costs of political connections.

7.4 Alternative Mechanisms

Our model that emphasized the role of political connection in removing red tape is able to qualitatively explain stylized facts from the data. In this section, we briefly discuss other potential channels, through which political connections could affect firms and the implications thereof.

First, firms may rely on connections in order to help their new technologies or services penetrate the market. In this sense, connections may be catalyzers for incumbents' innovation, by reducing its effective cost. However, this mechanism would imply that 1) at the firm level, connections and innovation should go hand-in-hand and that 2) firms should grow both in terms of size and productivity as a result of connections. These contradict our findings in Fact 4 and Fact 6.

³⁶If an incumbent is not connected, its probability of getting replaced by a connected entrant, conditional on an innovation is 1. In the case of a connected incumbent, this probability is: $\alpha + (1 - \alpha) \Pr(\lambda > \lambda^*) < 1$.

Second, one could imagine a completely negative scenario where incumbents use their connections to directly block entry by competitors. While this may be plausible, we do not have direct evidence for this mechanism and, if anything, it would strengthen the negative results from the model.

Finally, we believe alternative channels, including such elements as preferential bank lending or procurement contract allocation, could also be empirically relevant. In both cases, similar to the current model, this could generate asymmetric wedges in the effective cost of capital and in the demand shifter, respectively. This would lead to similar implications to the current model. Exploring the quantitative importance of these various channels is an important question that we do not tackle in this paper. Instead, the purpose of our illustrative model was to uncover a new tradeoff between *static benefits* and *dynamic losses* from lower reallocation and innovation.

8 Conclusion

In this paper, we studied the link between political connections and firm dynamics, both theoretically and empirically, with Italy as our example. Our brand-new data, matching multiple administrative datasets together for the first time, enabled us to uncover new findings at the micro and macro levels. We showed that hiring/employing a local politician is a common practice, especially among large market leaders. Politician-workers earn significant wage premiums, relative to their co-workers, that are not explained by their individual characteristics. We also showed that politically connected firms grow in employment and revenues, survive longer in the market, but at the same time, have lower productivity growth. This finding is consistent with the view that political connections help firms remove particular market frictions or block competition, as opposed to help them push the productivity and technology frontiers. Our analysis also showed that firms lower their innovation efforts and increase their political connections as they become the market leaders. At the more aggregate level, political connections tend to be associated with worse industry dynamics – lower entry, reallocation, growth, and productivity. This indicates that the effects of firm-level political connections go beyond the micro-level effects on connected firms, and may imply significant social costs.

A growing body of literature has argued that factor reallocation from low-productivity incumbents to high-productivity entrants is an important source of economic growth. Our results suggest that political connections might be an important impediment to such factor reallocation and productivity growth. While these connections might alleviate certain market frictions, such as regulatory barriers or bureaucratic burden, dynamically – by giving incumbents a powerful advantage over entrants – their detrimental impact on market competition and creative destruction might reverse the static benefits. Our results could also shed some light on the declining business dynamism in the U.S. and in Europe, where market concentration has increased and lobby spending has grown to record levels (Zingales, 2012; Decker, Haltiwanger, Jarmin and Miranda, 2016; Loecker and Eeckhout, 2018). Future work should incorporate these opposing effects that have been highlighted in our model and assess their quantitative importance for aggregate growth and welfare in different countries.

References

- Abrams, David, Ufuk Akcigit, and Jillian Popadak**, "Patent Value and Citations: Creative Destruction or Strategic Disruption?," Working Paper 19647, National Bureau of Economic Research 2013.
- Acemoglu, Daron, Tarek A Hassan, and Ahmed Tahoun**, "The Power of the Street: Evidence from Egypt's Arab Spring," *Review of Financial Studies*, 2017, 31 (1), 1–42.
- Aghion, Philippe and Peter Howitt**, "A Model of Growth through Creative Destruction," *Econometrica*, 1992, 60 (2), 323–351.
- Akcigit, Ufuk and William R Kerr**, "Growth through Heterogeneous Innovations," *Journal of Political Economy*, 2018, 126 (4), 1374–1443.
- Arayavechkit, Tanida, Felipe E. Saffie, and Minchul Shin**, "Too Big to Pay: Tax Benefits and Corporate Lobbying," *Working Paper*, 2017.
- Backman, Michael**, *Asian Eclipse: Exposing the Dark Side of Business in Asia*, Wiley, 2001.
- Bartelsman, Eric J and Mark Doms**, "Understanding Productivity: Lessons from Longitudinal Microdata," *Journal of Economic Literature*, 2000, pp. 569–594.
- Baumol, William J.**, "Entrepreneurship: Productive, Unproductive, and Destructive," *Journal of Political Economy*, 1990, 98 (5, Part 1), 893–921.
- Bugamelli, Matteo and Francesca Lotti**, "Productivity Growth in Italy: a Tale of a Slow-motion Change," 2018. Bank of Italy, Occasional Papers n. 422.
- Cingano, Federico and Paolo Pinotti**, "Politicians at Work: The Private Returns and Social Costs of Political Connections," *Journal of the European Economic Association*, 2013, 11 (2), 433–465.
- Comino, Stefano, Alberto Galasso, and Clara Graziano**, "The Diffusion of New Institutions: Evidence from Renaissance Venice's Patent System," Working Paper 24118, National Bureau of Economic Research December 2017.
- Cull, Robert and Lixin Colin Xu**, "Institutions, Ownership, and Finance: the Determinants of Profit Reinvestment among Chinese Firms," *Journal of Financial Economics*, 2005, 77 (1), 117–146.
- Davis, Steven, John Haltiwanger, and Scott Schuh**, *Job Creation and Destruction*, 1 ed., Vol. 1, The MIT Press, 1998.
- Decker, Ryan A., John Haltiwanger, Ron S. Jarmin, and Javier Miranda**, "Declining Business Dynamism: What We Know and the Way Forward," *American Economic Review*, May 2016, 106 (5), 203–07.
- Dinc, I Serdar**, "Politicians and Banks: Political Influences on Government-owned Banks in Emerging Markets," *Journal of Financial Economics*, 2005, 77 (2), 453–479.
- Do, Quy-Toan and Andrei A Levchenko**, *Comparative Advantage, Demand for External Finance, and Financial Development*, World Bank, 2006.
- Duca, Louis F. Del and Patrick Del Duca**, "An Italian Federalism?: The State, Its Institutions and National Culture as Rule of Law Guarantor," *The American Journal of Comparative Law*, 2006, 54 (4), 799–841.

- Faccio, Mara and David Parsley**, "Sudden Deaths: Taking Stock of Political Connections," January 2006. CEPR Discussion Papers #5460.
- Fan, Joseph PH, Tak Jun Wong, and Tianyu Zhang**, "Politically Connected CEOs, Corporate Governance, and Post-IPO Performance of China's Newly Partially Privatized Firms," *Journal of Financial Economics*, 2007, 84 (2), 330–357.
- Fang, Lily, Josh Lerner, Chaopeng Wu, and Qi Zhang**, "Corruption, Government Subsidies, and Innovation: Evidence from China," *Working paper*, 2018.
- Fisman, Raymond**, "Estimating the Value of Political Connections," *American Economic Review*, 2001, 91 (4), 1095–1102.
- , **Florian Schulz, and Vikrant Vig**, "The Private Returns to Public Office," *Journal of Political Economy*, 2014, 122 (4), 806–862.
- Foster, Lucia, John C Haltiwanger, and Cornell John Krizan**, "Aggregate Productivity Growth: Lessons from Microeconomic Evidence," in "New Developments in Productivity Analysis," University of Chicago Press, 2001, pp. 303–372.
- , **John Haltiwanger, and Cornell J Krizan**, "Market Selection, Reallocation, and Restructuring in the US Retail Trade Sector in the 1990s," *Review of Economics and Statistics*, 2006, 88 (4), 748–758.
- Garcia-Santana, Manuel, Josep Pijoan-Mas, Enrique Moral-Benito, and Roberto Ramos**, "Growing like Spain: 1995-2007," Working Papers 1609, Banco de Espana, Working Papers May 2016.
- Garicano, Luis, Claire Lelarge, and John Van Reenen**, "Firm Size Distortions and the Productivity Distribution: Evidence from France," *American Economic Review*, November 2016, 106 (11), 3439–79.
- Goldman, Eitan, Jörg Rocholl, and Jongil So**, "Politically Connected Boards of Directors and The Allocation of Procurement Contracts," *Review of Finance*, 2013, 17 (5), 1617–1648.
- Grossman, Gene and Elhanan Helpman**, "Quality Ladders in the Theory of Growth," *Review of Economic Studies*, 1991, 58 (1), 43–61.
- Hall, Bronwyn, Adam Jaffe, and Manuel Trajtenberg**, "The NBER Patent Citations Data File: Lessons, Insights and Methodological Tools," Working Paper 8498, National Bureau of Economic Research 2001.
- Haltiwanger, John, Ron S. Jarmin, and Javier Miranda**, "Who Creates Jobs? Small versus Large versus Young," *The Review of Economics and Statistics*, 2013, 95 (2), 347–361.
- Hsieh, Chang-Tai and Peter J Klenow**, "Misallocation and Manufacturing TFP in China and India," *The Quarterly Journal of Economics*, 2009, 124 (4), 1403–1448.
- Joh, Sung Wook and Ming Ming Chiu**, "Loans to Distressed Firms: Political Connections, Related Lending, Business Group Affiliation and Bank Governance," in "Econometric Society 2004 Far Eastern Meetings" number 790 Econometric Society 2004.
- Johnson, Simon and Todd Mitton**, "Cronyism and Capital Controls: Evidence from Malaysia," *Journal of Financial Economics*, 2003, 67 (2), 351–382.
- Kaufmann, Daniel and Shang-Jin Wei**, "Does 'Grease Money' Speed Up the Wheels of Commerce?," 1999. National Bureau of Economic Research #7093.

- Khwaja, Asim Ijaz and Atif Mian**, "Do Lenders Favor Politically Connected Firms? Rent Provision in an Emerging Financial Market," *Quarterly Journal of Economics*, 2005, 120 (4), 1371–1411.
- Kleven, Henrik, Camille Landaïs, and Jakob Egholt Sogaard**, "Children and Gender Inequality: Evidence from Denmark," Working Paper 24219, National Bureau of Economic Research January 2018.
- Koff, Stephen P.**, "Italy: From the 1st to the 2nd Republic," *Routledge*, 2002.
- Kogan, Leonid, Dimitris Papanikolaou, Amit Seru, and Noah Stoffman**, "Technological Innovation, Resource Allocation, and Growth," Working Paper 17769, National Bureau of Economic Research 2012.
- Kroszner, Randall S. and Thomas Stratmann**, "Interest-group Competition and the Organization of Congress: Theory and Evidence from Financial Services' Political Action Committees," *American Economic Review*, 1998, pp. 1163–1187.
- Krusell, Per and Jose-Victor Rios-Rull**, "Vested Interests in a Positive Theory of Stagnation and Growth," *Review of Economic Studies*, 1996, 63 (2), 301–329.
- Lanjouw, Jean O. and Mark Schankerman**, "Patent Quality and Research Productivity: Measuring Innovation with Multiple Indicators," *Economic Journal*, 2004, 114 (495), 441–465.
- Lee, David S.**, "Randomized Experiments from Non-random Selection in U.S. House Elections," *Journal of Econometrics*, 2008, 142 (2), 675–697.
- Lerner, Josh**, "The Importance of Patent Scope: An Empirical Analysis," *RAND Journal of Economics*, 1994, 25 (2), 319–333.
- Leuz, Christian and Felix Oberholzer-Gee**, "Political Relationships, Global Financing, and Corporate Transparency: Evidence from Indonesia," *Journal of Financial Economics*, 2006, 81 (2), 411–439.
- Loecker, Jan De and Jan Eeckhout**, "Global Market Power," NBER Working Papers 24768, National Bureau of Economic Research, Inc June 2018.
- Lotti, Francesca and Giovanni Marin**, "Matching of PATSTAT applications to AIDA firms: discussion of the methodology and results," Questioni di Economia e Finanza (Occasional Papers) 166, Bank of Italy, Economic Research and International Relations Area June 2013.
- Mattozzi, Andrea and Antonio Merlo**, "Political Careers or Career Politicians?," *Journal of Public Economics*, April 2008, 92 (3-4), 597–608.
- Moser, Petra, Joerg Ohmstedt, and Paul Rhode**, "Patent Citations and the Size of the Inventive Step - Evidence from Hybrid Corn," Working Paper 21443, NBER July 2015.
- Mukoyama, Toshihiko and Latchezar Popov**, "The Political Economy of Entry Barriers," *Review of Economic Dynamics*, 2014, 17 (3), 383–416.
- Murphy, Kevin M., Andrei Shleifer, and Robert W. Vishny**, "The Allocation of Talent: Implications for Growth," *Quarterly Journal of Economics*, 1991, 106 (2), 503–530.
- Pakes, Ariel**, "Patents as Options: Some Estimates of the Value of Holding European Patent Stocks," *Econometrica*, 1986, 54 (4), 755–784.
- **and Mark Schankerman**, "Estimates of the Value of Patent Rights in European Countries During the Post-1950 Period," *Economic Journal*, 1986, 96 (384), 1052–1076.

- Pellegrino, Bruno and Luigi Zingales**, “Diagnosing the Italian Disease,” *Unpublished manuscript*, September, 2014, 14.
- Restuccia, Diego and Richard Rogerson**, “Policy Distortions and Aggregate Productivity with Heterogeneous Establishments,” *Review of Economic Dynamics*, 2008, 11 (4), 707 – 720.
- Schoenherr, David**, “Political Connections and Allocative Distortions,” 2015. Institute of Global Finance Working Paper No. 5.
- Shleifer, Andrei and Robert W Vishny**, “Politicians and Firms,” *Quarterly Journal of Economics*, 1994, 109 (4), 995–1025.
- and —, *The Grabbing Hand: Government Pathologies and Their Cures*, Harvard University Press, 2002.
- Soto, Hernando De**, *The Other Path*, Harper & Row New York, 1989.
- Thoma, Grid, Salvatore Torrisci, Alfonso Gambardella, Dominique Guellec, Bronwyn H Hall, and Dietmar Harhoff**, “Harmonizing and Combining Large Datasets - An Application to Firm-Level Patent and Accounting Data,” Working Paper 15851, National Bureau of Economic Research March 2010.
- Trajtenberg, Manuel**, “A Penny for Your Quotes: Patent Citations and the Value of Innovations,” *RAND Journal of Economics*, 1990, 21 (1), 172–187.
- Vannucci, Alberto**, “The Controversial Legacy of “Mani Pulite”: A Critical Analysis of Italian Corruption and Anti-Corruption Policies,” *Bulletin of Italian Politics*, 2009, 1 (2), 233–264.
- Zingales, L.**, *A Capitalism for the People: Recapturing the Lost Genius of American Prosperity*, Basic Books, 2012.

Appendix

A Data Construction

This section provides more details on the steps undertaken during the data and variables construction.

A.1 Dataset #1: Social Security Data (INPS)

The Italian SS data contains rich information on the universe of private-sector firms and their workers making social security contributions at INPS. At the individual level, we calculate an individual *weekly wage* – weekly gross labor income (including bonuses and overtime) as total yearly labor income, divided by number of weeks worked. We classify a worker as a *white-collar* if s/he is a manager, executive, professional, or an office worker (*qualifica1* variable from UniEMENS equal to 2,3,7,9, or P).

At the firm level, we describe a construction of three variables from INPS – employment, average weekly pay, and age. To construct yearly employment at the firm level³⁷ – a variable firm *Size* – we count the number of workers present in a firm in March.³⁸ Some observations may be zeros, especially when firm is just starting or before it exits the business. We define employment growth at time t as employment growth to the next period:

$$gL_{it} = 2 \frac{L_{it+1} - L_{it}}{L_{it+1} + L_{it}}, \quad (14)$$

where gL_{it} stands for growth rate and L_{it} for employment. This measure follows Davis et al. (1998) and is bounded between -2 and 2 and reduces impact of outliers – which is especially important at the entry and exit of a firm.

At the firm level, *Average weekly pay* refers to the average weekly pay (in thousands of 2014 Euros) of workers who are present in March. A firm's *Age* is calculated from the first year when it gives a formal notice of operations to the INPS office intending to have an employee on the payroll.

A.2 Dataset #2: Firm Financials Data (Cerved)

We use the following main company accounts variables from Cerved: a firm's total assets, intangible assets, value added, and profits. In addition, we compute labor productivity, LP , and total factor productivity, TFP .

VA is the yearly value added of a firm – revenue less the cost of intermediates. We replace with missing any negative value added (*valore_aggiunto_operativo*). *Profits* is value added less operating expenses, depreciation, and financial costs. *Assets (attivo)* is the total assets of a firm. *Intangibles* is intangible fixed assets. For tangible assets (*immob_mat*) and intangible fixed assets (*immob_immat*), we replace missings with zeros when possible. In most cases, Cerved data does not distinguish between missing values and zeros: observations whose value is less than 1 (in 1000) and observations that are truly missing in the report will both appear as missing. This is the case with tangible and intangible fixed assets variables. We impute with 0.5 (in 1000) the value of intangible assets if value of tangible assets is not missing, and vice versa for tangible assets. We verify these imputations with another simple imputation of missing values in the panel of firms – by simply

³⁷Note that firm-level employment variable in Cerved data is of very poor quality, so INPS data is crucial to construct a complete firm-level dataset.

³⁸This is consistent with data construction by (Haltiwanger, Jarmin and Miranda, 2013) using the U.S. Census data. Alternatively, one can look at average monthly employment in a year, but the measures are very similar.

imputing the missing value with latest non-missing observation. If such an imputation is too far off from the initial imputation of 0.5, we revert back to the missing value.

LP – labor productivity – is defined as value added per employee. We calculate a firm’s total factor productivity, TFP , using a standard Cobb-Douglas specification: $Y = zK^\alpha L^{1-\alpha}$. Output (Y) is measured as value added, capital (K) is measured as total assets, labor (L) is employment, and labor share ($1 - \alpha$) is the average industry-level labor share from the data. This gives us z – our TFP measure.

Corresponding growth rates of the above variables at time t are calculated as a growth from t to $t + 1$. All nominal variables are deflated with GDP deflator (2014 is the base year). In the analysis, we winsorize all these variables at top and bottom 1 percent.

A.3 Dataset #3: Patent Data (PATSTAT)

We use EPO PATSTAT to obtain information on patenting activities of Italian firms. This section describes the matching procedure of EPO PATSTAT to our firm-level data, as well as the construction of our patent-based innovation measures.

First, we identify the sample of EPO patents applied for by Italian firms. Focusing on the period of 1990-2014, we identify 84,085 EPO patent applications filed by Italian companies. Some of those applications represent variants of the same patent and belong to the same patent family. Applicants may seek for protection for their inventions in multiple national offices, resulting in multiple applications that effectively represent the same invention. Hence, the relevant count is a count of unique patent families: we have 71,240 EPO patent families. In what follows, when it does not incur ambiguity, we will refer to patent families as just patents.

Second, we need to match patent records with our firm-level datasets. Unfortunately, patent data does not provide firm fiscal codes, which we could use to directly match PATSTAT records to Cerved data. Hence, we turn to company name cleaning routines to help to standardize company names in PATSTAT, and then match those names to fiscal codes. We proceed in the following three steps. We start by using an extensive patent-firm fiscal code match conducted by Unioncamere-Dintec. The name cleaning by Unioncamere is very precise, as it combines standard name cleaning routines with extensive manual checks to maximize patent matches for the period of 2000-2016. We extend the Unioncamere matches backwards by applying the Unioncamere “dictionary” from 2000-2016 to the period 1990-1999. Combined, this procedure results in up to 90% of patent matches. We further increase the matching rate (especially for the 90’s) by using name cleaning routines from [Lotti and Marin \(2013\)](#) and the matched sample of patents from [Thoma et al. \(2010\)](#). Final matches result in a 93% matching rate of all EPO patents for the period of 1990-2014. We identify 13,904 unique companies who file for patents. To the best of our knowledge, this is by far the most comprehensive match of Italian patent records to Italian firms spanning the longest time period.

Third, for all patents, we extract information on their technology classification (IPC – international patent classification), application date, grant status, number of claims, and backward and forward citations. We take the application date of a patent to be the earliest application date of all patents in the same patent family.

This data allows us to construct various measures of a firm’s patenting activity considering different measures of patent qualities.

1. Clearly, whether a patent is granted or not is one type of patent quality measure. Hence, for each year, we construct a simple count of all patents and of all granted patents of a firm in a year.
2. The number of claims is another quality measure often used in the literature to proxy for patent breadth ([Lerner, 1994](#); [Lanjouw and Schankerman, 2004](#)); for each year, we construct claims-weighted patent counts of a firm.

3. We also consider patent family size as another proxy for patent quality, as it indicates the extent of the geographical protection that an applicant is seeking. Hence, another measure of firm's inventive activity in a year is family-size-weighted patent counts in a year.
4. The number of citations a patent receives has traditionally been used as a measure of the economic and technological significance of a patent (see (Pakes, 1986; Pakes and Schankerman, 1986; Trajtenberg, 1990; Hall, Jaffe and Trajtenberg, 2001; Kogan, Papanikolaou, Seru and Stoffman, 2012; Abrams, Akcigit and Popadak, 2013; Moser, Ohmstedt and Rhode, 2015)). Our main measure of a firm's inventive activity is citations-weighted patent counts. We consider different variations when constructing this measure. First, citations received clearly suffer from a truncation problem – the fact that later patents have less time to get cited. To reduce this problem, we also consider a 5-year citations measure – the number of citations received by patent within 5 years from its application date. Second, our data allows us to see whether citations reported in a patent application originate from the applicant, were introduced during the prior art search at the time of application, or were introduced by an examiner. In the data, about one third of all citations made originate from the applicants themselves. Since this may be a closer proxy for the impact of a patent, we also consider a citations measure that just counts citations made by applicants. In all these cases, we construct family-to-family citations and we also count citations originating not only from the Italian, but all EPO patents.

Appendix Table 1 presents the correlation matrix for different quality measures defined at the patent level. Though all measures are positively correlated, in many cases, the correlation is not very strong, indicating that these measures entail information on different aspects of patent quality. We show summary statistics of those measures in Appendix Table A.2.

Appendix Table A.1: Cross-correlations of Various Patent Quality Measures

Variables	Grant	Fam. size	Claims	Cits	5-yr cits	Cits, applicant
Grant	1.000					
Family size	0.410	1.000				
Claims	0.313	0.106	1.000			
Citations	0.207	0.362	0.163	1.000		
5-yr citations	0.151	0.293	0.154	0.750	1.000	
Cits, applicant	0.144	0.305	0.121	0.878	0.593	1.000
5-yr cits, applicant	0.097	0.251	0.122	0.592	0.813	0.637

Notes: Table presents a correlation matrix of different measures of patent qualities. Grant- dummy for whether patent has been granted; Family size – number of different patent applications within one patent family ID; Claims – number of patent claims; Citations – number of citations received; 5-yr citations – number of citations received within 5 years from the application date; Cits, applicant – number of citations received, excluding non-applicant citations (made by examiners or else); 5-yr cits, applicant – number of applicant-citations received within 5 years from application date.

A.3.1 Dataset #4: Registry of Local Politicians (RLP)

The following are the steps undertaken to clean and make use of RLP data.

Step 1. First, to link individual politicians to SS data on private-sector employees, we need to assign fiscal codes (similar to social security numbers in the U.S.) to politicians. In Italy, the assignment of a fiscal code follows a specific rule that deterministically assigns a fiscal code using an individual's demographic information – name, surname, date of birth, place of birth, and gender.

Appendix Table A.2: Statistics on Patent Quality for Italian Patents (1990-2014)

Variable	Average
Patent family size	5.43
Grant dummy	0.54
Number of claims	10.43
Citations received	4.94
Citations received in 5 yrs	2.00
Applicant citations	1.71
Applicant citations in 5 yrs	0.63

Notes: Table provides summary statistics for the universe of EPO patents applied by Italian firms in the 1990-2014 time period. Observation is a patent family – one or more patent applications that are the variants of the same patent. Sample contains 66,176 patent families.

We develop an algorithm following this rule, and use a detailed demographic information from RLP to assign fiscal codes to each politician.

Step 2. We determine which parties are the majority or minority based on political affiliations of politicians in RLP. The data provides either the party or coalition to which a politician is affiliated. For example, a typical example of an observation would be an entry "A | B" meaning that politician belongs to a list/coalition consisting of two parties A and B, which together participate in an election in that area. To define majorities, we first clean individual party names and then define major parties at local level.

- *Cleaning party names:*

Cleaning political party/coalition names in the data turned out to be a tedious task. The first challenge is misspellings and abbreviations of party names. The second is that political parties sometimes change their names, merge, split, form coalitions, etc. We tackle these issues by developing a name cleaning algorithm, based on information from extensive online searches and manual checks.

More specifically, in the example above with the "A | B" entry, we parse this entry into two separate party names, "A" and "B", clean each of those names separately, and then combine those names again. To clean names, we first compile a list of full names and abbreviations of parties/coalitions at all levels – municipality, province, regional or national – from Wikipedia articles. This represents a basic dictionary that helps to spot multiple forms of the same party/coalition name in the data. Next, we develop a name cleaning algorithm, where we standardize commonly used words and special characters, correct for word misspellings and shortcuts. Using this name standardization and dictionary-based approach gets us a long way in cleaning the data. Furthermore, we iteratively improve the algorithm by manually verifying and updating special cases.

- *Defining majority parties/coalitions in RLP:* Next, we define parties/coalitions that represent majorities at the regional/provincial/municipal level in a given year. We start by defining two variants of majority party variable at the location-year level. The first definition uses the political affiliation of a president/mayor. Second definition uses most frequent political affiliation of all politicians found in RLP.³⁹

³⁹For the benchmark definition, we prefer defining majority using sample of councilmen only. In effect, presi-

Specifically, we define following variables at j -location and t -year level:

Main party (RLP)_{jt} - party (coalition) of a regional president/provincial president/mayor in year t in a j region/province/municipality, respectively.⁴⁰

#1 Party (RLP)_{jt} - most frequent party (coalition) affiliation of politicians in a region/province/municipality.

Since the winning candidate is generally also assured the majority of seats, the first and second definitions should be equivalent. However, there is one main reason for why, in many cases, those definitions provide different information in RLP. Consider this example: suppose, a winning candidate belongs to a party "B" and is supported by a coalition consisting of parties "A", "B", and "C". In such a case, RLP could report the candidate's party affiliation as either "A | B | C", "B", or "Z", where "Z" is some name of a coalition.⁴¹ Often, the third variant appears. Similarly, other politicians may have an affiliation reported in one of those ways (often, the second variant appears for an ordinary council member). Hence, we combine information from both variables – an affiliation reported by a president/mayor (*Main party (RLP)_{jt}*) and most frequent affiliation reported by all politicians (*#1 Party (RLP)_{jt}*) to define the majority party/coalition in the most accurate fashion. Importantly, we will complement these definitions with further information from the Elections data, which we discuss below.

Using this data on majority parties, we can define whether individual belongs to the majority or the minority. We postpone further discussion after we describe the Elections data below.

Step 3. We define the following variables using political position attributes in RLP.

Regional Rank_{it} – a categorical variable for whether a politician i is a regional, provincial, or municipal politician at time t . In a few cases, when a politician has multiple observations in RLP at different position levels within a year, we keep the observation with the highest position level held in that year.

Hierarchical Rank_{it} – a categorical variable for the position level (within a *Regional Rank_{it}*) of a politician i at time t . In the first category, we group together the key positions of a municipality's mayor or vice mayor; provincial/regional president or a vice/president; as well as the important positions of president/vice-president of the local councils. The second category includes so called "assessore" that represent town councilors – executive position holders similar to local ministers. The third category is for regular council members.⁴²

A.3.2 Dataset #5: Elections Data

Our newly constructed, detailed dataset on local elections at the regional, provincial, and municipal levels serves two purposes. First, using information on vote shares in the election, we identify marginally contested elections. The details are described were Section 5.1. Second, we use this data to construct another variable on majority parties at the local level, and combine it with the RLP definitions of majority parties (*Main party (RLP)_{jt}* and *#1 Party (RLP)_{jt}* explained above). This gives us confidence in the accuracy of our definition of local majorities as it taps the information from multiple sources.

dent's/mayor's elections determine party composition in the councils. Hence, to determine a majority – party that has the largest representation, one needs to look at party affiliations of council members. Indeed, councilmen represent majority of politicians in RLP and about 15% of politicians in RLP are not elected.

⁴⁰If affiliation is missing (in less than 3% of cases), we use an affiliation of council president. If those are still missing, we use affiliation of a vice-president/vice-mayor or a council vice-president.

⁴¹Often, for example, coalition may be listed as "Centro Destra" (center-right), or "Lista Civica" (civil list), or using other official name of a coalition, like "Polo per le Libertà" instead of listing its members "Forza Italia", "Alleanza Nazionale" or others.

⁴²Data also includes other positions of "questore/commissario" – a super-intendent or commissioner. But these are temporary positions that appear on rare occasions, hence we do not report statistics on them.

- *Defining majority parties/coalitions in the Elections data:* For each election, we define a coalition as a set of parties supporting the same candidate (it may be just one party or multiple). Then, we define a coalition that gets most seats and define a coalition that supports a winning candidate (mayor or president). Because of the existence of a majority premium for the winning candidate, these two definitions should be equivalent. Indeed, these definitions are the same in all instances except for the rare cases, which account for well under 1% of observations. Hence, we define a variable:

Main party (Elections)_{jt} - the party or coalition that gets the most seats in an election in region/province/ municipality j at time t . It is equivalent to a party/coalition of a winning regional president/province president/municipality mayor in j at time t .

A.3.3 Combining Dataset #4 and Dataset #5 and Defining Individual Majority Affiliation

Next we describe construction of *Majority Affiliation* for each politician from RLP. For that, we combine information on local majority parties/coalitions derived from RLP – *Main party (RLP)_{jt}* and #1 *Party (RLP)_{jt}*, and from the Elections data – *Main party (Elections)_{jt}*.⁴³ There are two challenges when defining majority affiliation for individual politicians.

The first challenge has been already mentioned in Appendix A.3.1. Since, for any politician, RLP may report an affiliation with just one party (in our previous example, “B”), or a coalition (“A | B | C”), or a coalition name “Z”, there may be some noise in defining majorities just based on this data. In those cases, when, for example, mayor reports “Z”, we would not be able to classify politicians reporting “A”, “B” or “C” as belonging to mayor’s coalition. Hence, it is very useful to complement this data with information from the Elections data. The main advantage of the Elections data is that we observe all party names (“A”, “B”, and “C” separately) that form a coalition, and we also often observe an official coalition name (“Z”), if this exists. Hence, when defining majority affiliation at the individual level, we compare individual affiliation with both majority definitions from RLP and majority definition from the Elections data. This gives us confidence that majority affiliations can be defined as cleanly as possible. Extensive manual checks confirm that this definition significantly improves upon the definition based on RLP only.

The second challenge concerns politicians at the municipal level: in small municipalities, many politicians are affiliated with local political lists/coalitions – so called, civil lists, “lista civica”, that may unite various party members. As an example, in an election held in the municipality of Cecima, there were two coalitions “Lista Civica con Voi per Voi” and “Lista Civica per Cecima”. However, in RLP, both of them were reported as “Lista Civica” for short. If then both of those lists got at least one seat after the election, it would not be possible to understand whether the “Lista Civica” affiliation reported for a politician in RLP that of the winning list or not. We call such cases (elections that have multiple “Lista Civica” coalitions that got at least one seat in the council) elections with ambiguous “Lista Civica” names. Such cases are quite prevalent and represent half of all elections at the municipal level. In these ambiguous cases, if a winning party is “Lista Civica” and a politician reports “Lista Civica”, we treat individual majority affiliation as missing. This results in more than 600 thousand missing values from up to 3 million individual-level observations at the municipal level. For some of those missing cases, however, we can be certain that individuals belong to local majorities. This happens for individuals holding key positions (the highest *Hierarchical rank*). This decreases the number of missing observations in the *Majority affiliation*.

⁴³Notice that the Elections data is an unbalanced panel data with time gaps in between of elections. We impute most recent election outcomes (up to 4 years) to fill in those time gaps.

A.4 The Matched Firm-level Data (Combining Dataset #1 – Dataset #5)

A.4.1 Matching INPS with Politicians Data (Combining Dataset #1 with Datasets #4 and #5)

We merge Politicians Data with INPS worker records using individual fiscal codes over time. This allows us to identify those local politicians that are employed in private firms, while also holding political office. Appendix Table A.3 shows summary statistics for the matched politician-workers sample (in the years when they are both employed in a firm and work as politicians). We see that, among all local politicians, about one third (162,417) have ever taken a private job while also in office. Clearly, the overwhelming majority of connections are through politicians at the municipal level. This is both because majority of politicians are municipality politicians and because, proportionally, municipality-level politicians work in private sector more than other politicians. It is also interesting to look at their education levels (this is a self-reported education level from RLP). Relative to the full sample of politicians, worker-politicians, on average, have slightly lower education levels (relatively more high-school graduates than university graduates, when compared to the whole sample). The share of politicians with majority affiliation is just slightly higher among worker-politicians. In addition, by comparing with other private-sector workers, politicians are employed disproportionately more on white-collar jobs or managerial positions and have significantly higher wages.

A.4.2 Matching INPS with the Firm Financials and Patent Data (Combining Dataset #1 with Datasets #2 and #3)

We match firm-level data from INPS with Cerved using firms' fiscal codes. Many firm observations in INPS data do not match to Cerved, as can be seen from Table 3 – these are mainly small or short-lived firms not filing balance sheet information, sole-proprietorships, or household producers. On the other hand, for about 16% of observations from Cerved, firm fiscal codes were not possible to match to INPS. This means those firms did not make any INPS social security contributions for their workers – they might be employing only contractors or workers in agriculture. Finally, we merge this data with firms' patenting information from Dataset #3. Only about 4% of patents did not get matched with INPS firms. In the data, over 12 thousand firms filed a patent at least once.

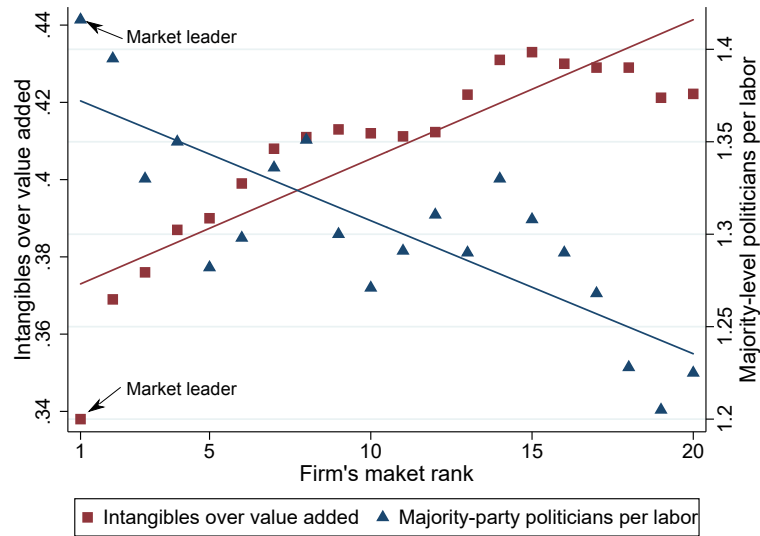
Appendix Table A.3: STATISTICS ON LOCAL POLITICIANS WORKING IN THE PRIVATE SECTOR

VARIABLES		
<i>Observations</i>	825,105	
<i>Distinct politicians</i>	162,417	
<i>Years</i>	1993 – 2014	
<i>Job in the firm:</i>	Top management	2.86%
	Middle management	6.66%
	Other white-collar job	55%
	Blue collar job	33%
	Trainee	1.25%
<i>Education:</i>	< high school	28.57%
	high school	53.09%
	University	18.29%
	Post-graduate	0.05%
<i>Average weekly pay</i>		829
POLITICAL VARIABLES		
<i>Regional Rank:</i>	Region	0.4%
	Province	2.1%
	Municipality	97.5%
<i>Hierarchical Rank:</i>	Mayor, President, Vice-mayor, Vice-president	8.63%
	Executive councilor	17.79%
	Council member	73.58%
<i>Majority Affiliation:</i>	Majority	73%

Notes: Summary statistics for the sample of politicians who work in the private sector while holding office. The table is an extended version of Table 2 but on a sample of politicians who match to INPS. Nominal variables are deflated with GDP deflator with a base year in 2014.

B Robustness and Additional Empirical Results

Appendix Figure B.1: LEADERSHIP PARADOX - REVISITED



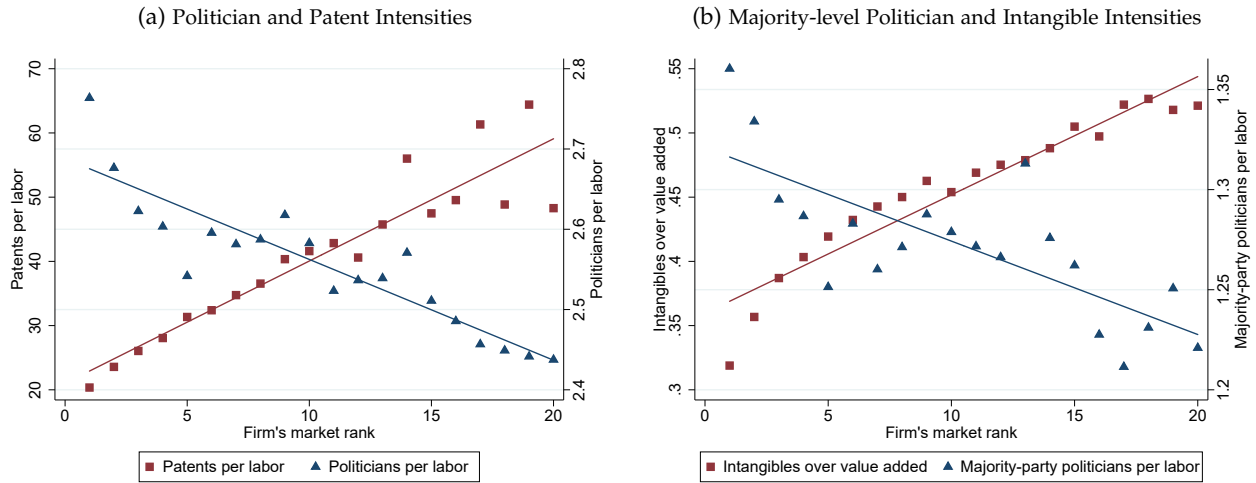
Notes: Figure plots politician intensity and innovation intensity over a firm's market rank for top 20 firms in the markets. Market is defined at (6-digit) industry \times region \times year level. Markets in which top 1 firm holds less than 10% share are excluded. Politician intensity (blue triangles) is the number of majority-member politicians employed in a firm normalized by 100 white-collar employees. Innovation intensity (red squares) is intangible assets over value added. Both outcome variables are adjusted for industry, region, and year fixed effects. The blue and red lines depict regression lines from regressing politician intensity and innovation intensity, respectively, on market rank controlling for industry, region, and year fixed effects.

Appendix Table B.1: Market Rank, Innovation, and Political Connection

	Politicians intensity	Majority politicians intensity	Intangibles intensity	Patents intensity
Rank 1	0.298*** (0.0181)	0.125*** (0.0129)	-3.485*** (0.227)	-18.71*** (0.798)
Rank 2	0.240*** (0.0191)	0.116*** (0.0136)	-1.443*** (0.239)	-16.81*** (0.972)
Rank 3	0.204*** (0.0202)	0.0734*** (0.0143)	-0.804*** (0.253)	-15.39*** (1.080)
Rank 4	0.179*** (0.0212)	0.0792*** (0.0150)	-0.442* (0.265)	-13.15*** (1.234)
Rank 5	0.163*** (0.0221)	0.0525*** (0.0157)	0.0955 (0.277)	-13.67*** (1.392)
Log age	0.0377*** (0.00331)	0.0249*** (0.00235)	-5.178*** (0.0413)	-7.186*** (0.302)
Year FE	YES	YES	YES	YES
Region FE	YES	YES	YES	YES
Industry FE	YES	YES	YES	YES
N	5441271	5441271	4962755	23409

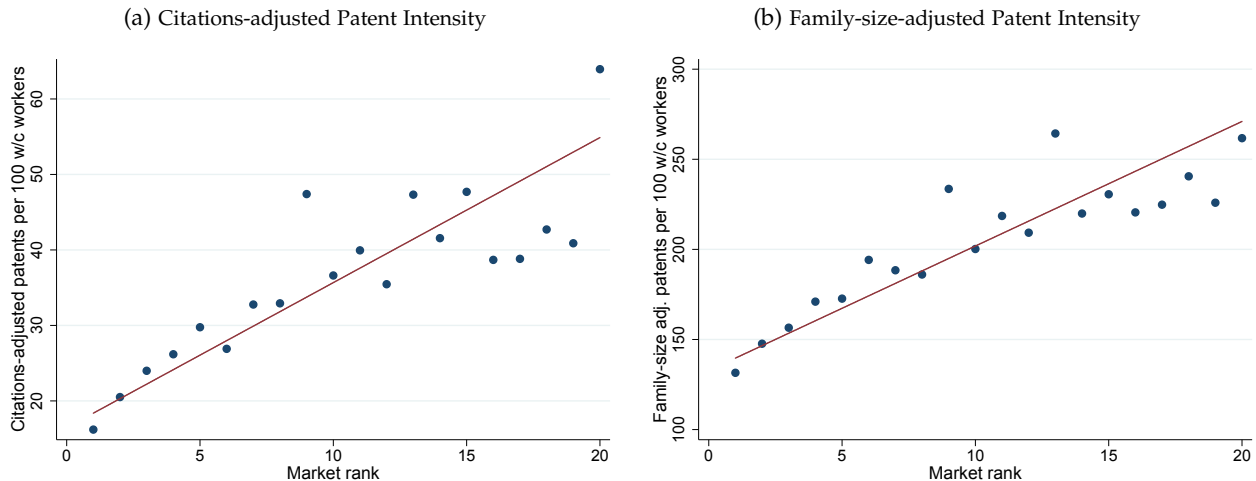
Notes: Firm-level OLS regressions of political connection and innovation intensity over firm's market rank. Market is defined at (6-digit) industry \times region \times year level. Rank n is a dummy equal to one if a firm is ranked n 'th in the market in that year based on its employment level. Omitted group pools firms that are ranked 6 and above. Dependent variables: column 1 – *Politicians intensity* is the number of politicians employed over 100 white-collar workers; columns 2 – *Majority politicians intensity* is the number of majority-party politicians employed over 100 white-collar workers; columns 3 – *Intangibles intensity* is intangibles over firm value added; columns 4 – *Patents intensity* is the number of patents (conditional on patenting) over 100 white-collar workers. All regressions control for year, region, and year dummies. * $p < 0.1$, ** $p < 0.05$, *** $p < 0.01$. Similar to Figures 4 and B.1, this table shows that the largest market leaders are more politician intensive but less innovation intensive. In addition, age has a strong effect for both connections and innovation intensities.

Appendix Figure B.2: Market Rank, Innovation, and Political Connection, with an Alternative Definition of Market Rank



Notes: Figure repeats main plots from Figures 4 and B.1 but with an alternative definition of market rank based on firms' value added. Market is defined at (6-digit) industry \times region \times year level. Markets in which the top 1 firm holds less than 10% share are dropped. In Panel (a), politician intensity (blue triangles) is the number of politicians employed in a firm normalized by 100 white-collar employees. Innovation intensity (red squares) is the number of patent applications in a year normalized by 100 white-collar employees (conditional on patenting). In Panel (b), politician intensity (blue triangles) is the number of majority-member politicians employed in a firm normalized by 100 white-collar employees. Innovation intensity (red squares) is intangible assets over value added. All outcome variables are adjusted for industry, region, and year fixed effects. The blue and red lines depict regression lines from regressing politician intensity and innovation intensity, respectively, on market rank controlling for industry, region, and year fixed effects. Market leaders are less innovation-intensive and more politician-intensive relative to their competitors.

Appendix Figure B.3: Market Rank, Innovation, and Political Connection, with Quality-adjusted Patent Intensity



Notes: Figure plots average outcome variable over firm's market rank for top 20 firms in the markets. Market is defined at (6-digit) industry \times region \times year level. Market rank is defined by a firm's employment level. Markets in which top 1 firm holds less than 10% share are dropped. Outcome variables are demeaned with industry, year, and region fixed effects. The red line depicts a regression line from regressing firm's outcome on market rank, controlling for industry, region, and year fixed effects. In Panel (a) the outcome is 5-year citations-adjusted patent counts per 100 white-collar workers; Panel (b) considers patent family size-adjusted patent counts per 100 white-collar workers. Market leaders produce lower quality-adjusted innovation, when compared to their competitors.

Appendix Table B.2: GROWTH IN SIZE VERSUS PRODUCTIVITY

— Panel A. Growth in Size —				
<i>Dependent variable – Growth in:</i>	Employment	Value added	Profits	Employment white-collar
Connection Dummy	0.0432*** (0.00122)	0.0148*** (0.00158)	0.0284*** (0.0135)	0.0312*** (0.106)
Age, Size, Assets	Yes	Yes	Yes	Yes
Firm FE	Yes	Yes	Yes	Yes
Observations	6585740	5710338	5983604	5237358
— Panel B. Growth in productivity —				
<i>Dependent variable – Growth in:</i>	LP	TFP	Intangibles	Patents
Connection Dummy	-0.0305*** (0.00175)	-0.0209*** (0.00140)	-0.0510*** (0.0112)	-0.00415 (0.00383)
Age, Size, Assets	Yes	Yes	Yes	Yes
Firm FE	Yes	Yes	Yes	Yes
Observations	5623077	5291979	5538995	73180

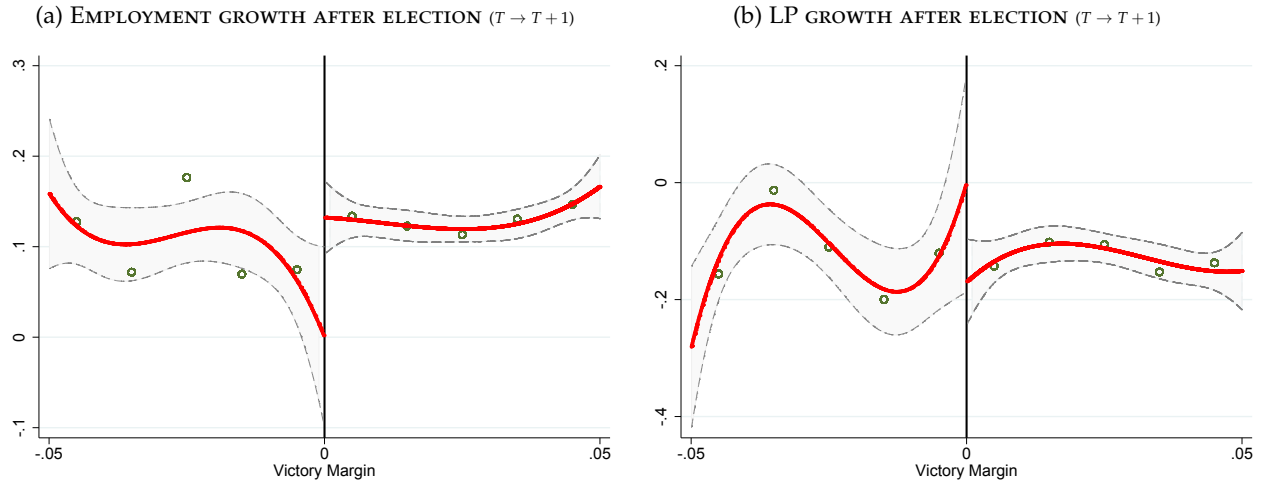
Notes: Table summarizes a positive association of firm-level political connections with the next-period growth in size (Panel A) and a negative association of connections with the next-period growth in productivity of a firm (Panel B). Dependent variables for the growth in size in Panel A are employment, value added, profits, and white-collar employment growth. Dependent variables for the growth in productivity in Panel B are labor productivity, TFP, share of intangibles (intangibles over value added), and patents growth. Since patenting is a slow-moving process, we look at the average (annualized) 3-year patent growth of firms.

Appendix Table B.3: Politicians' Within-Firm Within-Group Wage Premium

	MUNICIPALITY LEVEL POLITICIANS		PROVINCE LEVEL POLITICIANS	
	Female	Male	Female	Male
Blue-collar	1.06	1.08	1.15	1.04
White-collar	1.10	1.10	1.19	1.19
	REGIONAL LEVEL POLITICIANS		HIGH-RANK POLITICIANS	
	Female	Male	Female	Male
Blue-collar	.	.	1.09	1.08
White-collar	2.08	1.57	1.25	1.18

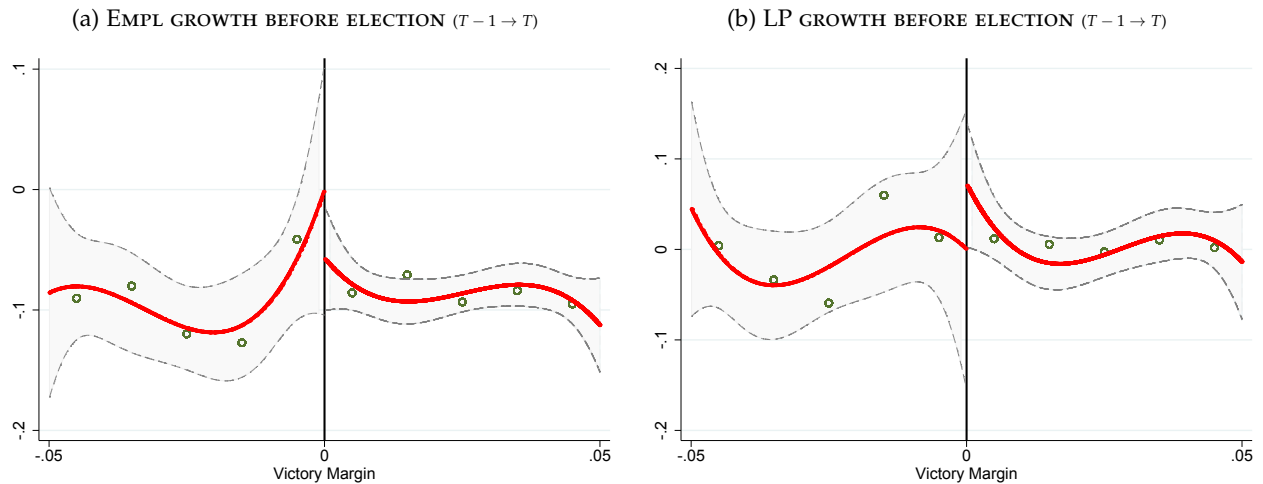
Notes: Table shows politicians' within-firm wage premium, by type of job and gender. Premium in each cell is defined as the weekly wage paid to politicians, divided by the average weekly wage paid to non-politicians within the same firm, conditional on the same type of job and gender. Four different panels present wage premiums calculated for politicians at the municipal level, provincial level, regional level, and high-rank politicians, respectively. Cells are empty if the number of observations in that cell is less than 100.

Appendix Figure B.5: Employment and LP Growth after Election, RD. 5% Margin of Victory Sample.



Notes: Figure plots a firm's growth from T to $T + 1$ against margin of victory at time T for the sample of elections within a 5% margin of victory. Positive margins of victory denote firms that have been connected at time $T - 1$ with a politician from a party that won an election at time T with the corresponding margin of victory. Likewise, negative margins of victory depict firms that are connected with losing politicians. For visibility, we divide the x -axis into 0.01-wide intervals of the margin of victory at time T and each point denotes the average outcome for firms in that interval. The solid lines represent predicted third order polynomial fits from a regression that includes third order polynomial in the margin of victory, a dummy Win_{iT-1} , and an interaction of the dummy with the polynomial (a regression in equation 2 that excludes additional controls). The dashed lines represent 90% confidence intervals. Outcome variable in Panel (a) is employment growth, while in Panel (b) is labor productivity growth. Figures are normalized such that outcome variables for marginal losers at the threshold are equal to zero.

Appendix Figure B.6: Pre-Trend: Employment and LP Growth before Election. 5% Margin of Victory Sample.

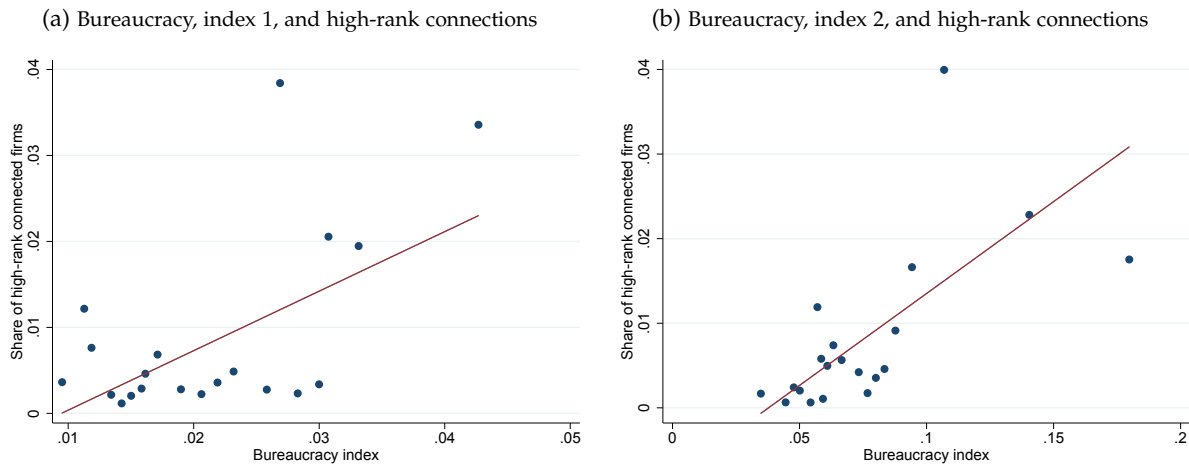


Notes: Figure plots a firm's growth from $T - 1$ to T against margin of victory at time T for the sample of elections within a 5% margin of victory. Positive margins of victory denote firms that have been connected at time $T - 1$ with a politician from a party that won an election at time T , with the corresponding margin of victory. Likewise, negative margins of victory depict firms that are connected with losing politicians. For visibility, we divide the x -axis into 0.01-wide intervals of the margin of victory at time T , and each point denotes average outcome of firms in that interval. The solid lines represent predicted third order polynomial fits from a regression that includes third order polynomial in margin of victory, a dummy Win_{iT-1} , and an interaction of the dummy with the polynomial (a regression in equation 2 that excludes additional controls). The dashed lines represent 90% confidence intervals. Outcome variable in panel (a) is employment growth, while panel (b) depicts labor productivity growth. Figures are normalized such that outcome variables for marginal losers at the threshold are equal to zero.

Alternative Definition of the Bureaucracy Index

We construct an alternative *Bureaucracy Index 2*, which is similar to our benchmark *Bureaucracy Index*, but with a wider list of keywords. Our extended list of keywords combines the previous list of “regulation*, regulated, regulator*, bureaucracy, bureaucratic, deregulation, deregulated, paperwork*, red tape, license*” with the following list of additional words: “authority, authorities, liberaliz*, reform*, Agency, Agencies, Commission, Commissions, policy maker*, policymaker*, government, official form*, official procedure*.” The * character denotes that variations of these words were also included. Figure B.7 presents the correlation between the share of firms connected with high-rank politicians at the industry level with both bureaucracy indices. The correlations are positive and strong.

Appendix Figure B.7: Bureaucracy and Connections across Industries



Notes: The binscatter plots with linear fits of the share of connected firms with high-rank politicians against the Bureaucracy Index for all sectors available in Factiva News search. Sector-level Bureaucracy Index is defined in equation 4 and is the share of newspaper articles in a sector that have certain keywords related to bureaucracy or regulation. Panel (a) uses the benchmark Bureaucracy Index from the main text, while panel (b) uses Bureaucracy Index 2.

Appendix Table B.4: Connections and Bureacracy Index across Industries

<i>Code</i>	<i>Industry description</i>	<i>Connection intensity</i>	<i>High-rank connection intensity</i>	<i>Bureacracy Index 1</i>	<i>Bureacracy Index 2</i>
E36	Water Utilities	0.254	0.065	0.046	0.159
K64	Banking/Credit or Investment/Securities	0.222	0.075	0.027	0.110
D	Electricity/Gas Utilities	0.155	0.032	0.033	0.191
C12	Tobacco Products	0.146	0.005	0.028	0.092
C21	Pharmaceuticals	0.139	0.024	0.031	0.087
C24	Primary Metals	0.119	0.026	0.011	0.057
J61	Telecommunication Services	0.114	0.040	0.031	0.095
B	Mining/Quarrying	0.101	0.008	0.011	0.057
C29	Motor Vehicles or Motor Vehicle Parts	0.099	0.008	0.017	0.062
C11	Beverages/Drinks	0.083	0.005	0.023	0.059
C19	Downstream Operations	0.080	0.015	0.012	0.071
E38	Waste Treatment/Disposal	0.060	0.005	0.013	0.085
C26	Computer Hardware/Consumer Electronics	0.059	0.005	0.023	0.060
C22	Rubber Products or Plastics Products	0.057	0.009	0.018	0.058
C20	Chemicals	0.057	0.006	0.026	0.081
C28	Machinery	0.051	0.005	0.015	0.051
A	Agriculture	0.049	0.009	0.011	0.063
C27	Batteries/Electric Lighting Eqpm/Electrical Components	0.047	0.005	0.021	0.064
F42	Heavy Construction Not Sewer Construction	0.041	0.005	0.022	0.104
N	Rental/Leasing/Recruitment Services/Admin/Support Serv	0.040	0.004	0.016	0.082
J58	Publishing	0.039	0.007	0.031	0.076
C17	Paper/Pulp	0.039	0.004	0.022	0.047
H	Transportation/Logistics or Postal Service	0.036	0.005	0.020	0.096
C23	Building Materials/Products or Glass/Glass Products	0.036	0.003	0.017	0.059
J62	Computer Services	0.034	0.004	0.016	0.071
E37	Sewer Construction or Wastewater Treatment	0.033	0.003	0.016	0.169
C30	Aerospace/Defense or Shipbuilding or Railroads	0.032	0.005	0.016	0.079
C33	Machinery Repair/Maintenance/Aircraft Maintenance Serv	0.028	0.002	0.040	0.076
C13	Textiles	0.026	0.002	0.030	0.061
R	Theaters/Entertainment Venues/Libraries/Archives	0.024	0.003	0.035	0.090
F41	Building Construction	0.022	0.001	0.014	0.059
J59	TV Program/Sound/Music Recording/Publishing	0.022	0.001	0.021	0.059
J63	Online Service Providers	0.019	0.002	0.025	0.077
C15	Leather Goods	0.018	0.002	0.011	0.028
C31	Furniture	0.018	0.001	0.015	0.037
J60	Broadcasting	0.018	0.001	0.029	0.086
I55	Lodgings	0.017	0.001	0.027	0.073
C16	Wood Products	0.016	0.001	0.014	0.044
C25	Metal Products	0.016	0.001	0.008	0.048
C32	Jewelry/Musical Instruments/Sport Goods/Games	0.016	0.001	0.030	0.065
C18	Printing	0.015	0.002	0.014	0.039
M	Legal and Professional	0.015	0.002	0.027	0.145
C10	Food Products	0.014	0.001	0.022	0.064
G46	Wholesalers Non-Auto/Auto Part Wholesale	0.014	0.001	0.016	0.055
C14	Clothing	0.013	0.002	0.028	0.057
K	Financial Services	0.011	0.001	0.031	0.118
L68	Real Estate	0.011	0.000	0.011	0.048
G45	Motor Vehicle Dealing/Repair/Maintenance/Auto Stores	0.009	0.000	0.018	0.053
F43	Special Trade Contractors or Building Refurbishment	0.009	0.000	0.010	0.044
G47	Retail Non-Auto Parts/Tire Stores Not Auto Dealing	0.007	0.000	0.013	0.046
I56	Bars/Public Houses or Restaurants/Cafes	0.005	0.000	0.015	0.051
E39	Waste Management/Recycling Services	0.003	0.000	0.020	0.080

Notes: Table reports measures of connections and the bureaucracy indices across industries. Industry codes are based on classifications from the Factiva News search and the codes correspond to NACE Rev 2 classification. Column 3 reports the average share of connected firms in an industry. Column 4 reports the average share of high-rank connected firms in an industry. Columns 5 and 6 report Bureacracy Index 1 and Index 2, respectively. The indices show the average share of newspaper articles about a sector from Factiva News search that mention government regulation- or bureaucracy-related words. Industry-level Bureacracy Index 1 is our benchmark index defined in Section 7, while Bureacracy Index 2 is defined in Section B.

C Model Extension: Endogenizing Politician's Wage

Our benchmark model in the main text has focused on the static gains and dynamic losses. To keep these aspects tractable, we kept the determination of the politician's wage exogenous. However, it is fairly straightforward to incorporate a Nash bargaining framework that would provide some additional insights. To this end, let us assume that politicians have different political powers $\phi \in (0, 1)$ – in line with their hierarchies, as defined in Section 3. A politician with a political power ϕ is able to remove red tape by the same fraction, thus its firm has to pay $(1 + (1 - \phi)\tau)wl$ for hiring l workers (hence, our benchmark model corresponds to $\phi = 1$). This implies that a firm with a politician with power ϕ earns the following gross profit:

$$\frac{\pi q}{1 + (1 - \phi)\tau}.$$

Denote the bargaining power of the politician by γ and assume his/her outside value is simply $\eta(\phi)$, where $\eta'(\phi) > 0$. For simplicity, we also assume that the firm's outside option is to operate without a politician, hence $V_{-1}(q)$. Once the firm and the politician decide to work together, they stay together until the firm is replaced by another firm. It is also convenient to formulate the problem in terms of the lump-sum compensation of the politician, which we denote by \bar{w}^p . We denote the dynamic value of being connected to a ϕ -power politician (including politician's compensation) by V_1^ϕ and of not being connected by V_{-1} . Then the Nash bargaining problem is simply

$$\begin{aligned} \bar{w}^p(\phi) &\equiv \arg \max_{\bar{w}^p(\phi)} \left[V_1^\phi(q) - V_{-1}(q) - \bar{w}^p(\phi) \right]^{1-\gamma} [\bar{w}^p(\phi) - \eta(\phi)]^\gamma \\ &= \gamma \pi q \left(\frac{1}{[1 + (1 - \phi)\tau][r + \tilde{p}(\phi)]} - \frac{1}{[1 + \tau][r + p]} \right) + (1 - \gamma) \eta(\phi), \end{aligned} \quad (15)$$

where $\tilde{p}(\phi)$ is creative destruction rate faced by a firm connected with ϕ -power politician, while p is creative destruction rate faced by a non-connected firm. Note that by hiring a politician with ϕ , the incumbent manages to generate a cost advantage equal to $\phi\tau$. Hence, the quality threshold for the creative destruction to take place becomes

$$\lambda^*(\phi) = \phi\tau.$$

This time, the rate at which a connected incumbent gets replaced is

$$\tilde{p}(\phi) = p[\alpha + (1 - \alpha) \Pr(\lambda > \phi\tau)],$$

which implies $\tilde{p}'(\phi) < 0$. This leads us to the following prediction:

Prediction 5 *A firm that is connected to a more powerful politician is more likely to survive.*

Next, we interpret the compensation of the politician as a function of its political power. The compensation $\bar{w}^p(\phi)$ increases in ϕ through three channels evident from equation (15): first, a more powerful (large ϕ) politician brings higher static profits due to lower wedges $((1 - \phi)\tau)$ that the firm is required to pay. Second, a more powerful politician leads to lower replacement rate of the incumbent ($\tilde{p}(\phi)$). Finally, a more powerful politician has a better outside option, which allows him/her to extract a bigger fraction of the joint surplus. We conclude this section with the following prediction.

Prediction 6 *Politician's compensation $\bar{w}^p(\phi)$ increases in his/her political power ϕ .*