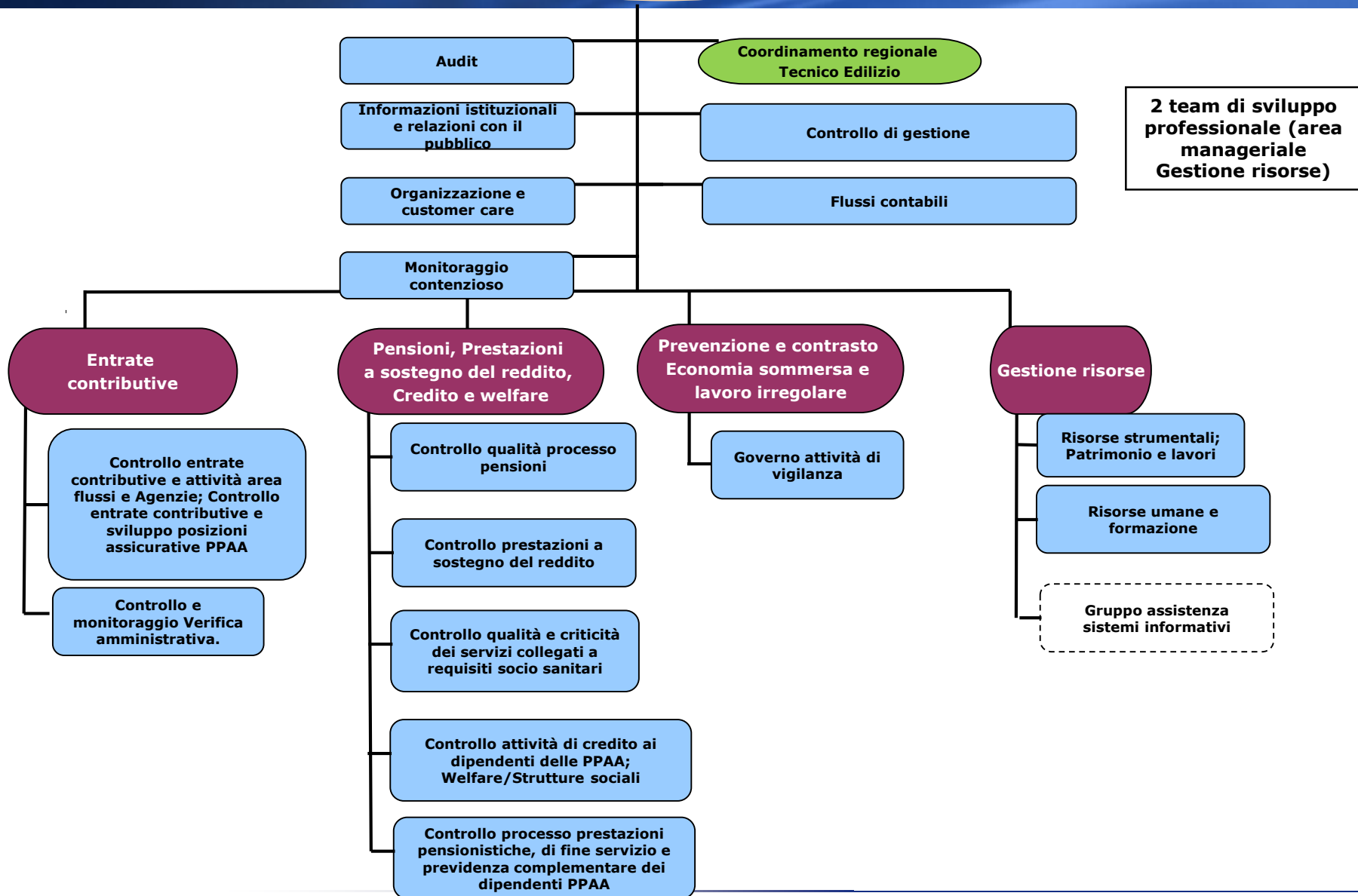
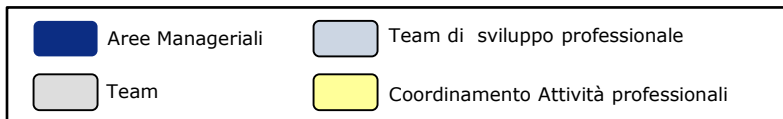
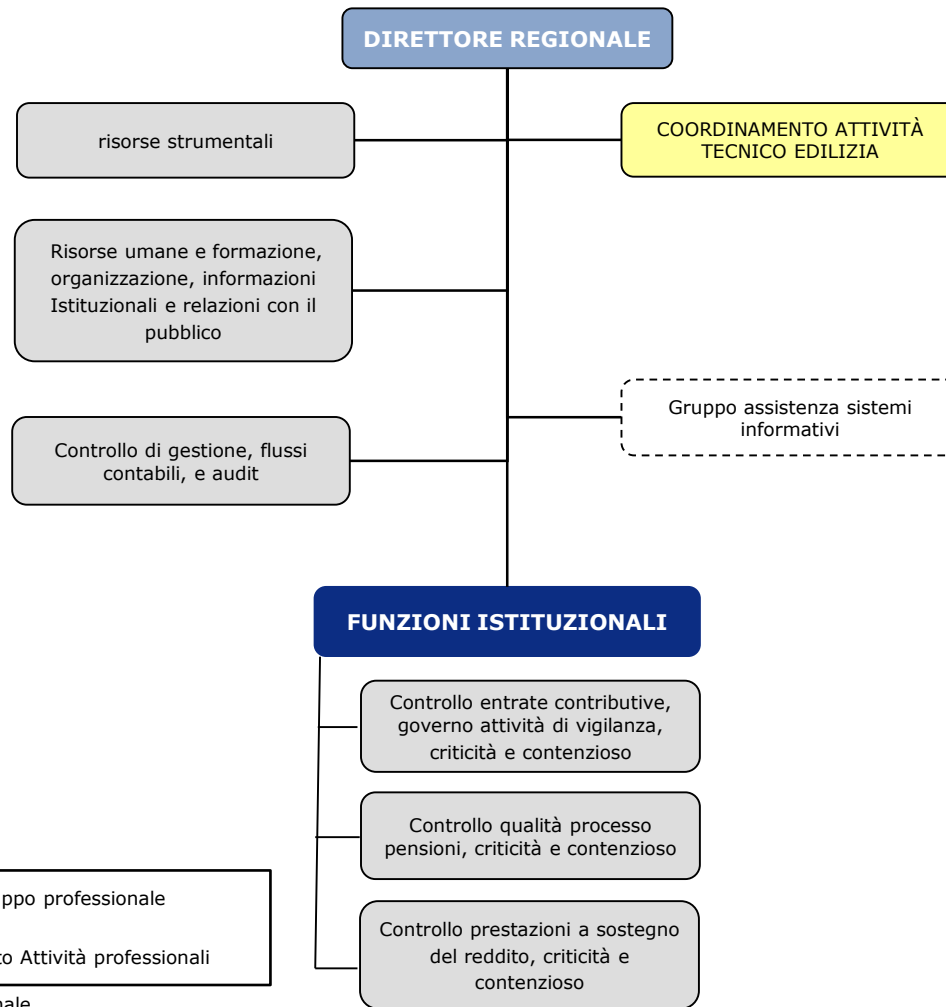
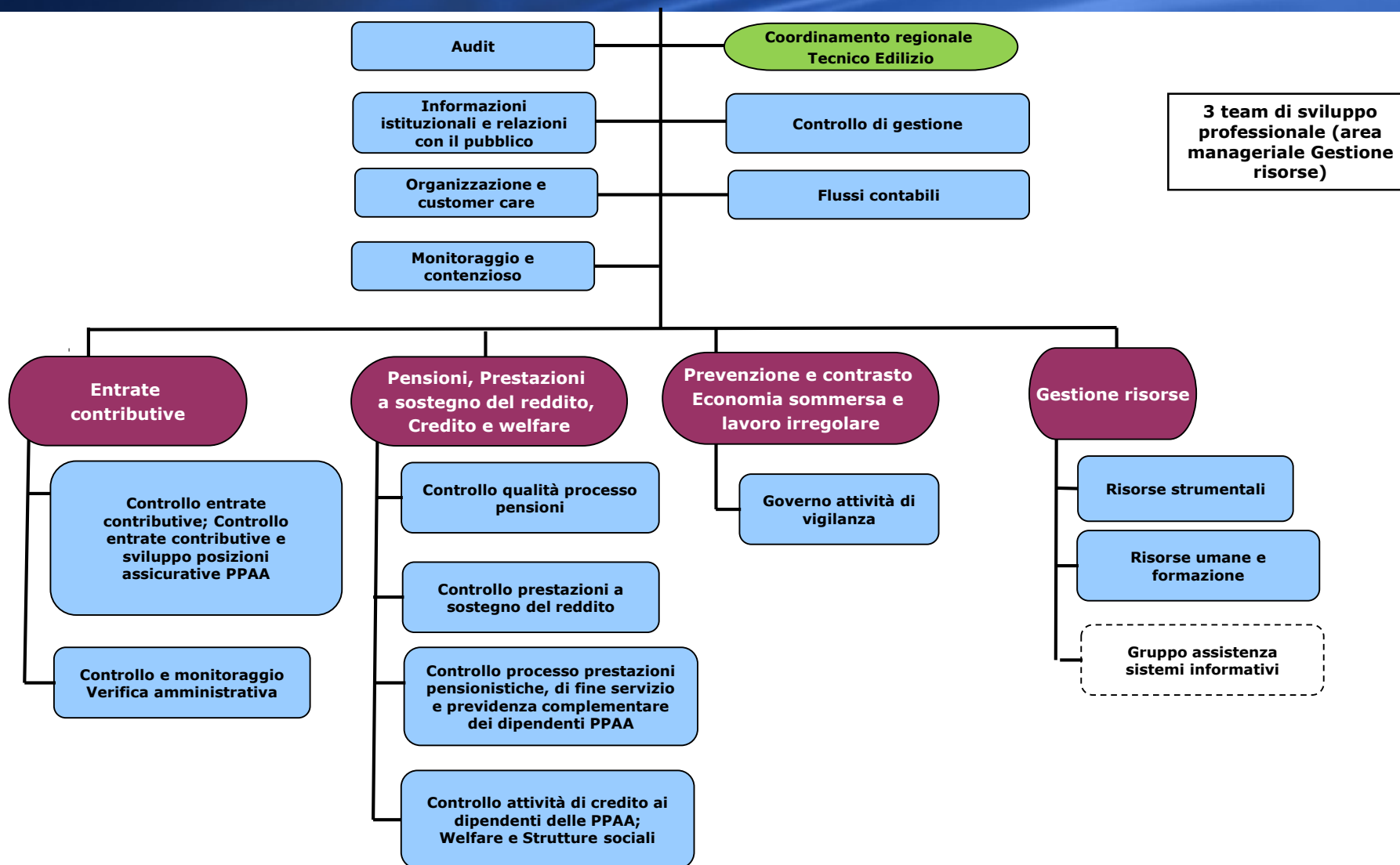


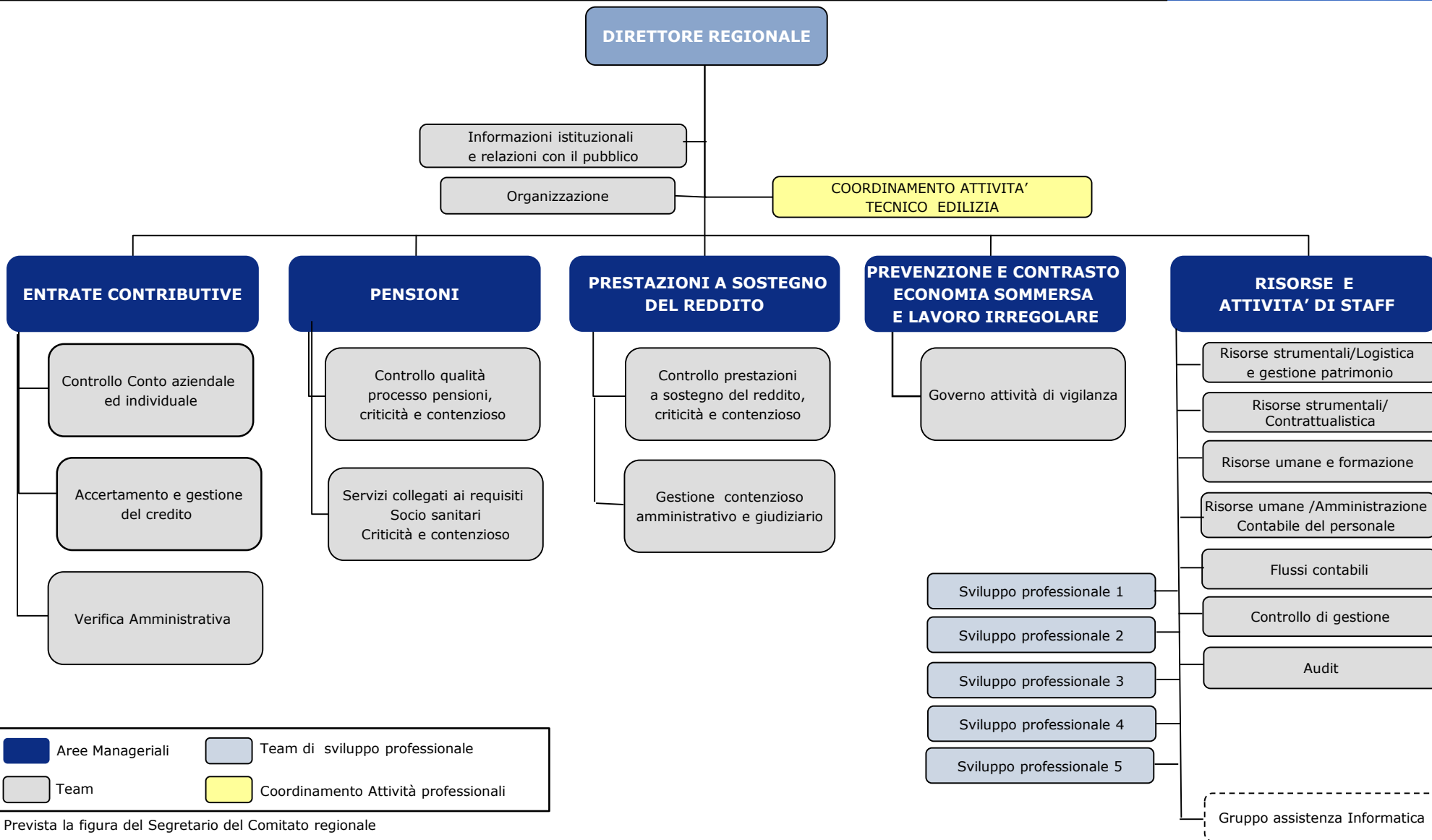
## Direzione regionale (complessità B)



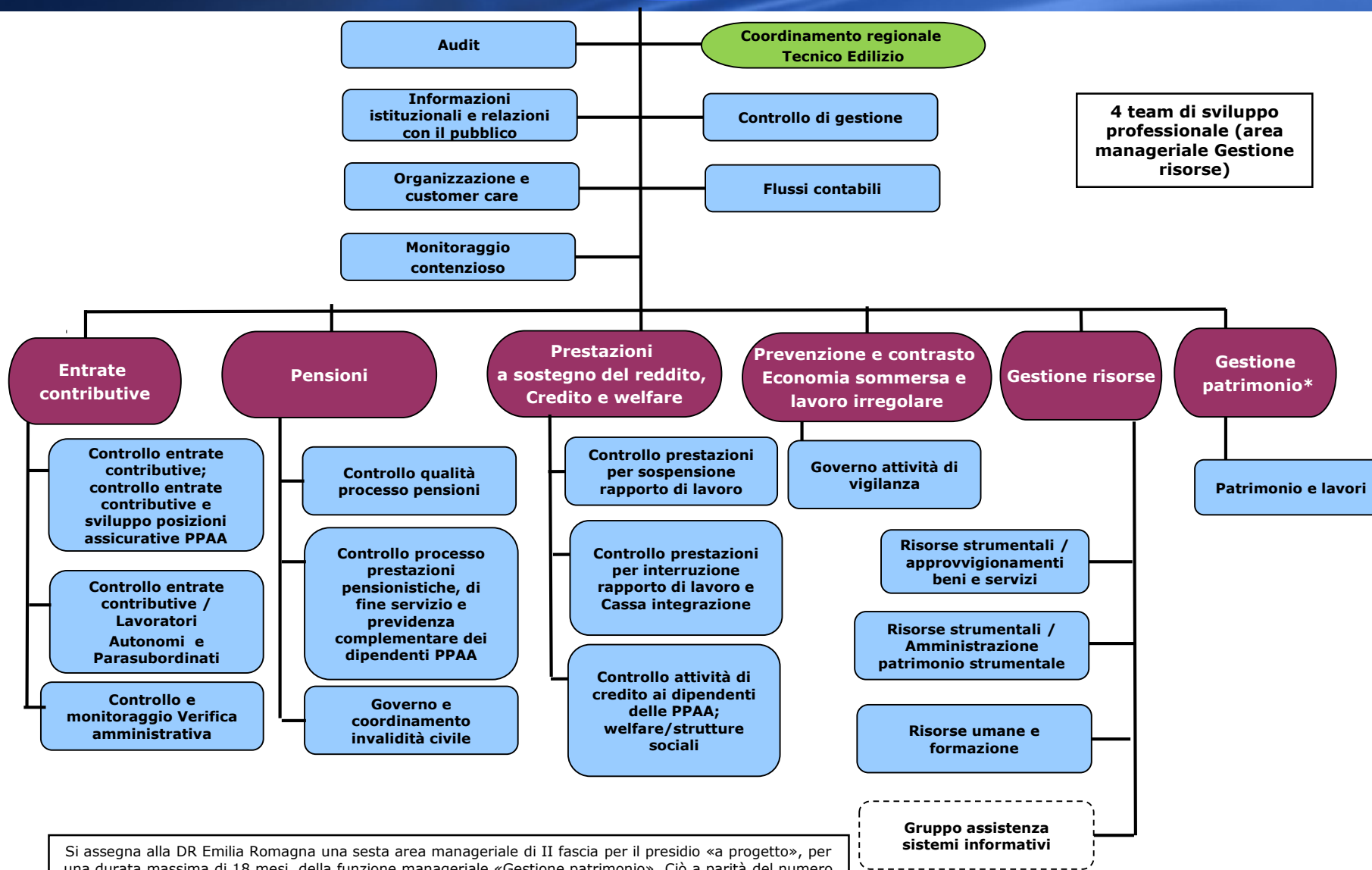


▪ Prevista la figura del Segretario del Comitato regionale

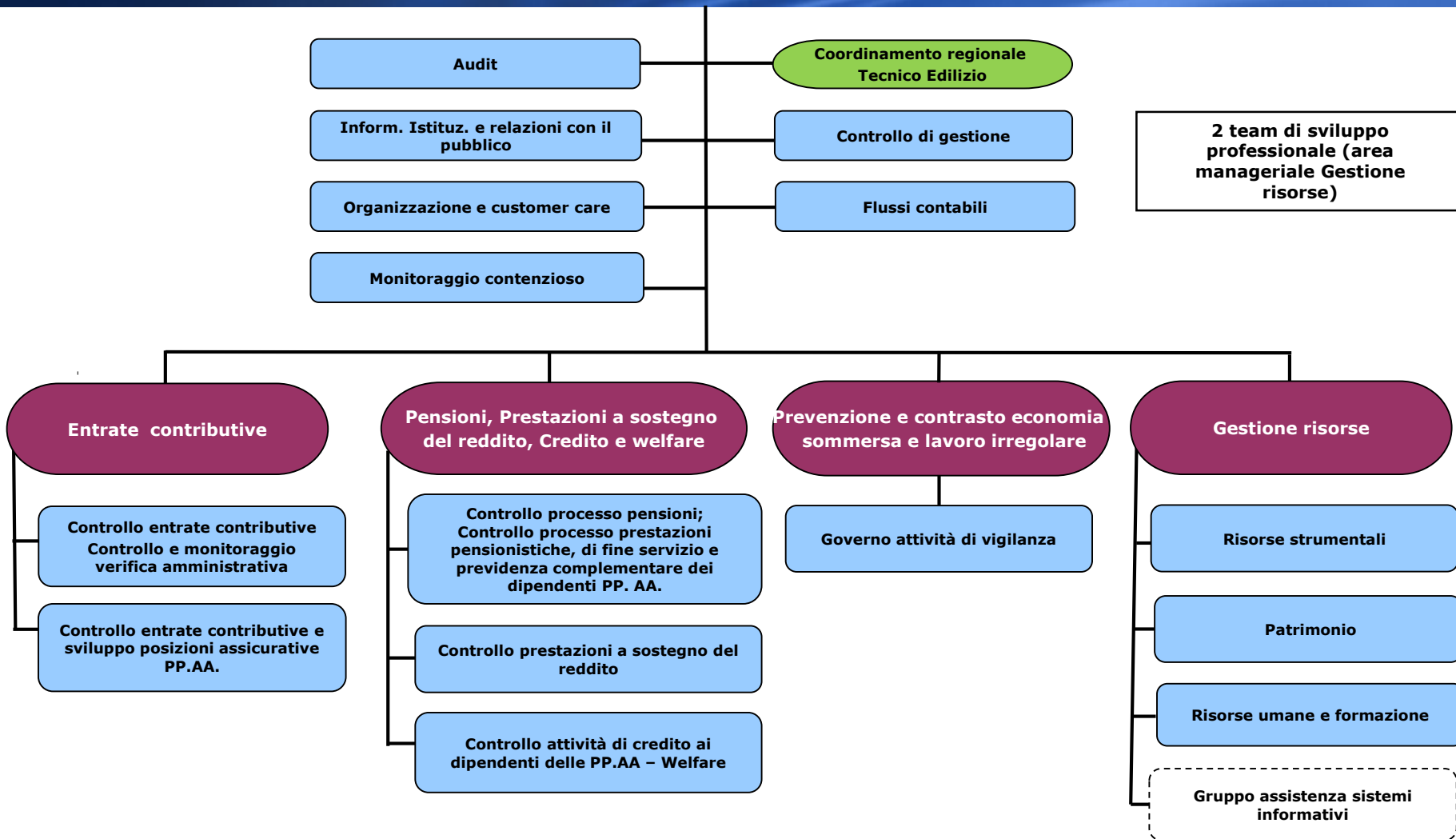


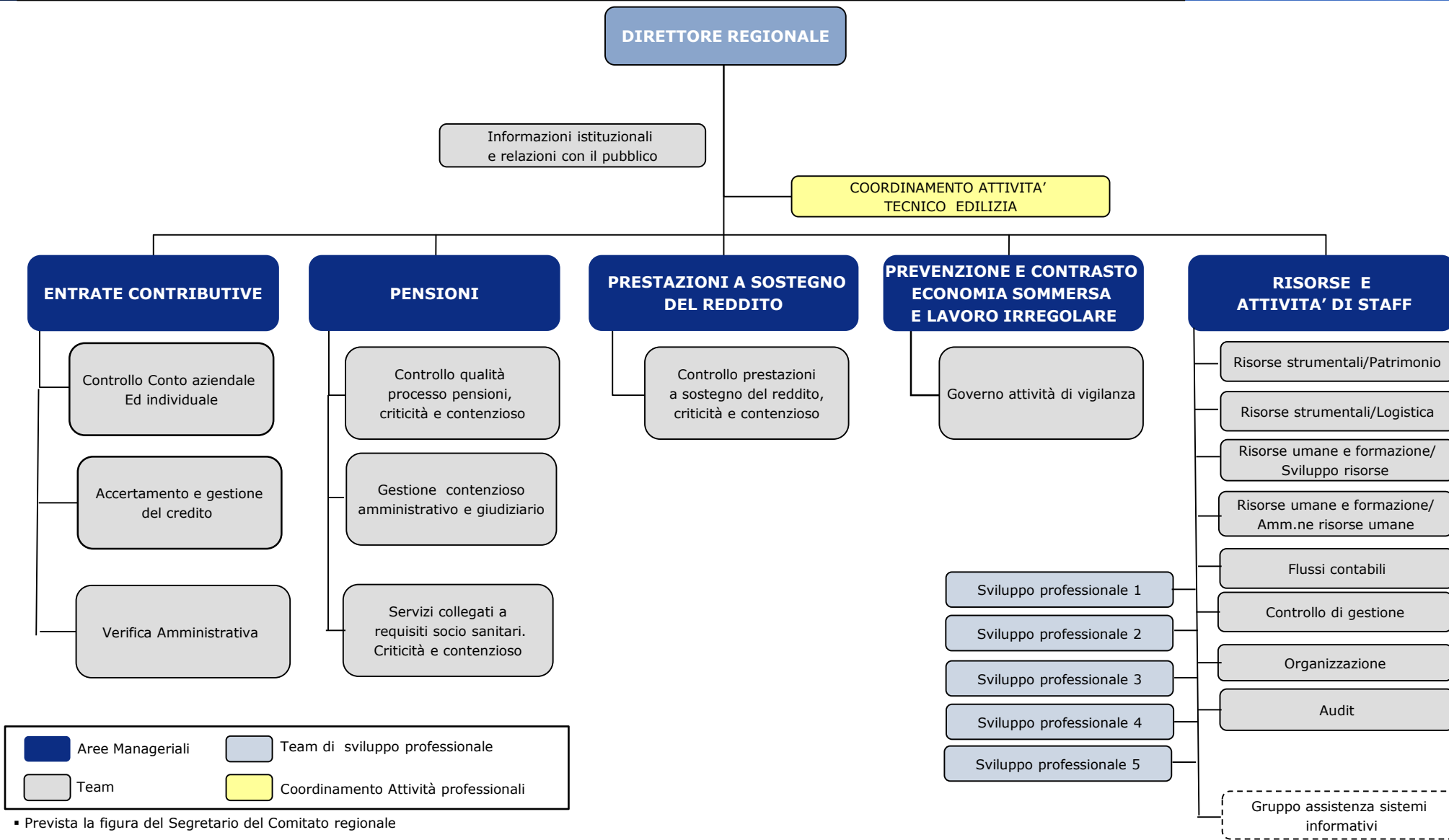


## Direzione regionale (complessità A)

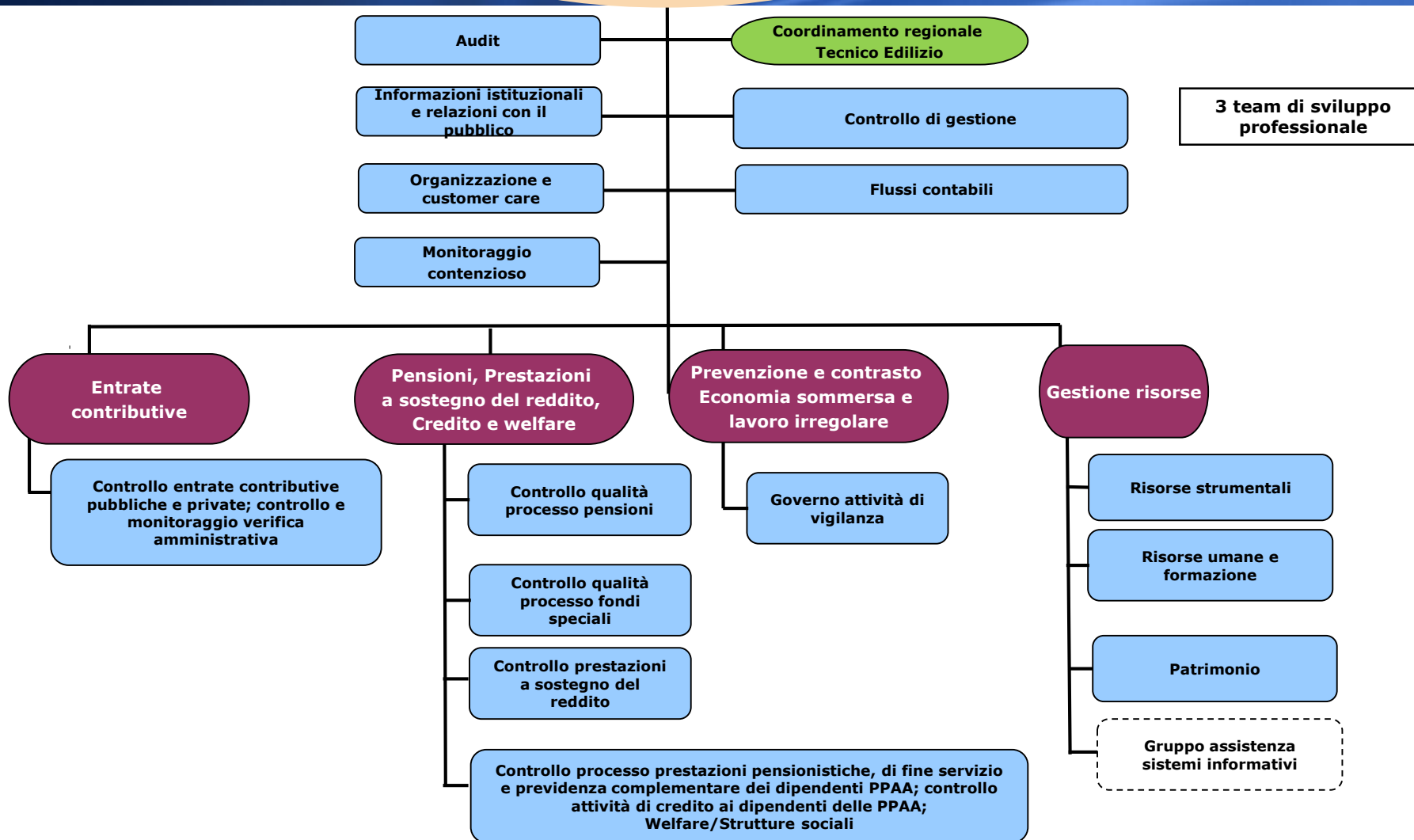


Si assegna alla DR Emilia Romagna una sesta area manageriale di II fascia per il presidio «a progetto», per una durata massima di 18 mesi, della funzione manageriale «Gestione patrimonio». Ciò a parità del numero complessivo di aree manageriali di II fascia assegnate alle strutture dell'Emilia Romagna che, in questa fase di sperimentazione è pari a 28

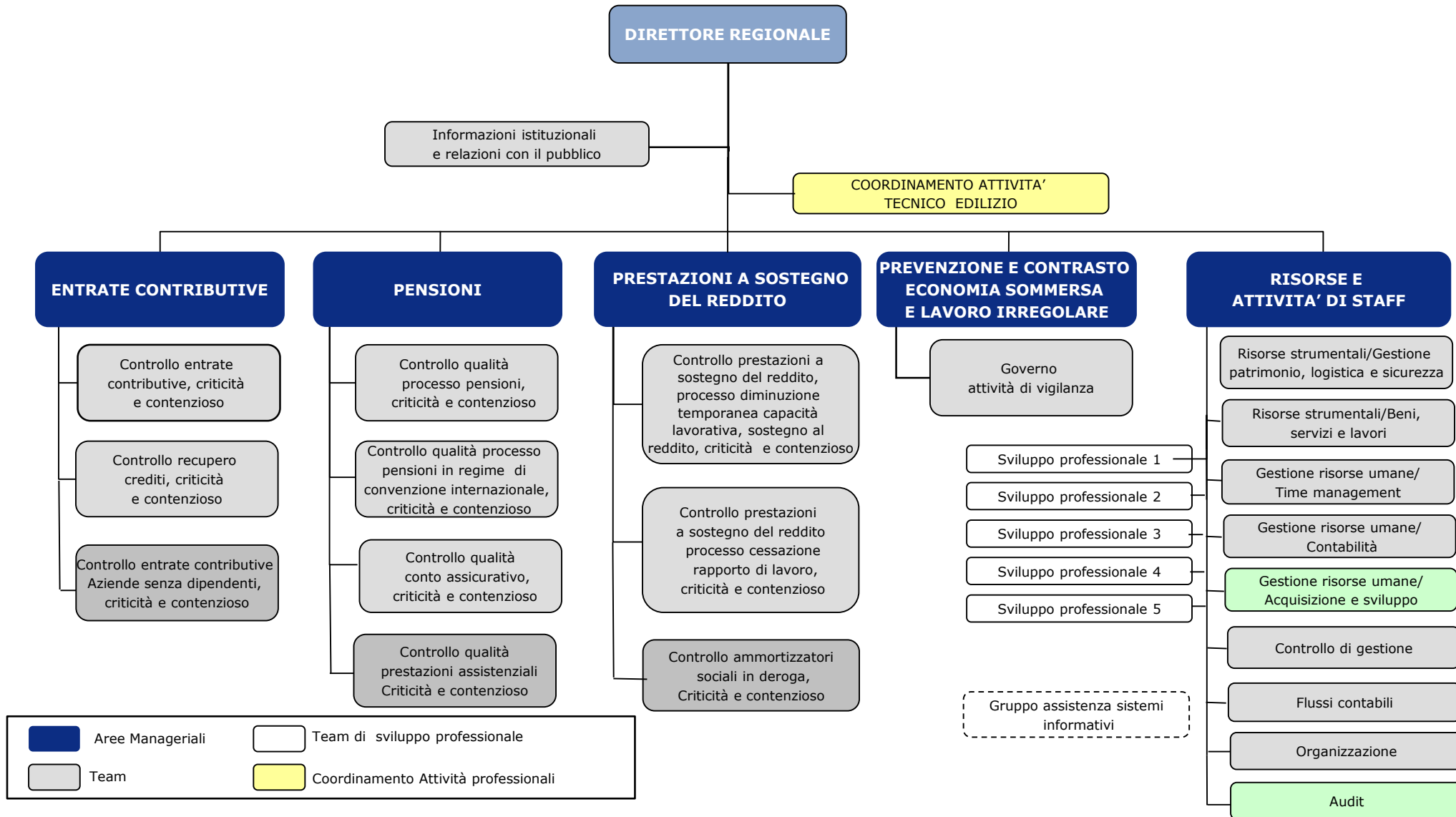




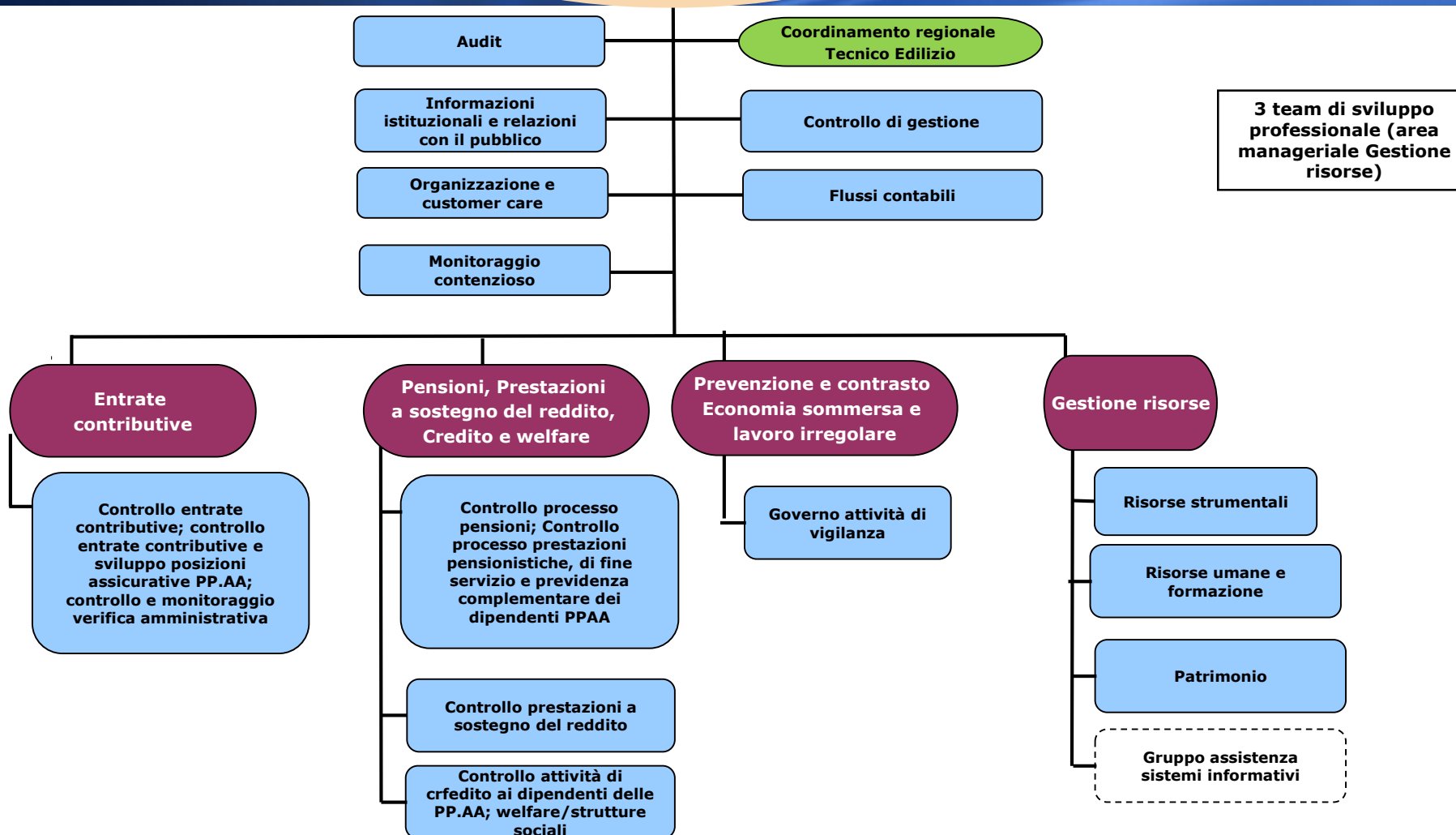
## Direzione regionale (Complessità B)

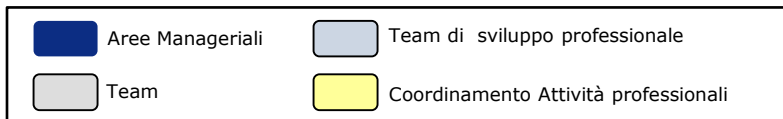
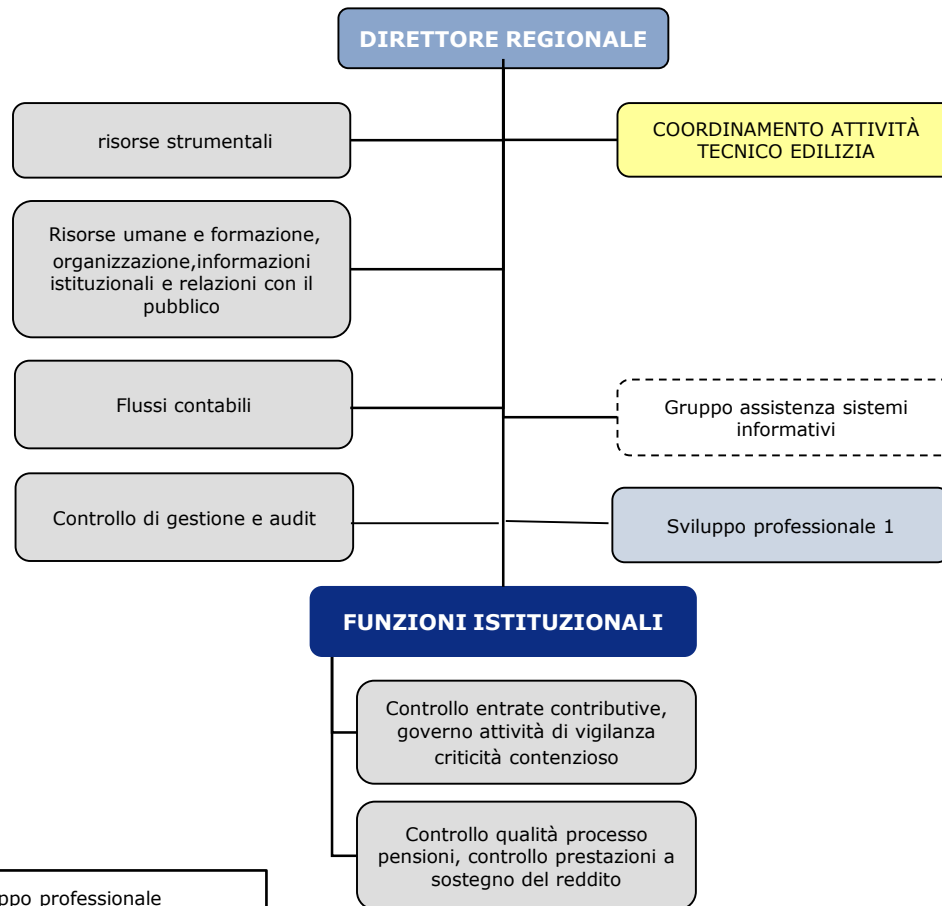




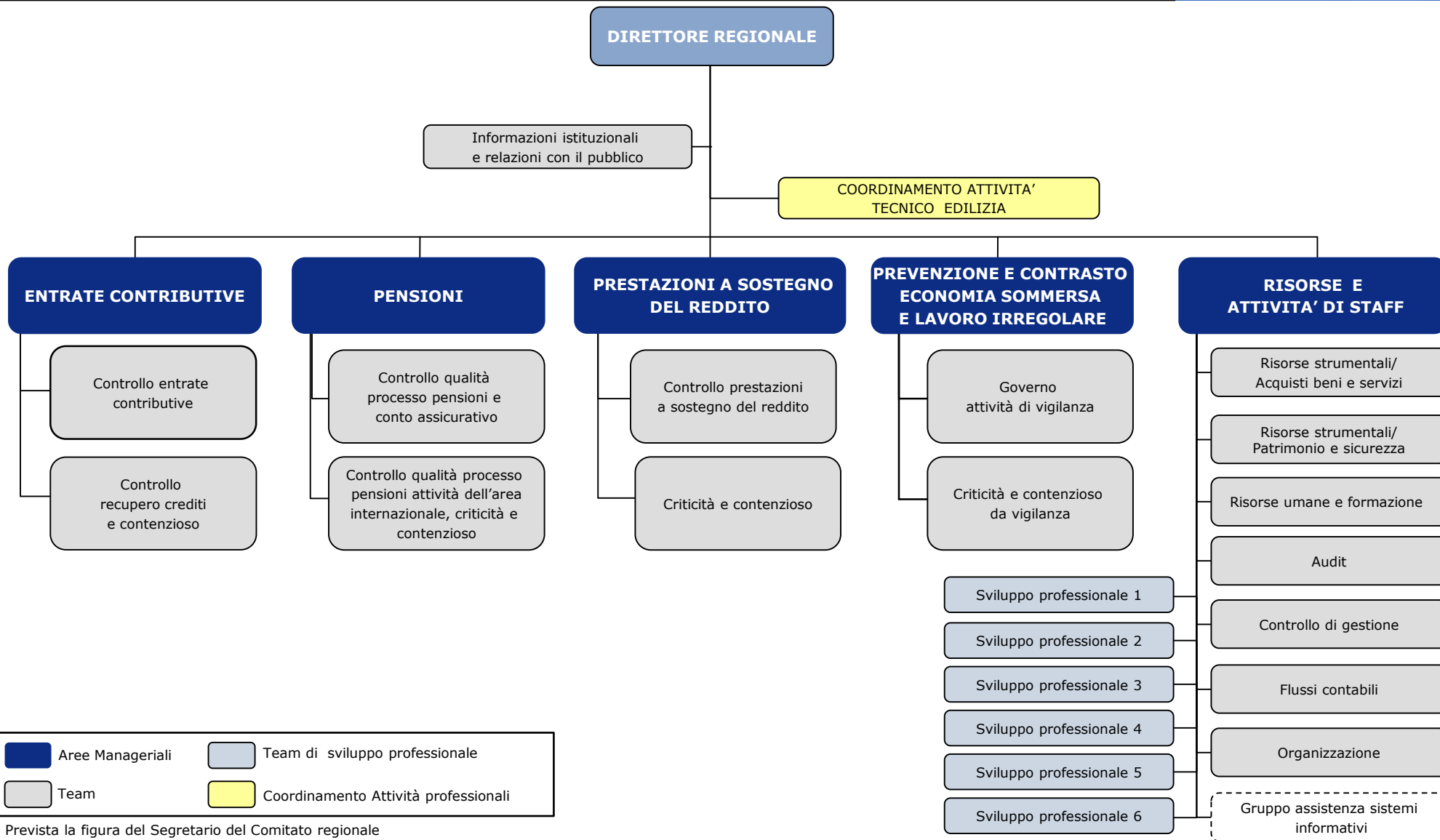


## Direzione regionale (complessità B)

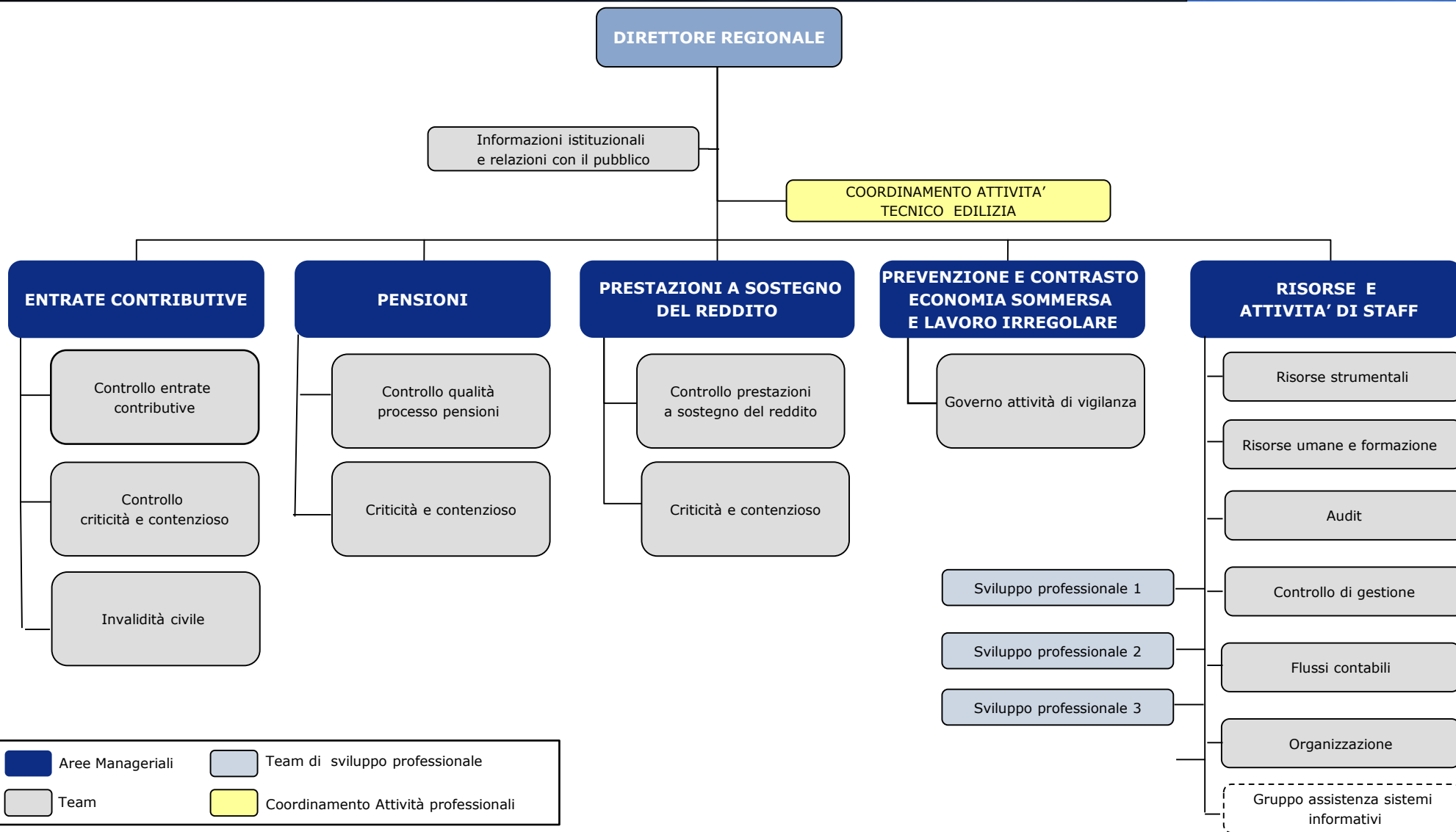




▪ Prevista la figura del Segretario del Comitato regionale

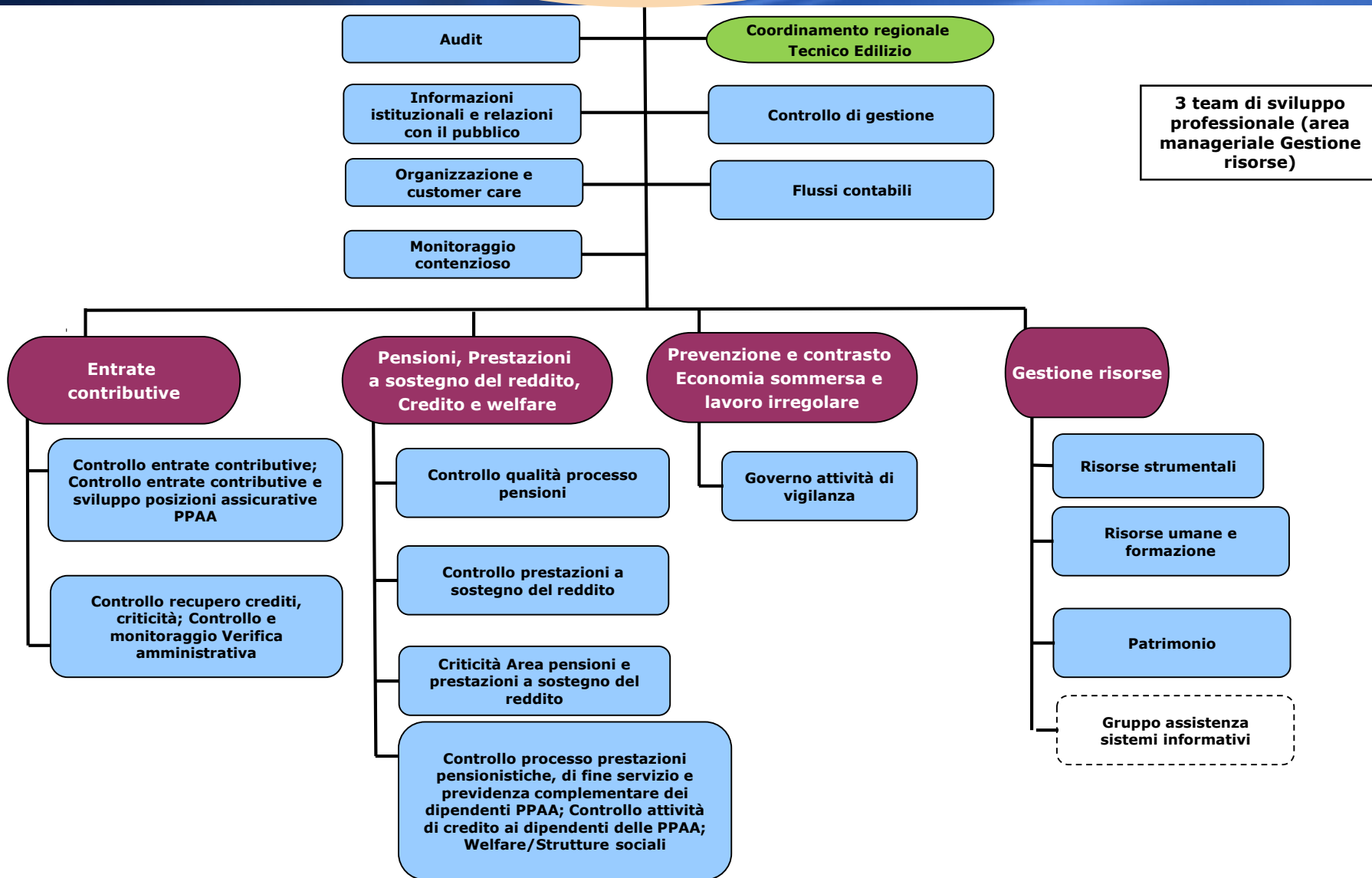


▪ Prevista la figura del Segretario del Comitato regionale

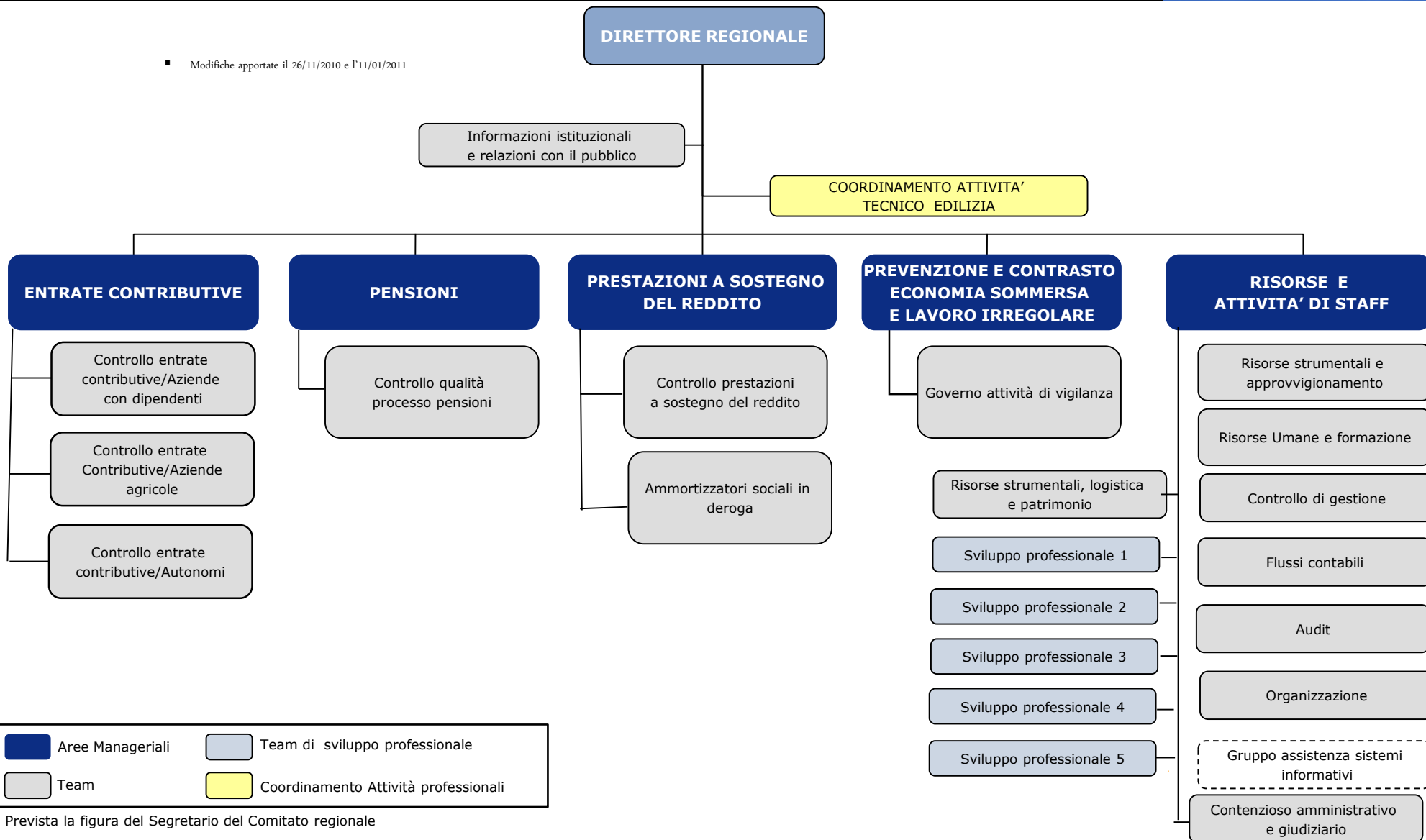


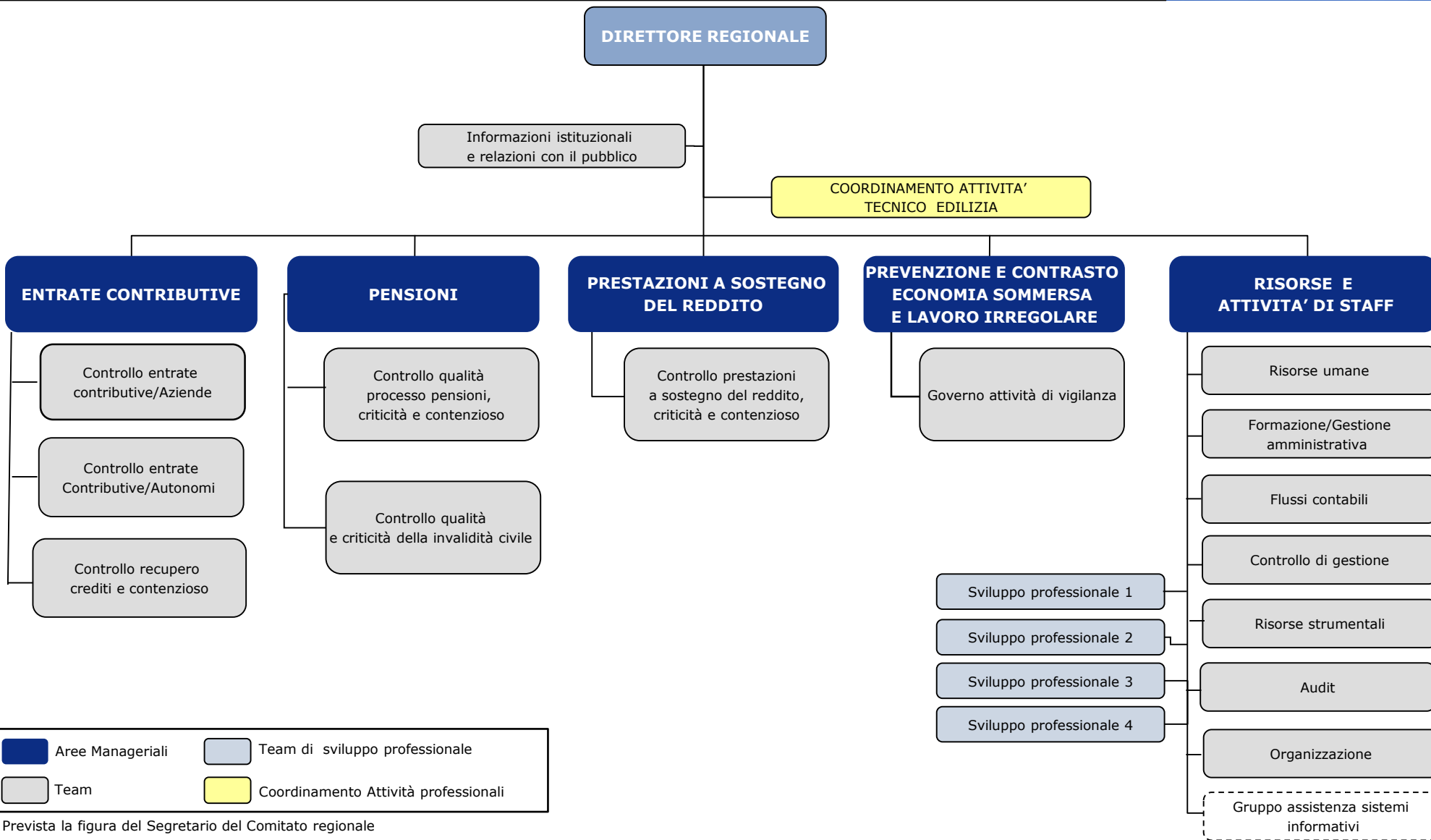
▪ Prevista la figura del Segretario del Comitato regionale

## Direzione regionale (complessità B)

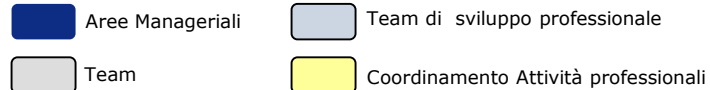
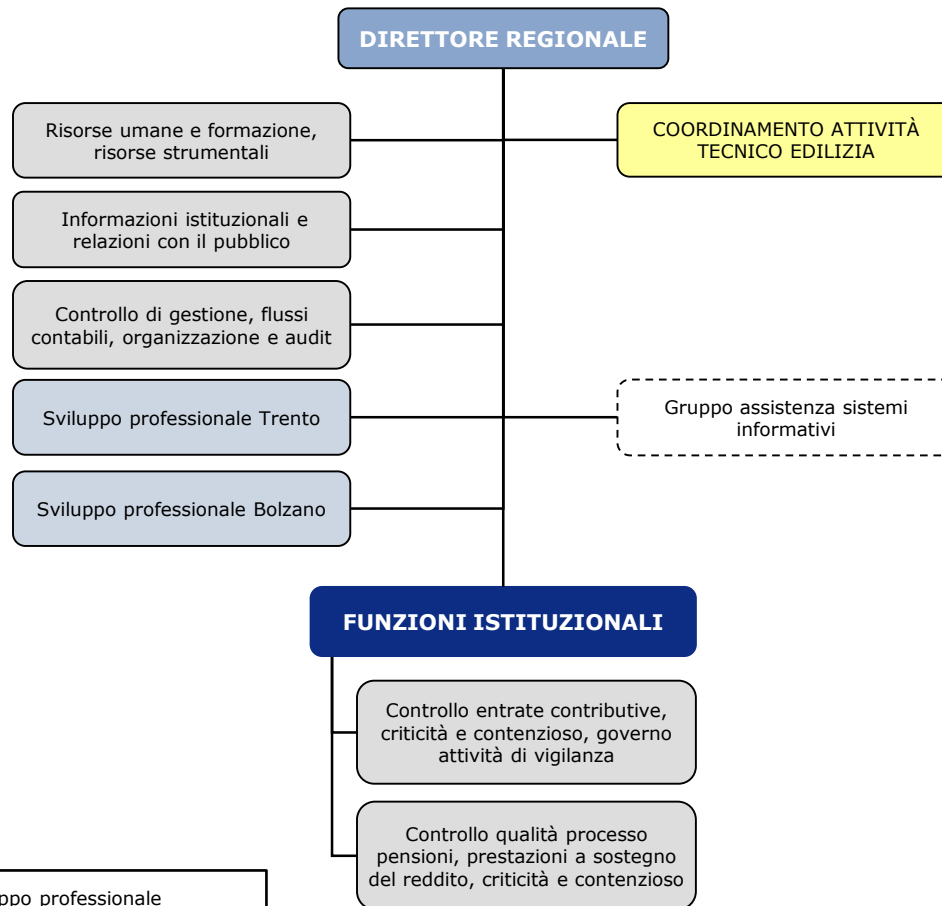


▪ Modifiche apportate il 26/11/2010 e l'11/01/2011

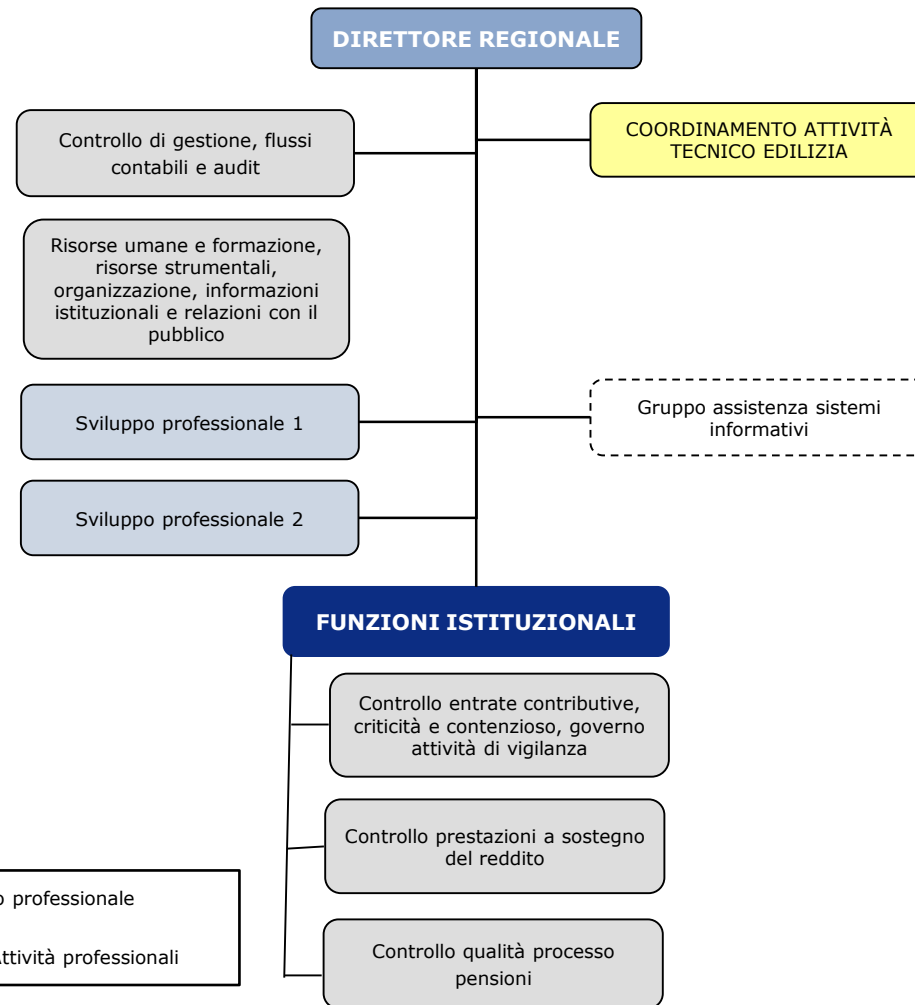








- Prevista la figura del Segretario del Comitato regionale



▪ Prevista la figura del Segretario del Comitato regionale

